

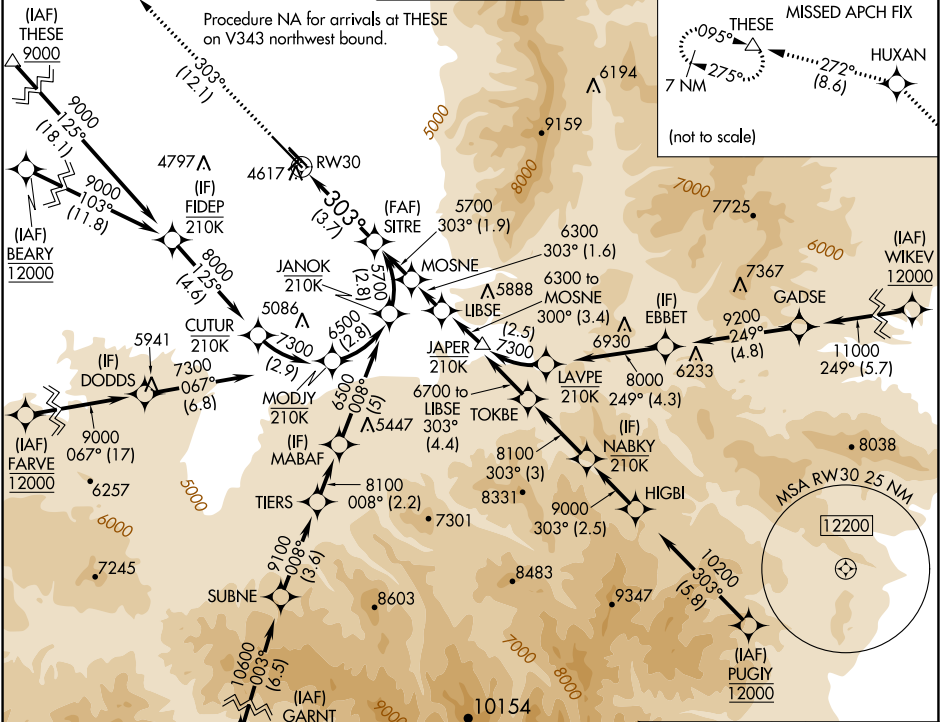
APP CRS	Rwy Idg	<b>8994</b>
<b>303°</b>	TDZE	<b>4462</b>
	Apt Elev	<b>4473</b>

# RNAV (RNP) Z RWY 30

## BOZEMAN YELLOWSTONE INTL (BZN)

RNP AR APCH - GPS.		MISSED APPROACH: Climb to 10000 on track 303° to HUXAN and on track 272° to THESE and hold, continue climb-in-hold to 10000.	
For uncompensated Baro-VNAV systems, procedure NA below -27°C or above 54°C. When local altimeter setting not received, procedure NA.			

ATIS <b>135.425</b>	BIG SKY APP CON ★ <b>118.975 226.675</b>	BOZEMAN TOWER ★ <b>118.2 (CTAF) 0</b>	GND CON <b>121.8</b>	UNICOM <b>122.95</b>
------------------------	---	--	-------------------------	-------------------------



NW-1, 28 NOV 2024 to 26 DEC 2024

NW-1, 28 NOV 2024 to 26 DEC 2024

ELEV	<b>4473</b>	TDZE	<b>4462</b>
10000	HUXAN	tr 272°	THESE
↑	☆		△
tr 303°			
See planview for multiple IF locations.			
RW30		SITRE 5700	
GP 3.00°		TCH 45	
CATEGORY	A	B	C
RNP 0.11 DA		4806-1	344 (400-1)
RNP 0.30 DA		4885-1¼	423 (500-1¼)
<b>AUTHORIZATION REQUIRED</b>			

