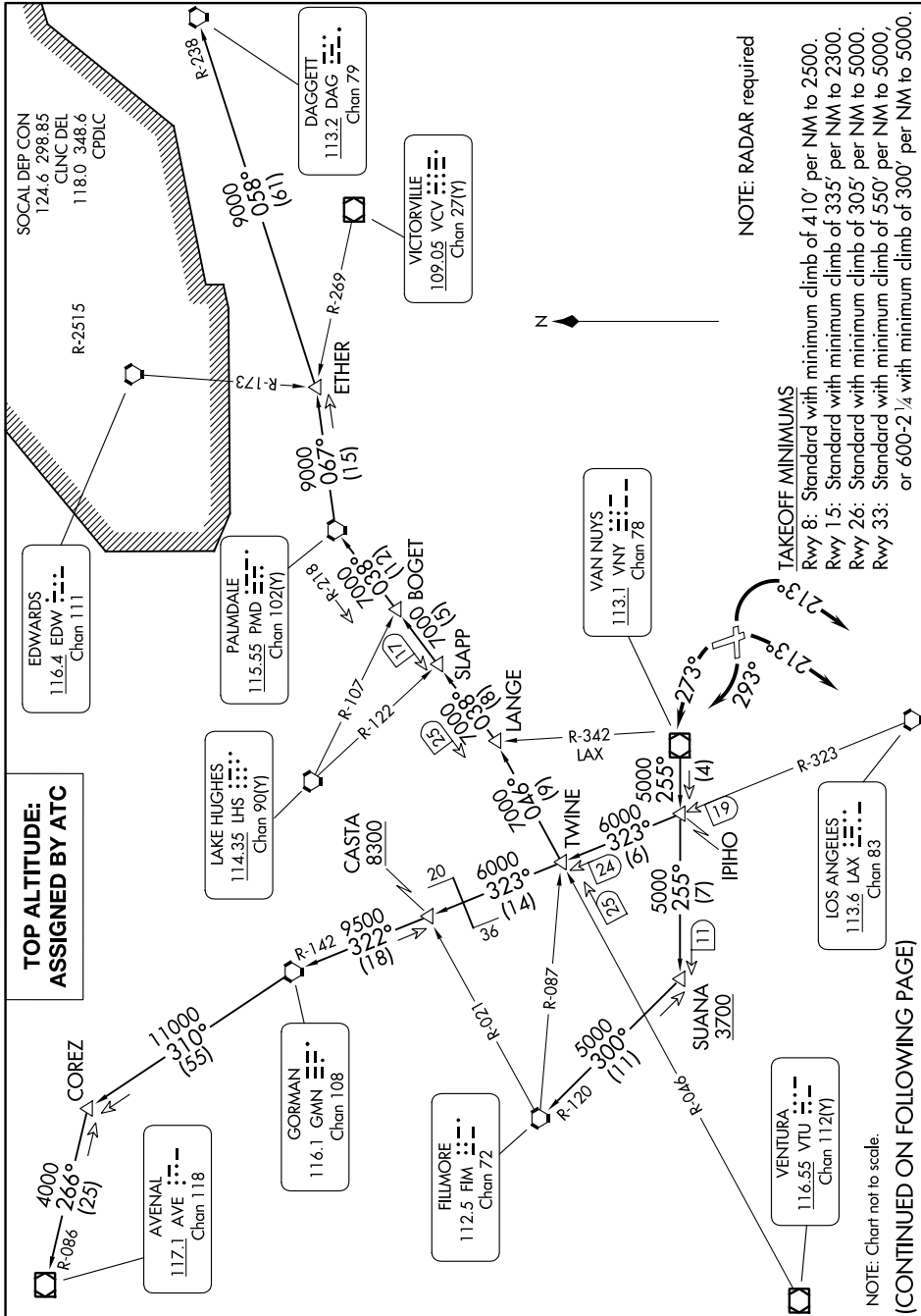


# VAN NUYS THREE DEPARTURE

AL-67 (FAA)

BOB HOPE (BUR)  
BURBANK, CALIFORNIA

SW-3, 28 NOV 2024 to 26 DEC 2024



NOTE: RADAR required

### TAKEOFF MINIMUMS

- Rwy 8: Standard with minimum climb of 410' per NM to 2500.
- Rwy 15: Standard with minimum climb of 335' per NM to 2300.
- Rwy 26: Standard with minimum climb of 305' per NM to 5000.
- Rwy 33: Standard with minimum climb of 550' per NM to 5000, or 600-2 1/4 with minimum climb of 300' per NM to 5000.

NOTE: Chart not to scale.

(CONTINUED ON FOLLOWING PAGE)

# VAN NUYS THREE DEPARTURE

(VNY3.VNY) 26MAY16

BURBANK, CALIFORNIA  
BOB HOPE (BUR)

SW-3, 28 NOV 2024 to 26 DEC 2024