

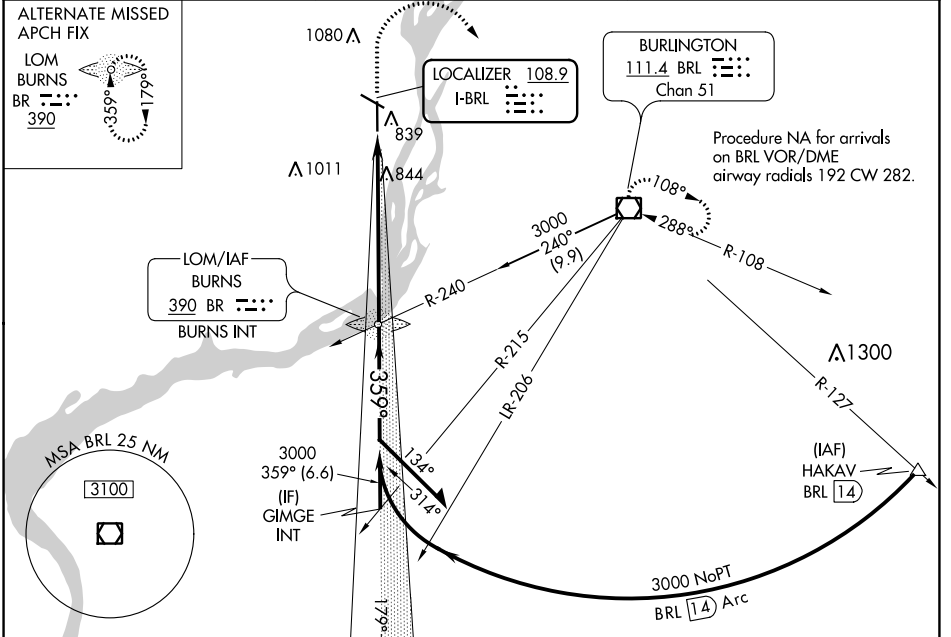
LOC I-BRL <b>108.9</b>	APP CRS <b>359°</b>	Rwy Idg TDZE Apt Elev	<b>6102</b> <b>694</b> <b>698</b>
---------------------------	------------------------	-----------------------------	---

# ILS or LOC RWY 36

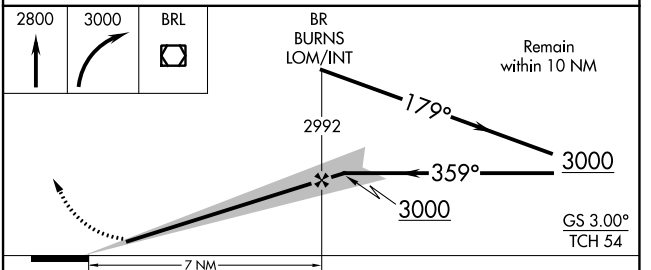
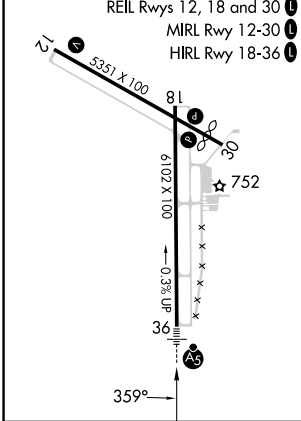
SOUTHEAST IOWA RGNL (B.R.L)

<p>NA</p> <p>MALSR</p>	<p>MISSED APPROACH: Climb to 2800 then climbing right turn to 3000 direct BRL VOR/DME and hold.</p>
------------------------	---

ASOS <b>118.025</b>	CHICAGO CENTER <b>135.6 370.95</b>	UNICOM <b>123.0 (CTAF)</b>
------------------------	---------------------------------------	-------------------------------



ELEV 698	D TDZE 694
----------	------------



CATEGORY	A	B	C	D
S-ILS 36	894-1/2 200 (200-1/2)			
S-LOC 36	1140-1/2 446 (500-1/2)	1140-7/8 446 (500-7/8)	1140-1 446 (500-1)	1140-1 446 (500-1)
CIRCLING	1180-1 482 (500-1)	1380-2 682 (700-2)	1380-2 1/4 682 (700-2 1/4)	1380-2 1/4 682 (700-2 1/4)

NC-3, 28 NOV 2024 to 26 DEC 2024

NC-3, 28 NOV 2024 to 26 DEC 2024