

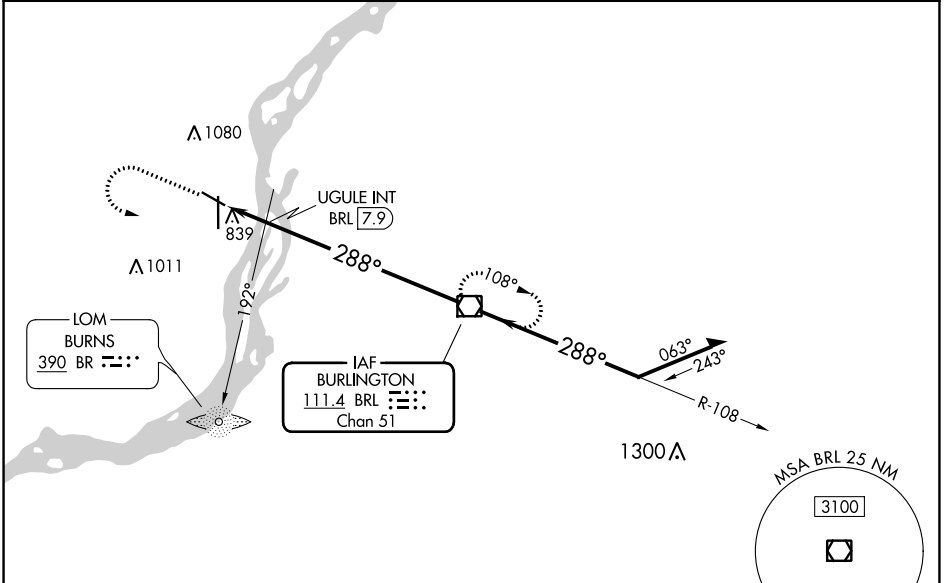
VOR/DME BRL 111.4 Chan 51	APP CRS 288°	Rwy Idg TDZE Apt Elev	4850 697 698
--	------------------------	-----------------------------	---

VOR RWY 30
SOUTHEAST IOWA RGNL (B.R.L.)

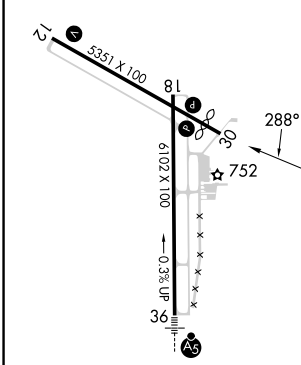
⚠ Rwy 30 helicopter visibility reduction below 3/4 SM NA.

MISSED APPROACH: Climb to 2000 then climbing left turn to 3000 direct BRL VOR/DME and hold.

ASOS 118.025	CHICAGO CENTER 135.6 370.95	UNICOM 123.0 (CTAF) 📻
------------------------	---------------------------------------	--



ELEV 698	D	TDZE 697
----------	----------	----------



VGSI and descent angles not coincident (VGSI Angle 3.00/TCH 30).
Remain within 10 NM

2000	3000	BRL
↑	↶	📻
UGULE INT BRL 7.9		
BRL 8.5	↘ 2.98° TCH 45	↘ 108°
BRL 9.6	↘ 288°	↘ 288°
1.2	0.5 NM	7.9 NM

MIRL Rwy 12-30 **📻**
HIRL Rwy 18-36 **📻**
REIL Rwys 12, 18 and 30 **📻**

FAF to MAP 9.6 NM

Knots	60	90	120	150	180
Min:Sec	9:36	6:24	4:48	3:50	3:12

CATEGORY	A	B	C	D
S-30	1280-1	583 (600-1)	1280-1 ³ / ₄ 583 (600-1 ³ / ₄)	NA
C CIRCLING	1280-1	582 (600-1)	1380-2 682 (700-2)	NA
UGULE FIX MINIMUMS				
S-30	1100-1	403 (500-1)	1100-1 ¹ / ₈ 403 (500-1 ¹ / ₈)	NA
C CIRCLING	1180-1	482 (500-1)	1380-2 682 (700-2)	NA

NC-3, 28 NOV 2024 to 26 DEC 2024

NC-3, 28 NOV 2024 to 26 DEC 2024