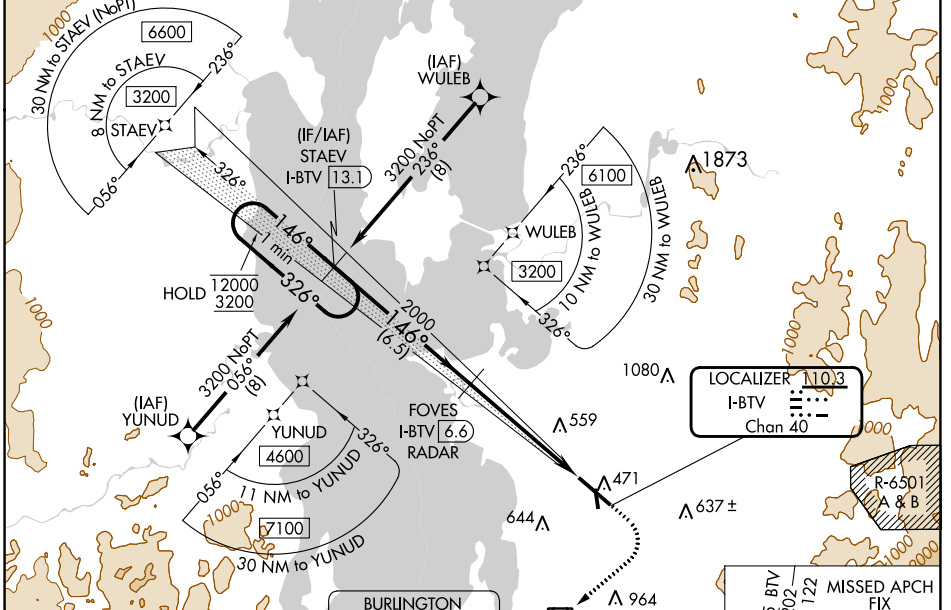


LOC/DME I-BTV <b>110.3</b> Chan <b>40</b>	APP CRS <b>146°</b>	Rwy ldg TDZE <b>7820</b> <b>326</b>	Apt Elev <b>335</b>
---	------------------------	---	------------------------

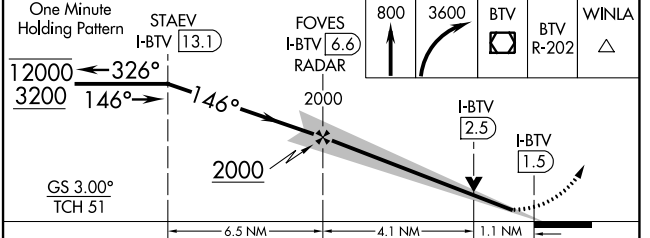
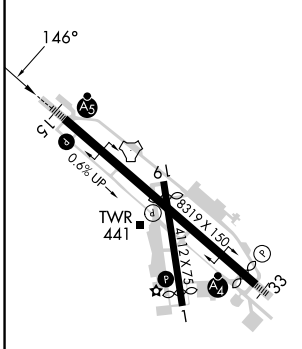
# ILS or LOC RWY 15

PATRICK LEAHY BURLINGTON INTL (BTV)

RNP APCH - GPS. Aircraft not GPS equipped - RADAR required. Cat E aircraft - RADAR required.		MALSR MISSED APPROACH: Climb to 800 then climbing right turn to 3600 direct BTV VOR/DME and on BTV VOR/DME R-202 to WINLA INT/BTV 6.4 DME and hold, continue climb-in-hold to 3600.		
<p>⚠ Rwy 15 helicopter visibility reduction below RVR 4000 NA. For inop ALS, increase S-LOC 15 all Cats visibility to RVR 5500.</p> <p>❄ -10°C Inop table does not apply to S-ILS 15.</p>				
ATIS <b>123.8 269.9</b>	BURLINGTON APP CON * <b>121.1 278.8</b>	BURLINGTON TOWER * <b>118.3 (CTAF) 257.8</b>	GND CON <b>126.3 348.6</b>	CLNC DEL <b>119.15</b>
		UNICOM <b>122.95</b>		



ELEV 335	<b>D</b>	TDZE 326
----------	----------	----------



CATEGORY	A	B	C	D	E
S-ILS 15	576/40 250 (300-¾)				
S-LOC 15	700/40 374 (400-¾)				
<b>C</b> CIRCLING	840-1 505 (600-1)	860-1 525 (600-1)	1220-2¾ 885 (900-2¾)	1380-3 1045 (1100-3)	1400-3 1065 (1100-3)

MIRL Rwy 1-19 <b>L</b>					
HIRL Rwy 15-33 <b>L</b>					
FAF to MAP 5.2 NM					
Knots	60	90	120	150	180
Min:Sec	5:12	3:28	2:36	2:05	1:44

NE-1, 28 NOV 2024 to 26 DEC 2024

NE-1, 28 NOV 2024 to 26 DEC 2024