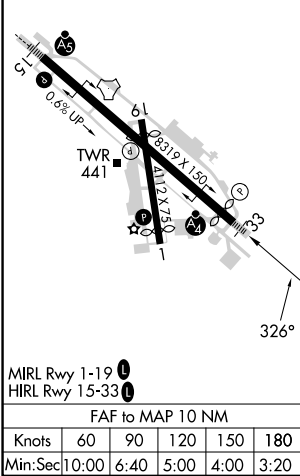
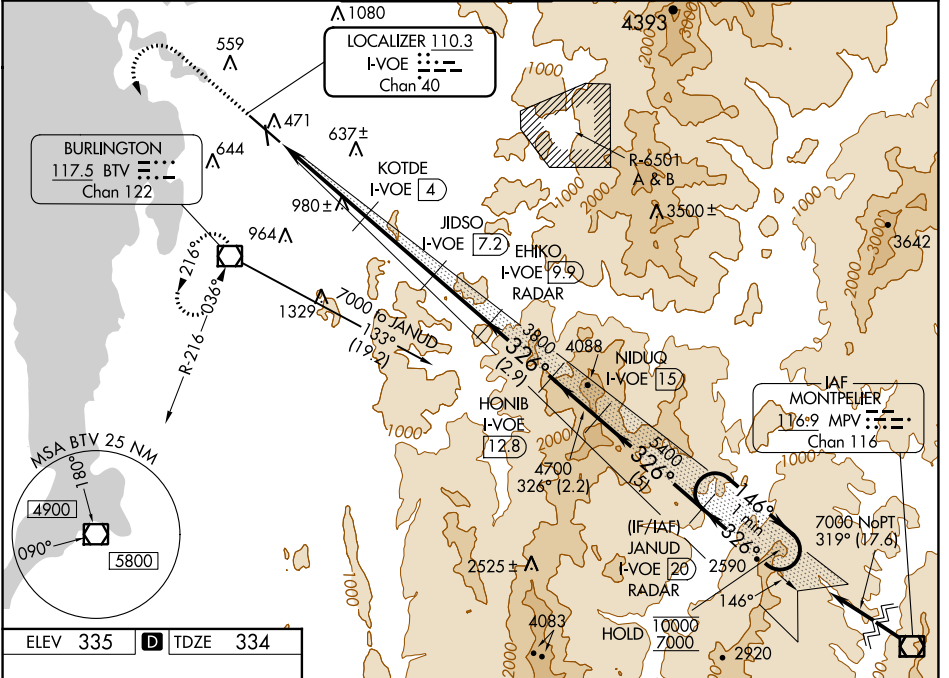


LOC/DME I-VOE <b>110.3</b> Chan <b>40</b>	APP CRS <b>326°</b>	Rwy ldg <b>7819</b> TDZE <b>334</b> Apt Elev <b>335</b>
-------------------------------------------------	------------------------	---------------------------------------------------------------

# ILS or LOC RWY 33

PATRICK LEAHY BURLINGTON INTL (BTV)

DME or RADAR required.		MISSED APPROACH: Climb to 1200 then climbing left turn to 3000 direct BTV VOR/DME and hold, continue climb-in-hold to 3000. (TACAN aircraft climb to 6000 on heading 326° for RADAR vectors. RADAR required).			
<p><b>⚠</b> Circling Rwy 1 NA at night. Autopilot coupled approach NA. Rwy 33 helicopter visibility reduction below RVR 4000 NA. For inop ALS, increase S-ILS-33 all Cats visibility to RVR 4500.</p> <p><b>❄</b> -10°C Inop table does not apply to S-LOC-33 Cats C, D and E.</p>		<p><b>MALSF</b> </p>			
ATIS <b>123.8 269.9</b>	BURLINGTON APP CON * <b>121.1 278.8</b>	BURLINGTON TOWER * <b>118.3 (CTAF) 257.8</b>	GND CON <b>126.3 348.6</b>	CLNC DEL <b>119.15</b>	UNICOM <b>122.95</b>



ELEV 335	<b>D</b>	TDZE 334				
<p>1200 3000 BTV</p> <p>One Minute Holding Pattern</p>						
I-VOE DME ANTENNA	KOTDE I-VOE	JIDSO I-VOE	EHIKO I-VOE	HONIB I-VOE	NIDUQ I-VOE	JANUD I-VOE
0.2	4	7.2	9.9	12.8	15	20
0.2	1800	2900	3800	4700	5400	10000
0.2	2.3	1.7 NM	3.2 NM	2.7 NM	2.9 NM	2.2 NM
0.2	2.3	1.7 NM	3.2 NM	2.7 NM	2.9 NM	2.2 NM

CATEGORY	A	B	C	D	E
S-ILS 33	608/40		274 (300-¾)		
S-LOC 33	1240/55	906 (1000-1)	1240-2½	906 (1000-2½)	
<b>C</b> CIRCLING	1240-1¼	905 (1000-1¼)	1240-2¾	1380-3	1400-3
			905 (1000-2¾)	1045 (1100-3)	1065 (1100-3)

NE-1, 28 NOV 2024 to 26 DEC 2024

NE-1, 28 NOV 2024 to 26 DEC 2024