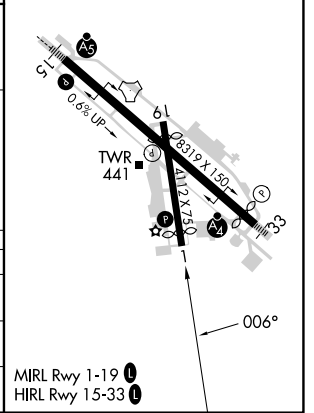
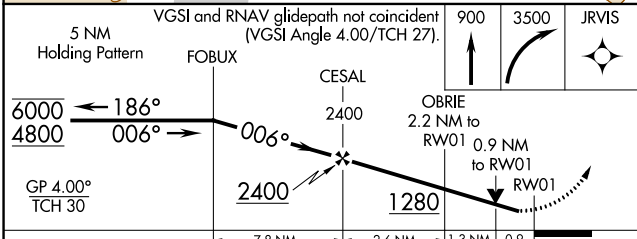
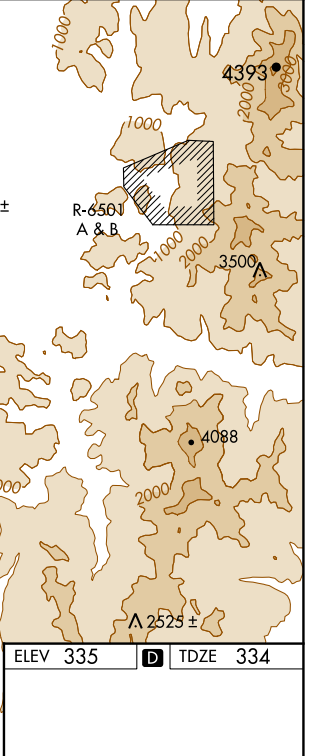
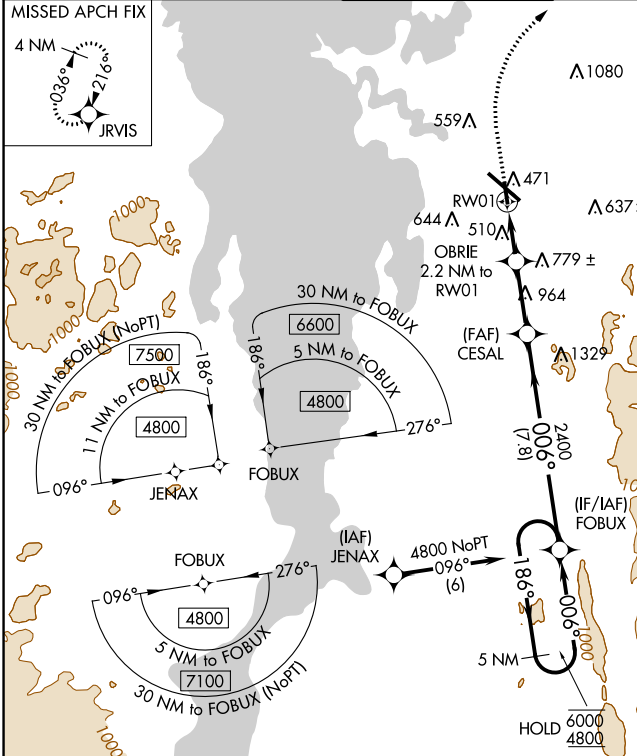


WAAS CH <b>58044</b> <b>W01A</b>	APP CRS <b>006°</b>	Rwy Idg TDZE <b>334</b> Apt Elev <b>335</b>	<b>3386</b> <b>334</b> <b>335</b>
--	------------------------	---	---

# RNAV (GPS) RWY 1

PATRICK LEAHY BURLINGTON INTL (BTV)

RNP APCH - GPS.		MISSED APPROACH: Climb to 900 then climbing right turn to 3500 direct JRVIS and hold, continue climb-in-hold to 3500.	
-10°C Rwy 1 helicopter visibility reduction below 3/4 SM NA.			
ATIS <b>123.8 269.9</b>	BURLINGTON APP CON * <b>121.1 278.8</b>	BURLINGTON TOWER * <b>118.3 (CTAF) 0 257.8</b>	GND CON <b>126.3 348.6</b>
		CINC DEL <b>119.15</b>	UNICOM <b>122.95</b>



CATEGORY	A	B	C	D
LPV DA	661-1	327 (400-1)		NA
LNAV MDA	760-1	426 (500-1)		NA
CIRCLING	840-1 505 (600-1)	860-1 525 (600-1)		NA

NE-1, 28 NOV 2024 to 26 DEC 2024

NE-1, 28 NOV 2024 to 26 DEC 2024