

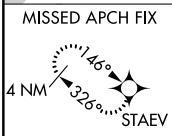
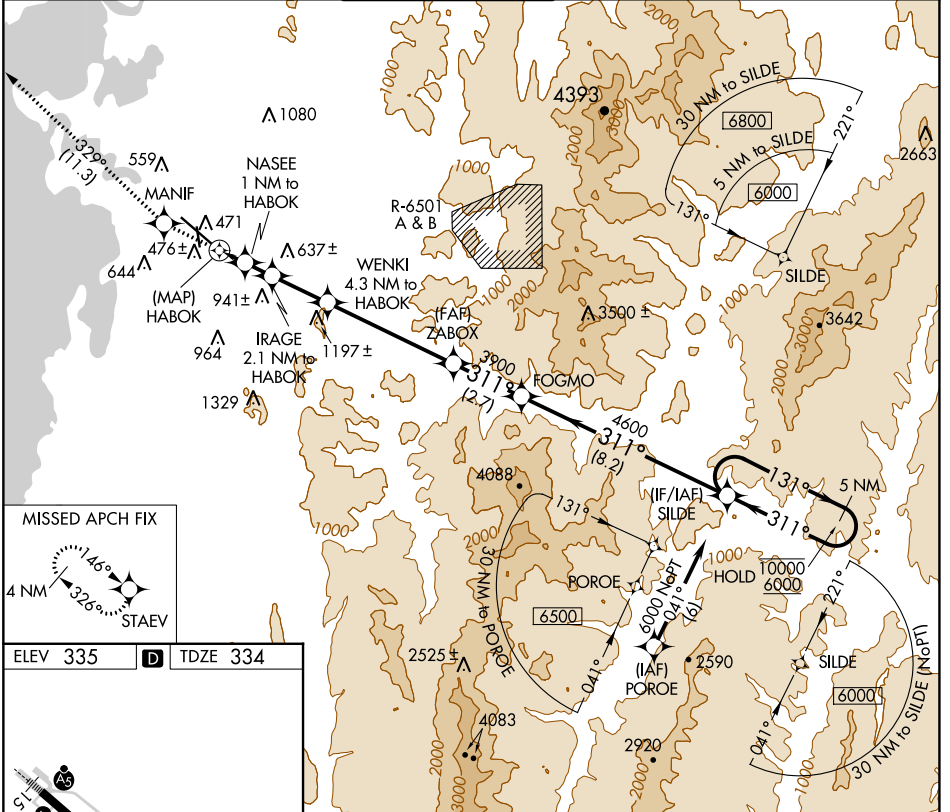
APP CRS	Rwy Idg	<b>7819</b>
<b>311°</b>	TDZE	<b>334</b>
	Apt Elev	<b>335</b>

# RNAV (GPS) Y RWY 33

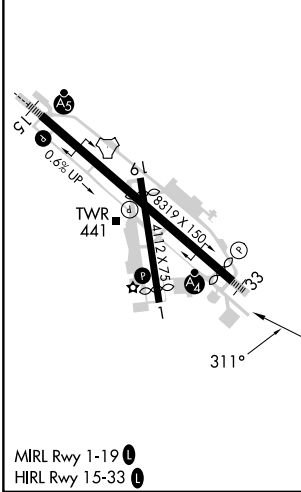
PATRICK LEAHY BURLINGTON INTL (BTV)

RNP APCH.	<p>⚠ Circling Rwy 1 NA at night. Rwy 33 helicopter visibility reduction below 3/4 SM NA. For inop ALS, increase LNAV Cat C visibility to RVR 6000.</p>	MALSF	<p>MISSED APPROACH: Climb to 3000 direct MANIF and on track 329° to STAEV and hold.</p>
-----------	--	-------	---

ATIS	BURLINGTON APP CON *	BURLINGTON TOWER *	GND CON	CLNC DEL	UNICOM
<b>123.8 269.9</b>	<b>121.1 278.8</b>	<b>118.3 (CTAF) 0 257.8</b>	<b>126.3 348.6</b>	<b>119.15</b>	<b>122.95</b>



ELEV 335	<b>D</b>	TDZE 334
----------	----------	----------



3000	MANIF	tr 329°	STAEV	WENKI 4.3 NM to HABOK	ZABOX	FOGMO	SILDE	5 NM Holding Pattern
			IRAGE 2.1 NM to HABOK					
	HABOK		NASEE 1 NM to HABOK					
			TCH 55	940	1320	2120	3900	4600
								311°
								131°
								6000
								10000
								6000
								6000
								6000

0.5	1 NM	1.1 NM	2.2 NM	5 NM	2.7 NM	8.2 NM
CATEGORY	A	B	C	D	E	
LNAV MDA	740/40	406 (500-3/4)	740/50 406 (500-1)	740/60	406 (500-1 1/4)	
<b>C</b> CIRCLING	840-1 505 (600-1)	860-1 525 (600-1)	1200-2 1/2 865 (900-1 1/2)	1380-3 1045 (1100-3)	1500-3 1165 (1200-3)	

NE-1, 28 NOV 2024 to 26 DEC 2024

NE-1, 28 NOV 2024 to 26 DEC 2024