

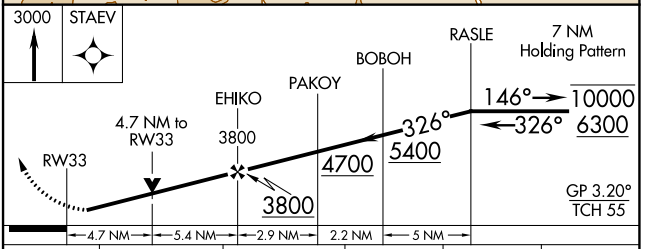
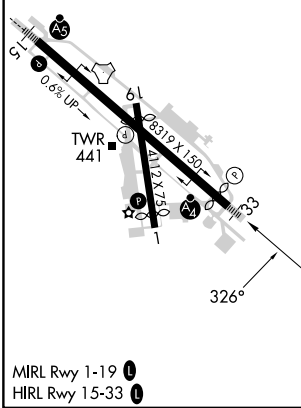
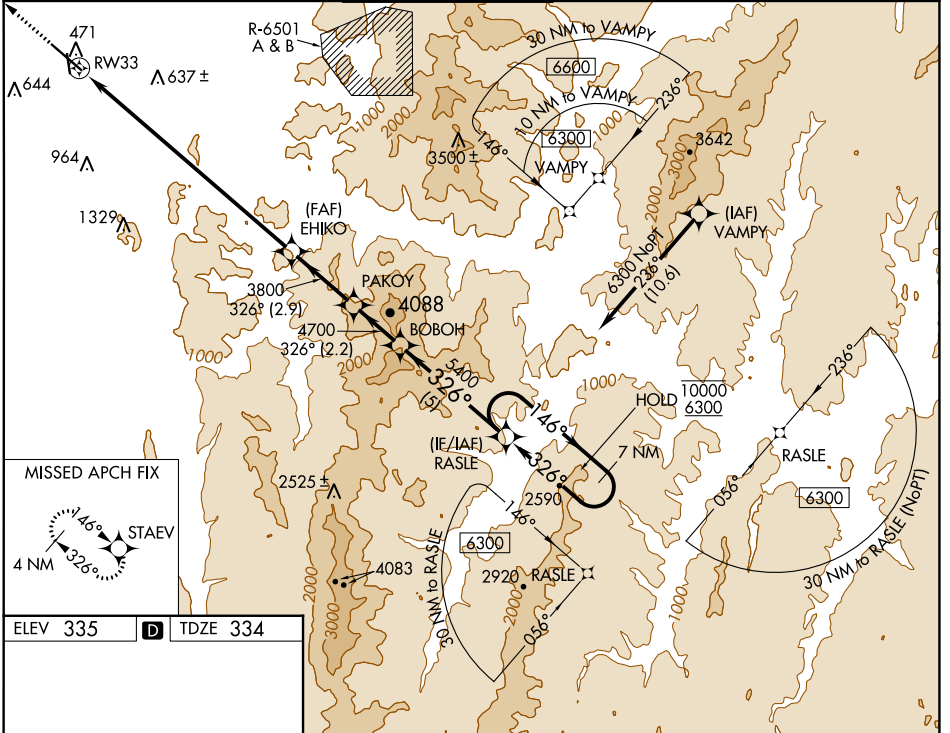
WAAS CH <b>65812</b> <b>W33A</b>	APP CRS <b>326°</b>	Rwy Idg <b>7819</b> TDZE <b>334</b> Apt Elev <b>335</b>
--	------------------------	---

# RNAV (GPS) Z RWY 33

PATRICK LEAHY BURLINGTON INTL (BTV)

RNP APCH - GPS.	MALSF	MISSED APPROACH: Climb to 3000 direct STAEV and hold.
<p>Rwy 33 helicopter visibility reduction below RVR 4000 NA. Inop table does not apply. For uncompensated Baro-VNAV systems, LNAV/VNAV NA below -25°C or above 37°C.</p>		

ATIS <b>123.8 269.9</b>	BURLINGTON APP CON * <b>121.1 278.8</b>	BURLINGTON TOWER * <b>118.3 (CTAF) 257.8</b>	GND CON <b>126.3 348.6</b>	CLNC DEL <b>119.15</b>	UNICOM <b>122.95</b>
----------------------------	--	---	-------------------------------	---------------------------	-------------------------



CATEGORY	A	B	C	D	E
LPV DA		584/40	250 (300-¾)		
LNAV/VNAV DA		1782-5	1448 (1500-5)		
LNAV MDA	2000-1¼	1666 (1700-1¼)		2000-3	1666 (1700-3)

NE-1, 28 NOV 2024 to 26 DEC 2024

NE-1, 28 NOV 2024 to 26 DEC 2024