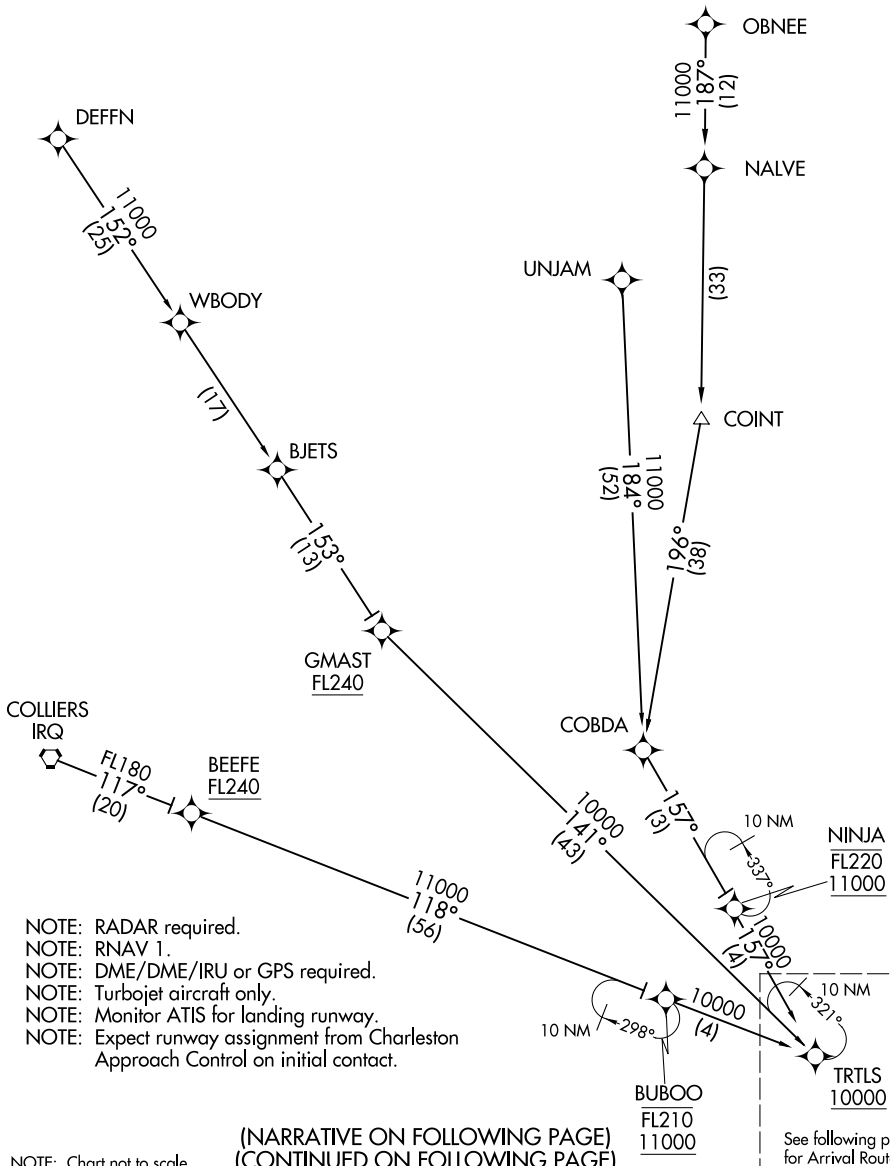


# OSPRI SEVEN ARRIVAL (RNAV) Transition Routes CHARLESTON, SOUTH CAROLINA

CHARLESTON APP CON  
120.7 306.925  
CHS D-ATIS  
124.75  
JZI AWOS-3  
123.775

COLLIERS TRANSITION (IRQ.OSPRI7)  
DEFFN TRANSITION (DEFFN.OSPRI7)  
OBNEE TRANSITION (OBNEE.OSPRI7)  
UNJAM TRANSITION (UNJAM.OSPRI7)



- NOTE: RADAR required.
- NOTE: RNAV 1.
- NOTE: DME/DME/IRU or GPS required.
- NOTE: Turbojet aircraft only.
- NOTE: Monitor ATIS for landing runway.
- NOTE: Expect runway assignment from Charleston Approach Control on initial contact.

(NARRATIVE ON FOLLOWING PAGE)  
(CONTINUED ON FOLLOWING PAGE)

NOTE: Chart not to scale.

See following page for Arrival Routes.

SE-2, 28 NOV 2024 to 26 DEC 2024

SE-2, 28 NOV 2024 to 26 DEC 2024