

AIRPORT DIAGRAM

AL-78 (FAA)

CHARLOTTE/DOUGLAS INTL (CLT)
CHARLOTTE, NORTH CAROLINA

D-ATIS ARR 121.15
 DEP 132.1
 CHARLOTTE TOWER
 118.1 (RWY 18L-36R)
 126.4 (RWY 18C-36C)
 133.35 (RWY 18R-36L)
 257.8
 GND CON
 121.8 (WEST)
 121.9 (EAST)
 348.6
 CLNC DEL
 127.15 348.6
 CPDLC
 PDC

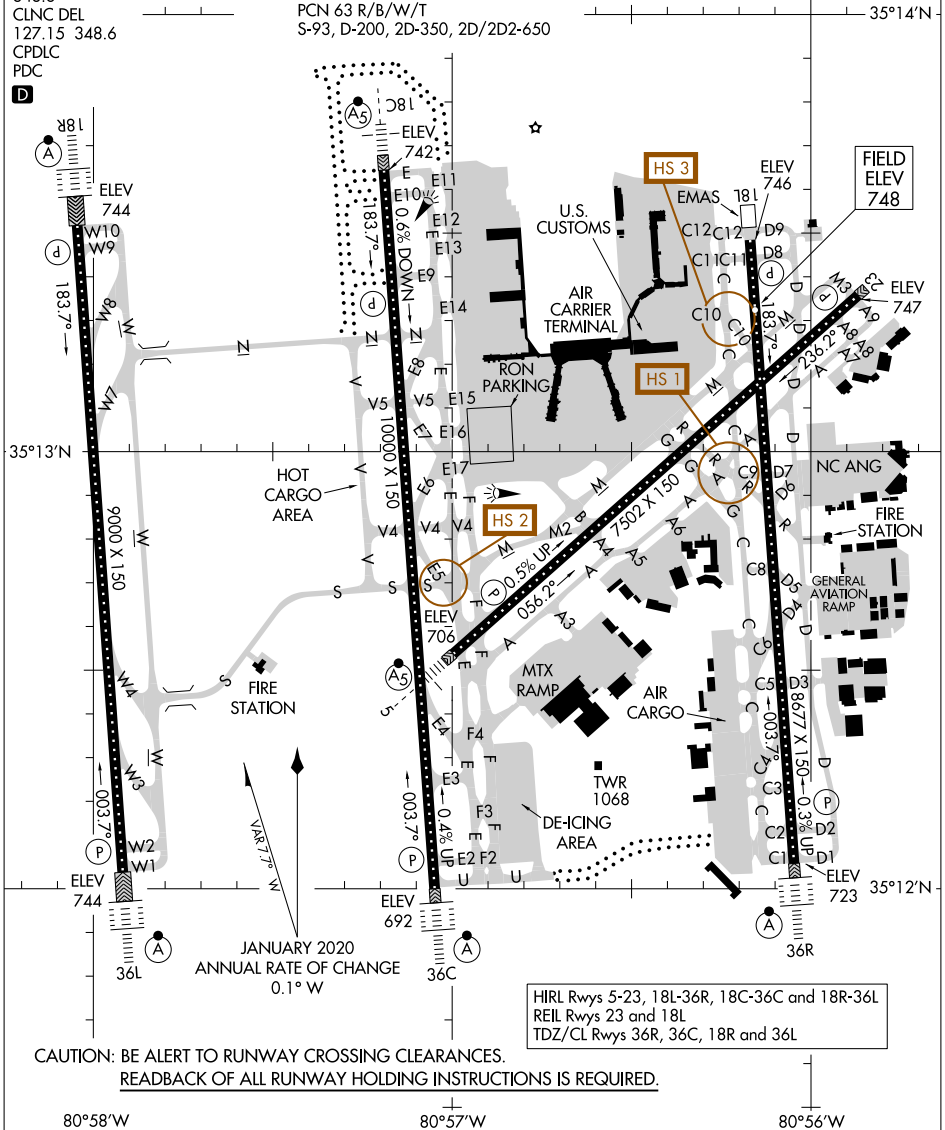
RWY 05-23
 PCN 73 R/B/W/T
 S-93, D-170, 2D-350, 2D/2D2-650
 RWY 18C-36C
 PCN 82 R/B/W/T
 S-93, D-200, 2D-350, 2D/2D2-650
 RWY 18L-36R
 PCN 68 R/B/W/T
 S-93, D-200, 2D-350, 2D/2D2-650
 RWY 18R-36L
 PCN 63 R/B/W/T
 S-93, D-200, 2D-350, 2D/2D2-650

ASDE-X in use. Operate transponders with altitude reporting mode and ADS-B (if equipped) enabled on all airport surfaces.

Runway Status Lights in operation.

SE-2, 28 NOV 2024 to 26 DEC 2024

SE-2, 28 NOV 2024 to 26 DEC 2024



HIRL Rwy 5-23, 18L-36R, 18C-36C and 18R-36L
 REIL Rwy 23 and 18L
 TDZ/CL Rwy 36R, 36C, 18R and 36L

CAUTION: BE ALERT TO RUNWAY CROSSING CLEARANCES.
 READBACK OF ALL RUNWAY HOLDING INSTRUCTIONS IS REQUIRED.

AIRPORT DIAGRAM

CHARLOTTE, NORTH CAROLINA
CHARLOTTE/DOUGLAS INTL (CLT)