

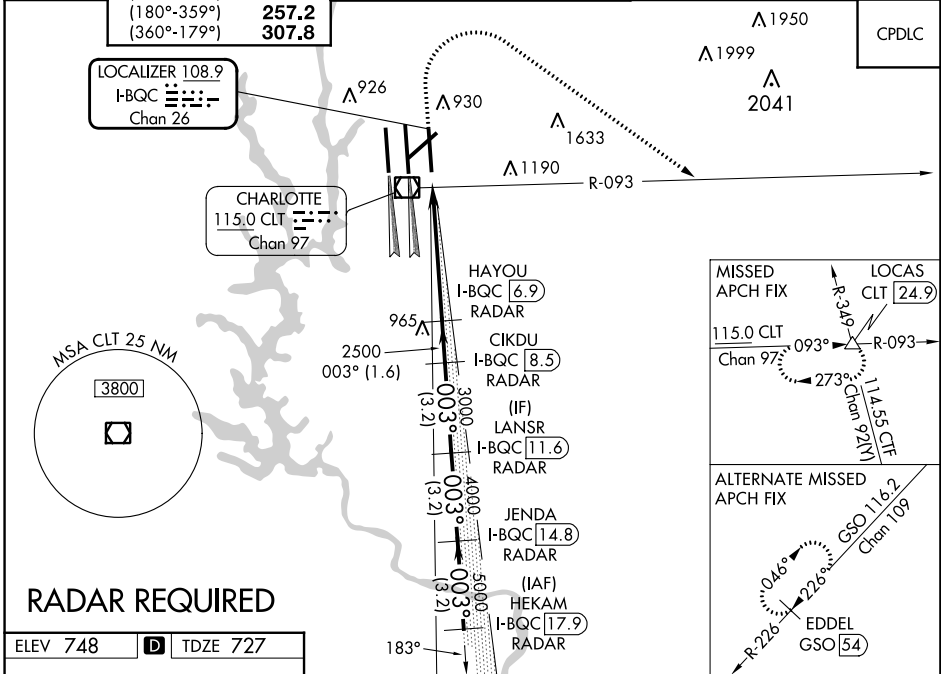
LOC/DME I-BQC <b>108.9</b> Chan 26	APP CRS <b>003°</b>	Rwy Idg TDZE Apt Elev	<b>8390</b> <b>727</b> <b>748</b>
--	------------------------	-----------------------------	---

# ILS RWY 36R (CAT II & III)

CHARLOTTE/DOUGLAS INTL (CLT)

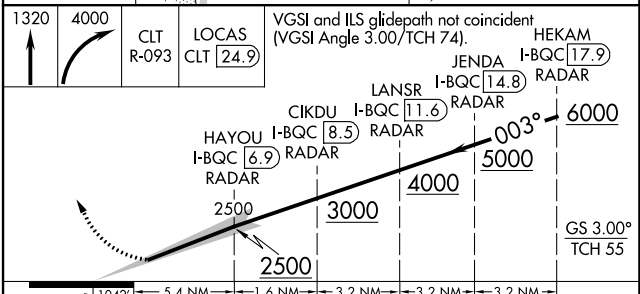
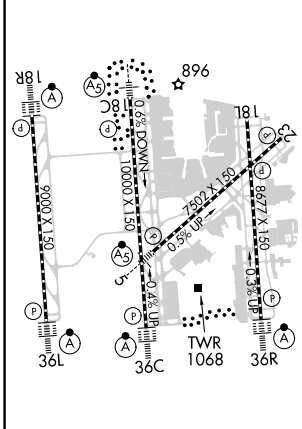
 Simultaneous approach authorized. DME or RADAR required.	 ALS-2	MISSED APPROACH: Climb to 1320 then climbing right turn to 4000 on CLT VOR/DME R-093 to LOCAS INT/24.9 DME and hold.	
		GND CON	

D-ATIS ARR <b>121.15</b> DEP <b>132.1</b>	CHARLOTTE APP CON (001°-119°) <b>128.32</b> (120°-295°) <b>120.05</b> (296°-360°) <b>134.75</b> (180°-359°) <b>257.2</b> (360°-179°) <b>307.8</b>	CHARLOTTE TOWER (Rwys 18L-36R) <b>118.1 257.8</b> (Rwy 18C-36C) <b>126.4 257.8</b> (Rwy 18R-36L) <b>133.35 257.8</b>	GND CON <b>121.8 348.6 (WEST)</b> <b>121.9 348.6 (EAST)</b>	CLNC DEL <b>127.15</b> <b>348.6</b>
---	--	---	---	---



## RADAR REQUIRED

ELEV 748	<b>D</b>	TDZE 727
----------	----------	----------



CATEGORY	A	B	C	D
S-ILS 36R	CAT II RA 119/12 100 DA 827			
S-ILS 36R	CAT IIIa RVR 06			
S-ILS 36R	CAT IIIb NA			
S-ILS 36R	CAT IIIc NA			

## CATEGORY II & III ILS SPECIAL AIRCREW & AIRCRAFT CERTIFICATION REQUIRED

SE-2, 28 NOV 2024 to 26 DEC 2024

SE-2, 28 NOV 2024 to 26 DEC 2024