

LOC I-DQG	APP CRS	Rwy Idg	10000
111.7	003°	TDZE	707
		Apt Elev	748

ILS or LOC RWY 36C

CHARLOTTE/DOUGLAS INTL (CLT)

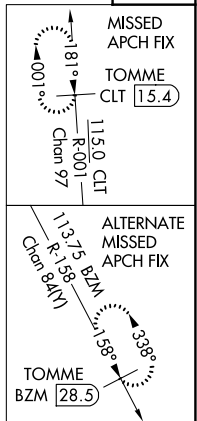
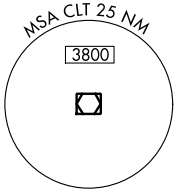
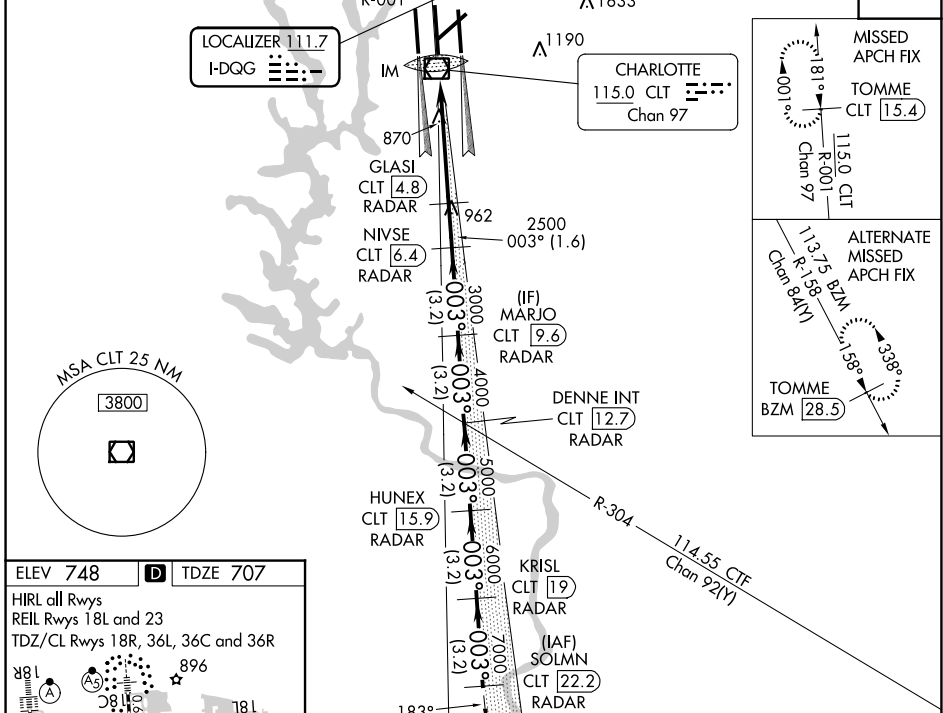
RADAR required for procedure entry. DME or RADAR required.

⚠ Circling NA at night. Simultaneous approach authorized. DQG ILS LLZ Rwy 36C unusable for rollout guidance.

ALSF-2
A

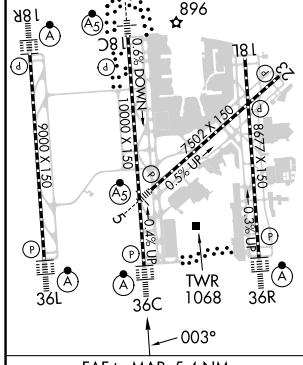
MISSED APPROACH: Climb to 3000 on CLT VOR/DME R-001 to TOMME/CLT 15.4 DME and hold.

D-ATIS	CHARLOTTE APP CON	CHARLOTTE TOWER	GND CON	CLNC DEL
ARR 121.15	(001°-119°) 128.32	(Rwys 18L-36R) 118.1 257.8	121.8 348.6 (WEST)	127.15
DEP 132.1	(120°-295°) 120.05	(Rwy 18C-36C) 126.4 257.8	121.9 348.6 (EAST)	348.6
	(296°-360°) 134.75	(Rwy 18R-36L) 133.35 257.8		
	(180°-359°) 257.2			
	(360°-179°) 307.8			



ELEV 748	D	TDZE 707
----------	----------	----------

HIRL all Rwys
REIL Rwys 18L and 23
TDZ/CL Rwys 18R, 36L, 36C and 36R



CLT R-001	TOMME CLT 15.4	DENNE INT CLT 12.7 RADAR	HUNEX CLT 19 RADAR	KRISL CLT 22.2 RADAR	SOLMN CLT 22.2
GLASI CLT 4.8 RADAR	NIVSE CLT 6.4 RADAR	MARJO CLT 9.6 RADAR	DENNE INT CLT 12.7 RADAR	HUNEX CLT 19 RADAR	KRISL CLT 19 RADAR
IM	2500	3000	4000	5000	6000
0.2	0.2 NM	1.6 NM	3.2 NM	3.2 NM	3.2 NM
3000	2500	3000	4000	5000	6000
003°	003°	003°	003°	003°	003°
8000	8000	8000	8000	8000	8000
GS 3.00°	GS 3.00°	GS 3.00°	GS 3.00°	GS 3.00°	GS 3.00°
TCH 57	TCH 57	TCH 57	TCH 57	TCH 57	TCH 57

CATEGORY	A	B	C	D
S-ILS 36C	907/18 200 (200-1/2)			
S-LOC 36C	1120/24 413 (400-1/2)			
C CIRCLING	1380-1 632 (700-1)	1500-2 1/4 752 (800-2 1/4)	1500-2 1/2 752 (800-2 1/2)	

SE-2, 28 NOV 2024 to 26 DEC 2024

SE-2, 28 NOV 2024 to 26 DEC 2024