

LOC/DME I-XUU <b>110.15</b> Chan 38(Y)	APP CRS <b>003°</b>	Rwy Idg TDZE <b>9000</b> <b>744</b> Apt Elev <b>748</b>
--	------------------------	--

# ILS or LOC RWY 36L

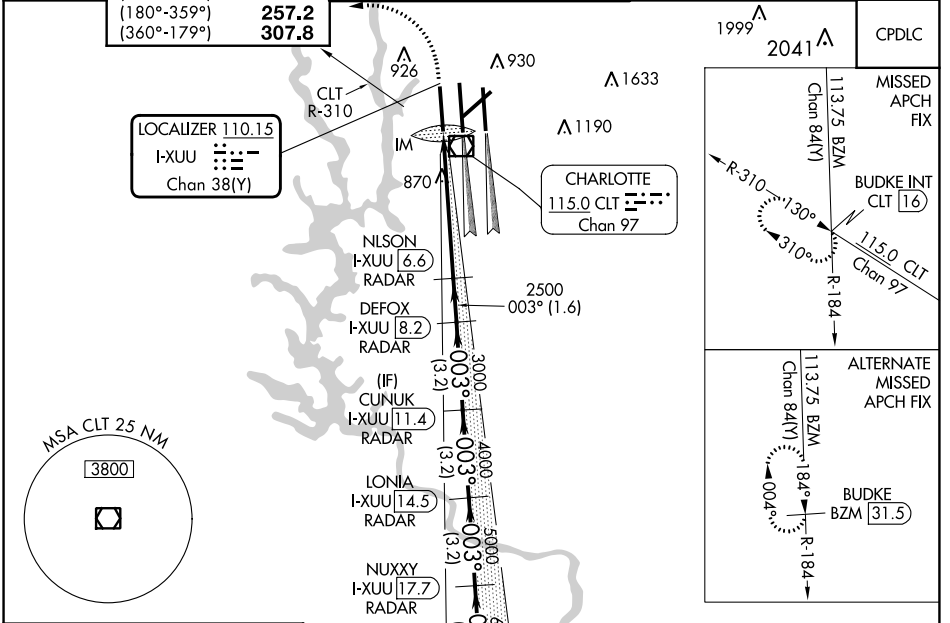
CHARLOTTE/DOUGLAS INTL (CLT)

**⚠** Circling NA at night. Simultaneous approach authorized.  
**⚠** DME or RADAR required.

ALSF-2

MISSED APPROACH: Climb to 1200 then climbing left turn to 4000 on CLT VOR/DME R-310 to BUDKE/CLT 16 DME and hold.

D-ATIS ARR <b>121.15</b> DEP <b>132.1</b>	CHARLOTTE APP CON (001°-119°) <b>128.32</b> (120°-295°) <b>120.05</b> (296°-360°) <b>134.75</b> (180°-359°) <b>257.2</b> (360°-179°) <b>307.8</b>	CHARLOTTE TOWER (Rwys 18L-36R) <b>118.1 257.8</b> (Rwy 18C-36C) <b>126.4 257.8</b> (Rwy 18R-36L) <b>133.35 257.8</b>	GND CON <b>121.8 348.6</b> (WEST) <b>121.9 348.6</b> (EAST)	CLNC DEL <b>127.15</b> <b>348.6</b>
---	--	---	---	---

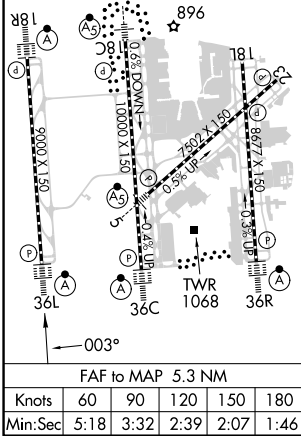


SE-2, 28 NOV 2024 to 26 DEC 2024

SE-2, 28 NOV 2024 to 26 DEC 2024

ELEV 748	<b>D</b>	TDZE 744
----------	----------	----------

HIRL all Rws  
REIL Rws 18L and 23  
TDZ/CL Rws 18R, 36L, 36C and 36R



## RADAR REQUIRED

1200	4000	CLT R-310	BUDKE INT	VGSI and ILS glidepath not coincident (VGSI Angle 3.00/TCH 70).	WELET I-XUU 20.8 RADAR
*LOC only.					
I-XUU 1.3	I-XUU 2.5	NLSN I-XUU 6.6 RADAR	DEFOX I-XUU 8.2 RADAR	CUNUK I-XUU 11.4 RADAR	LONIA I-XUU 14.5 RADAR NUXXY I-XUU 17.7 RADAR
IM	2500	3000	4000	5000	6000
0.1	1.1 NM	4.1 NM	1.6 NM	3.2 NM	3.2 NM
CATEGORY A		CATEGORY B		CATEGORY C	
S-ILS 36L 944/18 200 (200-½)					
S-LOC 36L 1180/24 436 (500-½)		1180/40 436 (500-¾)			
<b>C</b> CIRCLING 1380-1 632 (700-1)		1500-2¼ 752 (800-2¼)		1500-2½ 752 (800-2½)	