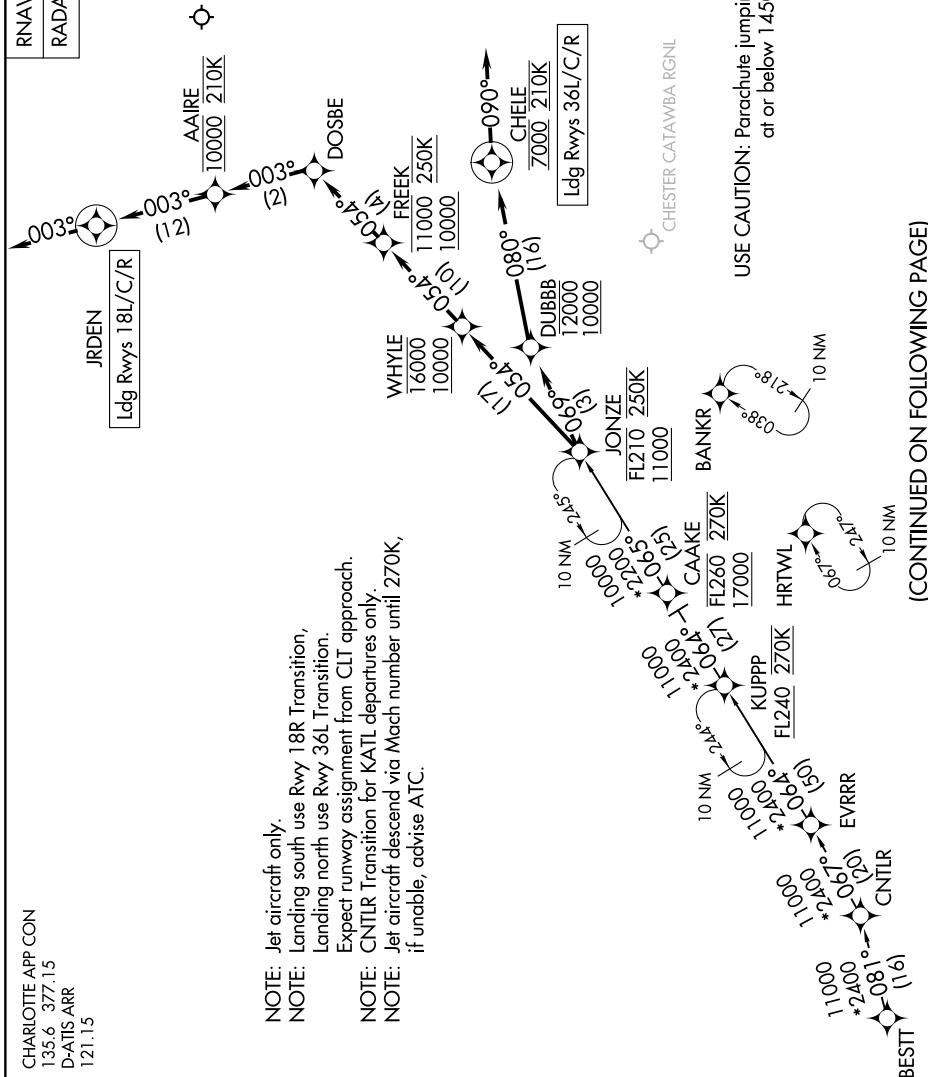


JONZE FIVE ARRIVAL (RNAV)

SE-2, 28 NOV 2024 to 26 DEC 2024

CHARLOTTE APP CON
135.6 377.15
D-ATIS ARR
121.15

RNAV 1 - DME/DME/IRU or GPS.
RADAR required.



- NOTE: Jet aircraft only.
- NOTE: Landing south use Rwy 18R Transition, Landing north use Rwy 36L Transition.
- NOTE: Expect runway assignment from CLT approach. CNLTR Transition for KATL departures only.
- NOTE: Jet aircraft descend via Mach number until 270K, if unable, advise ATC.

USE CAUTION: Parachute jumping, 3 NM radius KDCM at or below 14500 MSL.

(CONTINUED ON FOLLOWING PAGE)

NOTE: Chart not to scale.

SE-2, 28 NOV 2024 to 26 DEC 2024

JONZE FIVE ARRIVAL (RNAV)