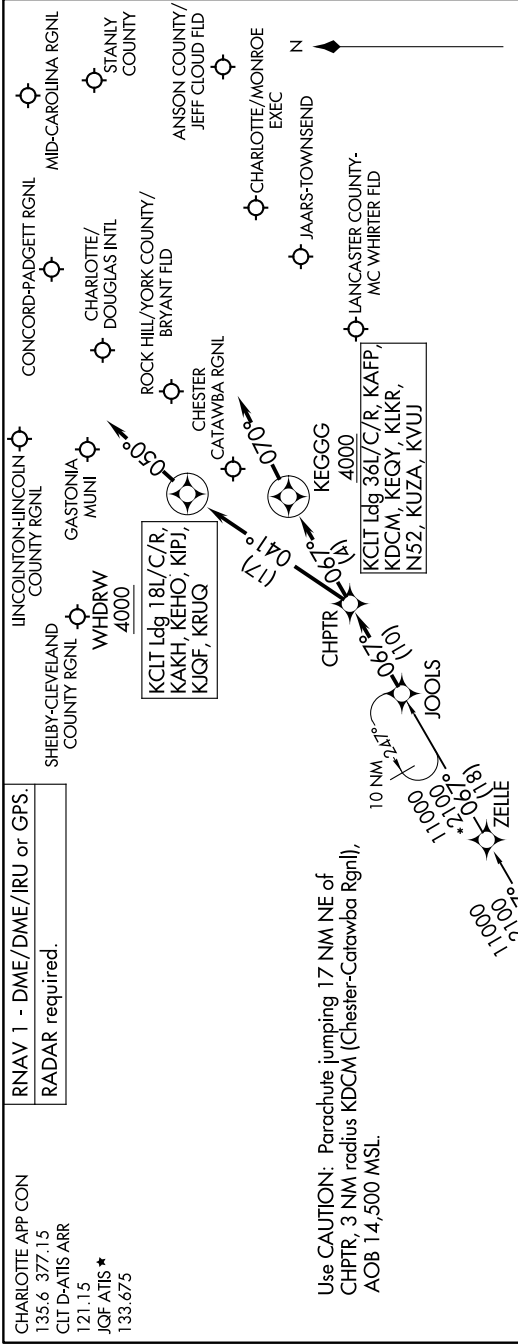


JOOLS ONE ARRIVAL (RNAV)

CHARLOTTE, NORTH CAROLINA

SE-2, 28 NOV 2024 to 26 DEC 2024



ARRIVAL ROUTE DESCRIPTION

THRSR TRANSITION (THRSR..JOOLS1)
WANSAS TRANSITION (WANSAS..JOOLS1)

KCLT: From JOOLS on track 067° to CHPTR.
 LANDING RUNWAYS 18L/C/R: From CHPTR on track 041° to cross WHDRW at or above 4000, then on track 050°. Expect RADAR vectors to final approach course.
 LANDING RUNWAYS 36L/C/R: From CHPTR on track 067° to cross KEGGG at or above 4000, then on track 070°. Expect RADAR vectors to final approach course.
 LANDING KAKH/KRUQ/KEHO/KIQF/KIPJ: From JOOLS on track 067° to CHPTR, then on track 041° to cross WHDRW at or above 4000, then on track 050°. Expect RADAR vectors to final approach course.
 LANDING KDCM/KEGY/KUZA/KAFP/N52/KVUJ/KLKR: From JOOLS on track 067° to CHPTR, then on track 067° to cross KEGGG at or above 4000, then on track 070°. Expect RADAR vectors to final approach course.

SE-2, 28 NOV 2024 to 26 DEC 2024

JOOLS ONE ARRIVAL (RNAV)

CHARLOTTE, NORTH CAROLINA

NOTE: Chart not to scale.