

KNIGHTS THREE DEPARTURE

**TOP ALTITUDE:
4000**

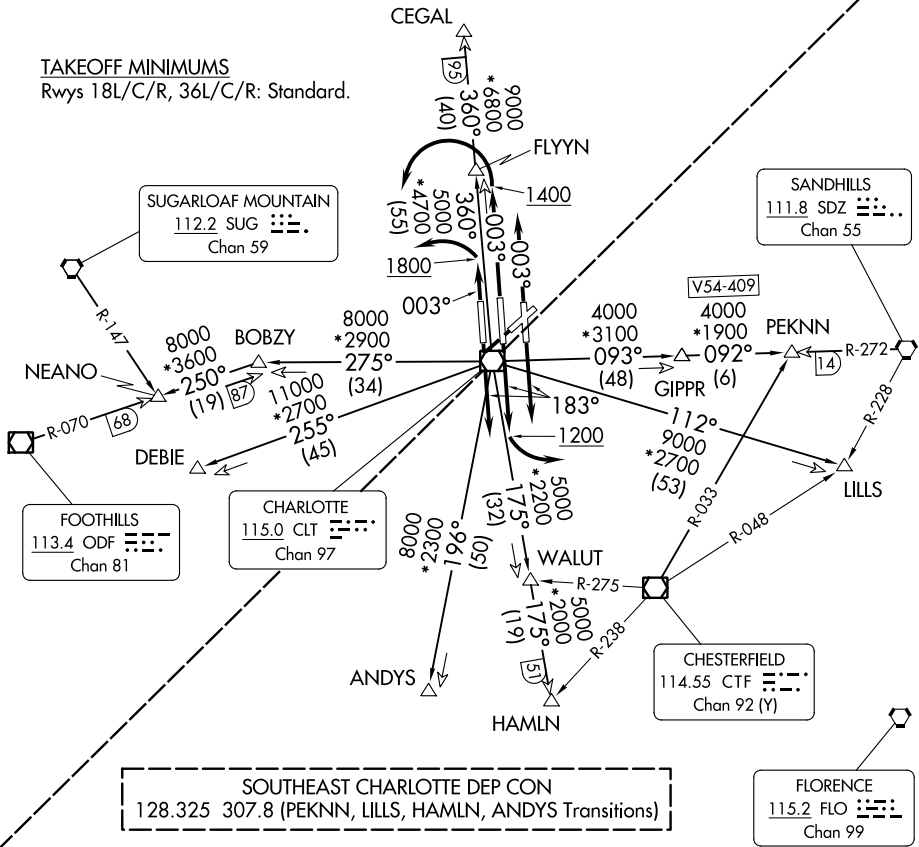
RADAR and DME required.

D-ATIS DEP
132.1
CLNC DEL
127.15 348.6
CPDLC
GND CON
121.8 348.6 (WEST)
121.9 348.6 (EAST)
CHARLOTTE TOWER
118.1 257.8 (Rwy 18L-C/R)
126.4 257.8 (Rwy 18C-36C)
133.35 257.8 (Rwy 18R-36L)

NORTHWEST CHARLOTTE DEP CON
 120.05 257.2 (DEBIE, NEANO Transitions)
 120.05 257.2 (FLYYN, CEGAL Transitions Rwys 18L/C/R)
 120.5 257.2 (FLYYN, CEGAL Transitions Rwys 36L/C/R)

TAKEOFF MINIMUMS

Rwys 18L/C/R, 36L/C/R: Standard.



SE-2, 28 NOV 2024 to 26 DEC 2024

SE-2, 28 NOV 2024 to 26 DEC 2024

- NOTE: For propeller aircraft only.
- NOTE: Turboprops: Operate in a manner that will result in best forward speed and climb rate.
- NOTE: Transponder code will be issued via PDC or Charlotte clearance delivery.

(CONTINUED ON FOLLOWING PAGE)

NOTE: Chart not to scale.

KNIGHTS THREE DEPARTURE