

WAAS CH 77500 W18A	APP CRS 183°	Rwy Idg TDZE Apt Elev	8676 748 748
--	------------------------	-----------------------------	---

RNAV (GPS) Y RWY 18L

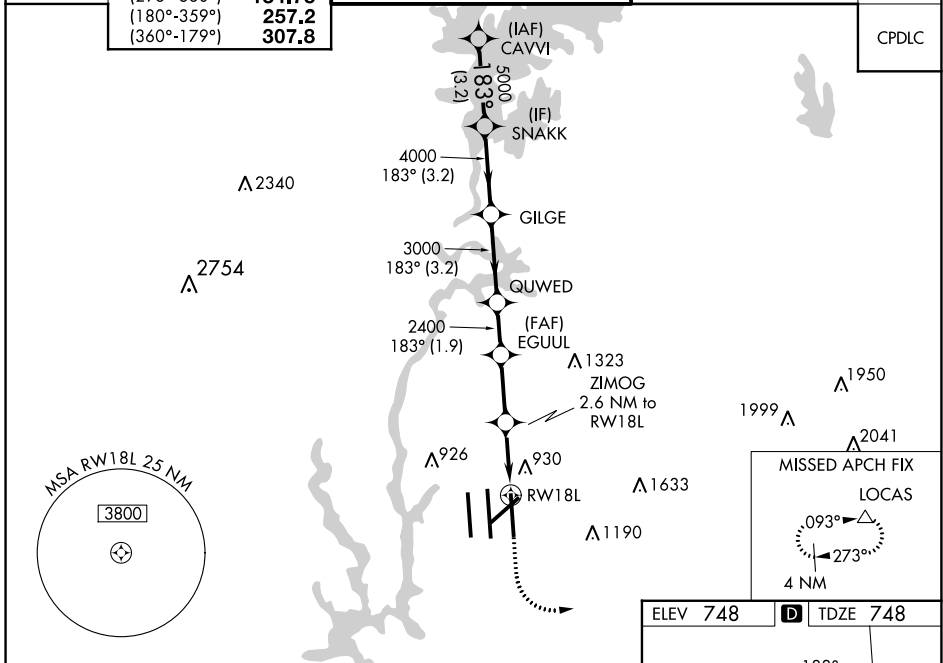
CHARLOTTE/DOUGLAS INTL (CLT)

RNP APCH.

▼ Circling NA at night. Simultaneous approach authorized. LNAV procedure NA during simultaneous operations. Use of FD or AP required during simultaneous operations.
▲ Rwy 18L helicopter visibility reduction below RVR 4000 NA. For uncompensated Baro-VNAV systems, LNAV/VNAV NA below -11°C or above 54°C.

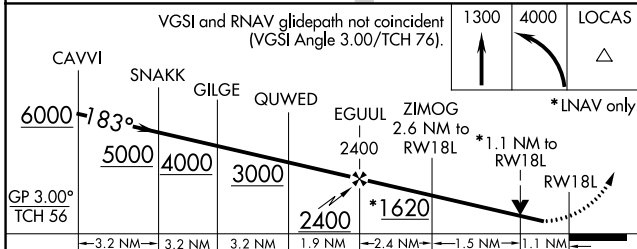
MISSED APPROACH: Climb to 1300 then climbing left turn to 4000 direct LOCAS and hold.

D-ATIS ARR 121.15 DEP 132.1	CHARLOTTE APP CON (001°-119°) 128.32 (120°-295°) 120.05 (296°-360°) 134.75 (180°-359°) 257.2 (360°-179°) 307.8	CHARLOTTE TOWER (Rwys 18L-36R) 118.1 257.8 (Rwy 18C-36C) 126.4 257.8 (Rwy 18R-36L) 133.35 257.8	GND CON 121.8 348.6 (WEST) 121.9 348.6 (EAST)	CLNC DEL 127.15 348.6
---	--	---	---	---

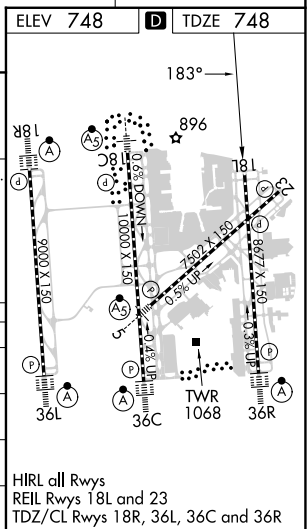


SE-2, 28 NOV 2024 to 26 DEC 2024

SE-2, 28 NOV 2024 to 26 DEC 2024



CATEGORY	A	B	C	D
LPV DA	1002/40		254 (300-¾)	
LNAV/VNAV DA	1216-1⅜		468 (500-1⅝)	
LNAV MDA	1180/55	432 (500-1)	1180-1¼	432 (500-1¼)
C CIRCLING	1380-1	632 (700-1)	1500-2¼ 752 (800-2¼)	1500-2½ 752 (800-2½)



HIRL all Rwys
REIL Rwys 18L and 23
TDZ/CL Rwys 18R, 36L, 36C and 36R