

WAAS CH <b>86200</b> <b>W36B</b>	APP CRS <b>003°</b>	Rwy Idg <b>10000</b> TDZE <b>707</b> Apt Elev <b>748</b>
--	------------------------	--

# RNAV (GPS) Y RWY 36C

CHARLOTTE/DOUGLAS INTL (CLT)

RNP APCH.

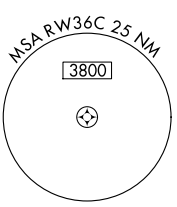
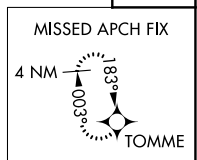
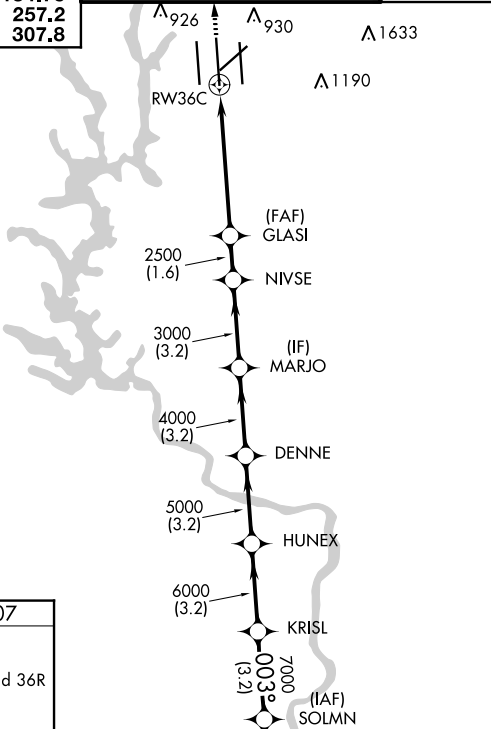
**⚠** Circling NA at night. Simultaneous approach authorized. Use of FD or AP required during simultaneous operations. For uncompensated Baro-VNAV systems, LNAV/VNAV NA below -11°C or above 54°C. LNAV procedure NA during simultaneous operations.



MISSED APPROACH:  
Climb to 3000 direct  
TOMME and hold.

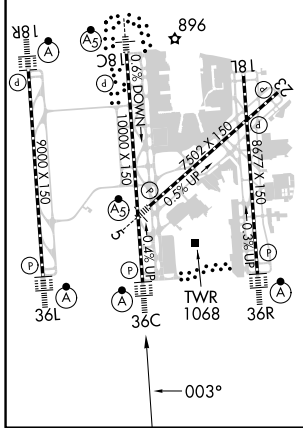
D-ATIS ARR <b>121.15</b> DEP <b>132.1</b>	CHARLOTTE APP CON (001°-119°) <b>128.32</b> (120°-295°) <b>120.05</b> (296°-360°) <b>134.75</b> (180°-359°) <b>257.2</b> (360°-179°) <b>307.8</b>	CHARLOTTE TOWER (Rwys 18L-36R) <b>118.1 257.8</b> (Rwy 18C-36C) <b>126.4 257.8</b> (Rwy 18R-36L) <b>133.35 257.8</b>	GND CON <b>121.8 348.6</b> (WEST) <b>121.9 348.6</b> (EAST)	CLNC DEL <b>127.15</b> <b>348.6</b>
---	--	---	---	---

△ 1847	△ 926 △ 930 △ 1633 △ 1190	CPDLC
-----------	------------------------------------	-------



ELEV 748	<b>D</b>	TDZE 707
----------	----------	----------

HIRL all Rwys  
REIL Rwys 18L and 23  
TDZ/CL Rwys 18R, 36L, 36C and 36R



3000 TOMME	VGSI and RNAV glidepath not coincident (VGSI Angle 3.00/TCH 72).						
	GLASI	NIVSE	MARJO	DENNE	HUNEX	KRISL	SOLMN
	2500	3000	4000	5000	6000	7000	8000
	1.7	3.7 NM	1.6 NM	3.2 NM	3.2 NM	3.2 NM	3.2 NM
CATEGORY	A	B	C	D			
LPV DA	907/18		200 (200-1/2)				
LNAV/VNAV DA	1229-1 3/8		522 (500-1 3/8)				
LNAV MDA	1320/40	613 (600-3/4)	1320-1 3/8	613 (600-1 3/8)			
<b>C</b> CIRCLING	1380-1	632 (700-1)	1500-2 1/4	752 (800-2 1/4)	1500-2 1/2	752 (800-2 1/2)	

SE-2, 28 NOV 2024 to 26 DEC 2024

SE-2, 28 NOV 2024 to 26 DEC 2024