

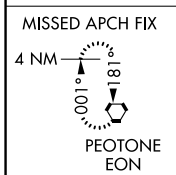
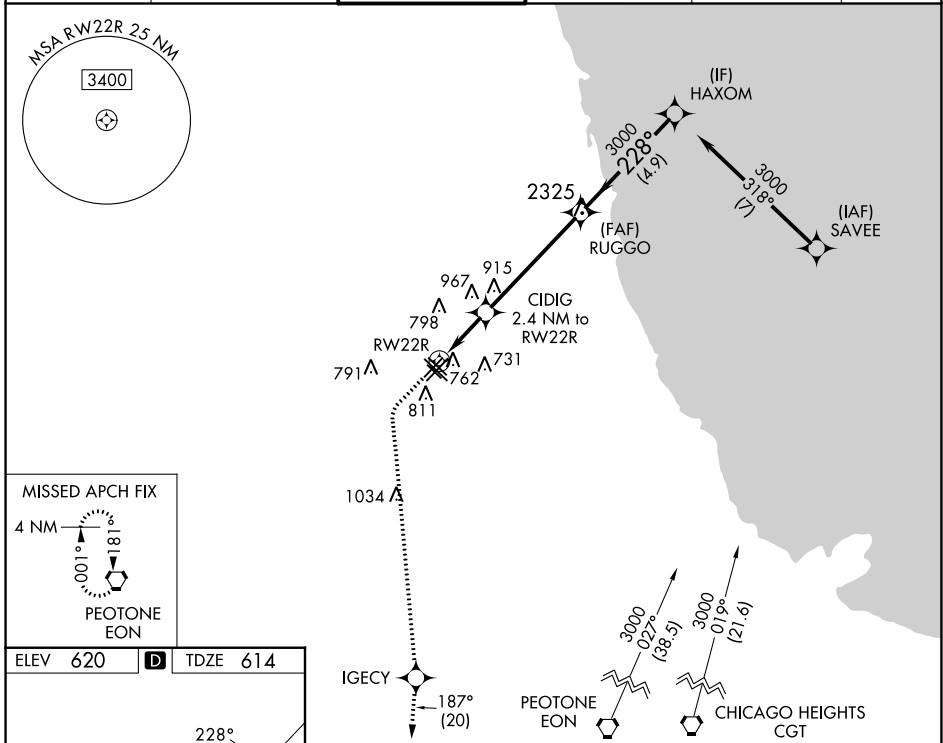
WAAS CH 56641 W22B	APP CRS 228°	Rwy Idg TDZE 614 Apt Elev 620
--	------------------------	---

RNAV (GPS) RWY 22R

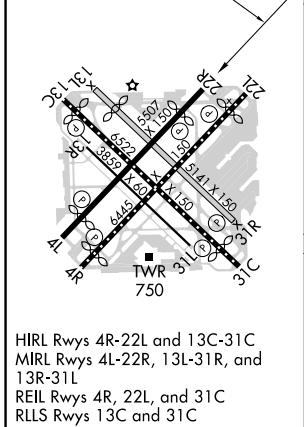
CHICAGO MIDWAY INTL (MDW)

RNP APCH.	MISSED APPROACH: Climb to 1100 then climbing left turn to 2600 direct IGCY and on track 187° to EON VORTAC and hold.
<p>▼ Circling to Rwy 31R NA at night. For uncompensated Baro-VNAV systems, LNAV/VNAV NA below -19°C or above 54°C.</p> <p>▲ Rwy 22R helicopter visibility reduction below ¾ SM NA.</p>	

D-ATIS 132.75	CHICAGO APP CON 128.2 388.0	MIDWAY TOWER 135.2 269.125	GND CON 118.075	CLNC DEL 124.625	CPDLC
-------------------------	---------------------------------------	--------------------------------------	---------------------------	----------------------------	-------



ELEV 620	D	TDZE 614
----------	----------	----------



HIRL Rwy 4R-22L and 13C-31C
MIRL Rwy 4L-22R, 13L-31R, and 13R-31L
REIL Rwy 4R, 22L, and 31C
RLS Rwy 13C and 31C

1100	2600	IGECY	EON	VGSI and RNAV glidepath not coincident (VGSI Angle 3.00/TCH 35).
↑	↶	✧	tr 187°	✧
*LNAV only.		CIDIG 2.4 NM to RW22R	RUGGO	HAXOM
RW22R		*1.2 NM to RW22R	3000	3000
↶		↶	↶	↶
1.2 NM		1.2 NM	4.9 NM	4.9 NM
*1420				GP 3.01° TCH 55
CATEGORY	A	B	C	D
LPV DA		893-7/8	279 (300-7/8)	
LNAV/VNAV DA		1005-1/8	391 (400-1/8)	
LNAV MDA	1020-1	406 (400-1)	1020-1/8	406 (400-1/8)
C CIRCLING	1120-1	500 (500-1)	1340-2	1340-2 1/4
			720 (800-2)	720 (800-2 1/4)