

| | | |
|-------------|----------|-------------|
| APP CRS | Rwy Idg | 5141 |
| 318° | TDZE | 610 |
| | Apt Elev | 620 |

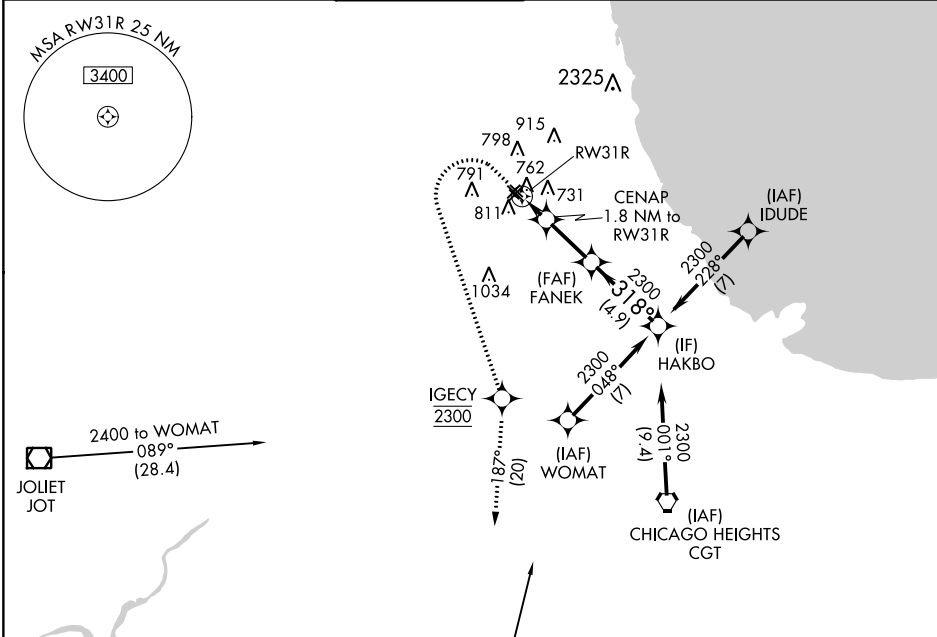
RNAV (GPS) RWY 31R

CHICAGO MIDWAY INTL (MDW)

RNP APCH.
 ▼ Rwy 31R helicopter visibility reduction below 1 SM NA.
 ▲ Straight-in Rwy 31R and Circling Rwy 31R NA at night.

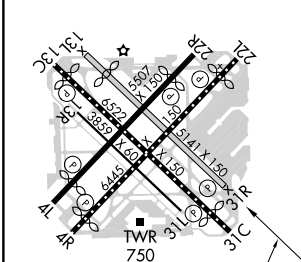
MISSED APPROACH: Climb to 1100 then climbing left turn to 2300 direct IGECY then climb to 2600 on track 187° to EON VORTAC and hold.

| | | | | | |
|---------------|--------------------|----------------------|----------------|----------------|-------|
| D-ATIS | CHICAGO APP CON | MIDWAY TOWER | GND CON | CLNC DEL | CPDLC |
| 132.75 | 128.2 388.0 | 135.2 269.125 | 118.075 | 124.625 | |

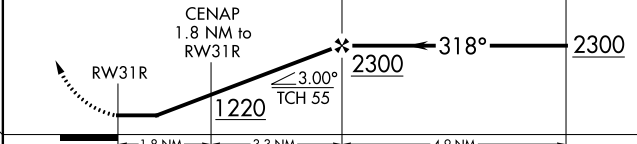


| | | |
|----------|----------|----------|
| ELEV 620 | D | TDZE 610 |
|----------|----------|----------|

HIRL Rwy 4R-22L and 13C-31C
 MIRL Rwy 4L-22R, 13L-31R, and 13R-31L
 REIL Rwy 4R, 22L, and 31C
 RLLS Rwy 13C and 31C



| | | | | | |
|------|------|---------|------|-----|--|
| 1100 | 2300 | IGECY | 2600 | EON | VGSI and descent angles not coincident (VGSI Angle 3.00/TCH 44). |
| ↑ | ↙ | ✧ | ↑ | ⬠ | |
| | | tr 187° | | | |



| | | | | |
|-------------------|--------------------|---|----------------------|----------------------|
| CATEGORY | A | B | C | D |
| LNAV MDA | 1020-1 410 (400-1) | | 1020-1½ 410 (400-1½) | |
| C CIRCLING | 1120-1 500 (500-1) | | 1340-2 720 (800-2) | 1340-2¼ 720 (800-2¼) |

EC-3, 28 NOV 2024 to 26 DEC 2024

EC-3, 28 NOV 2024 to 26 DEC 2024