

# DEBERRY FIVE ARRIVAL

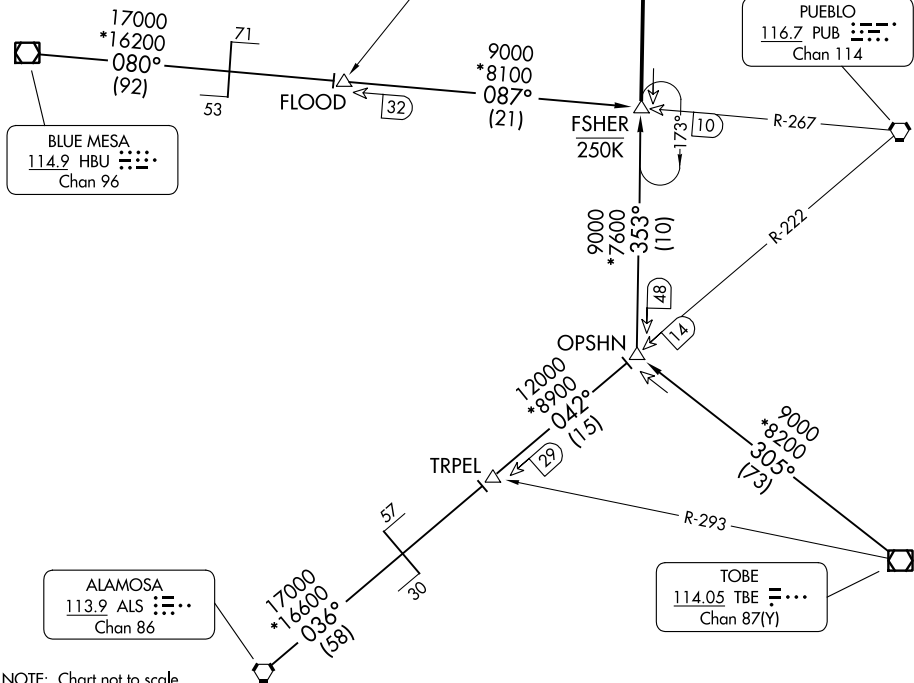
AL-87 (FAA)

CITY OF COLORADO SPRINGS MUNI (COS)  
COLORADO SPRINGS, COLORADO

SPRINGS APP CON  
124.0 257.875  
ATIS  
125.0 254.3

BLACK FOREST  
112.5 BRK  
Chan 72

NOTE: RADAR required.



SW-1, 28 NOV 2024 to 26 DEC 2024

SW-1, 28 NOV 2024 to 26 DEC 2024

NOTE: Chart not to scale.

### ARRIVAL ROUTE DESCRIPTION

**ALAMOSA TRANSITION (ALS.DBRY5):** From over ALS VORTAC on ALS R-036 and PUB R-222 to TRPEL, then on PUB R-222 and BRK R-173 to FSHER. Thence. . .

**BLUE MESA TRANSITION (HBU.DBRY5):** From over HBU VOR/DME on HBU R-080 and PUB R-267 to FLOOD, then on PUB R-267 to FSHER. Thence. . .

**TOPE TRANSITION (TBE.DBRY5):** From over TBE VOR/DME on TBE R-305 and BRK R-173 to FSHER. Thence. . .

. . . From over FSHER on BRK R-173 to BRK VOR/DME. Expect RADAR vectors to the final approach course at or before BRK VOR/DME.

**LOST COMMUNICATIONS:** Proceed to BRK VOR/DME.

# DEBERRY FIVE ARRIVAL