


RNAV (RNP) Z RWY 35L

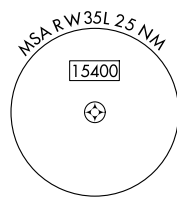
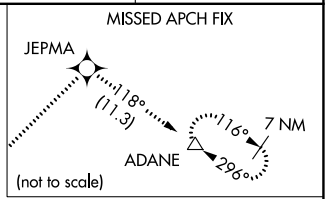
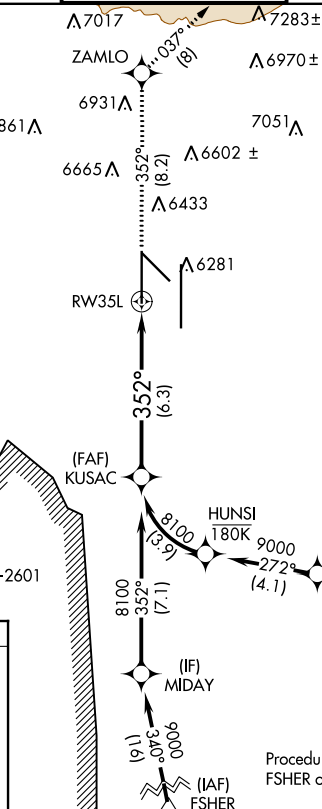
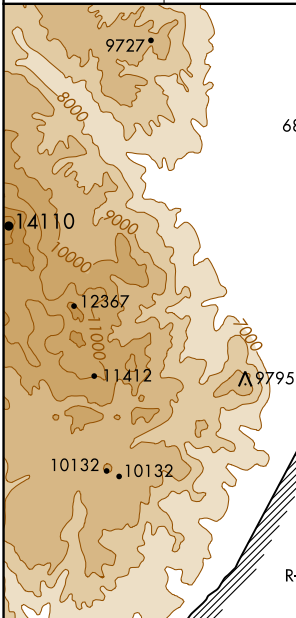
CITY OF COLORADO SPRINGS MUNI (COS)

APP CRS 352°	Rwy Idg 11022
	TDZE 6075
	Apt Elev 6187

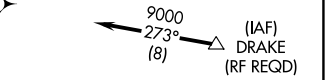
▼ For uncompensated Baro-VNAV systems, procedure NA below -21°C (-5°F) or above 45°C (113°F). GPS required. For inop MALSRS increase RNP 0.15 visibility all Cats to RVR 5000. RADAR monitoring required when R-2601 in use.

MALSRS  MISSED APPROACH: Climb to 9000 on track 352° to ZAMLO and on track 037° to JEPMA and on track 118° to ADANE and hold.

ATIS 125.0 254.3	SPRINGS APP CON 124.0 257.875	SPRINGS TOWER 119.9 360.6	GND CON 121.7 348.6	CLNC DEL 134.45 363.125
----------------------------	---	-------------------------------------	-------------------------------	-----------------------------------

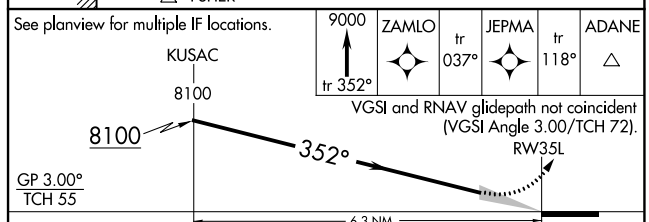
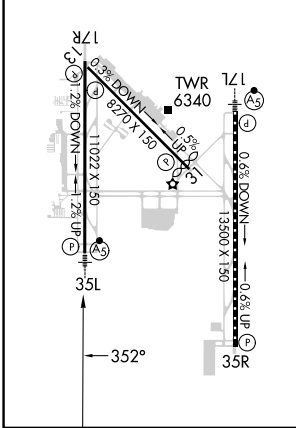


Procedure NA for arrivals at DRAKE on V83 southeast bound and V389 southbound.



Procedure NA for arrivals at FSHER on V244 eastbound.

ELEV 6187	TDZE 6075
MIRL Rwy 13-31	
HIRL Rwy 17R-35L and 17L-35R	
REIL Rwy 13, 17R, 31, and 35R	
TDZ/CL Rwy 17L and 35R	



GP 3.00°	TCH 55	6.3 NM			
CATEGORY	A	B	C	D	
RNP 0.15 DA		6372/30	297 (200-5%)		
RNP 0.30 DA		6427/40	352 (300-34)		

AUTHORIZATION REQUIRED

SW-1, 28 NOV 2024 to 26 DEC 2024

SW-1, 28 NOV 2024 to 26 DEC 2024