

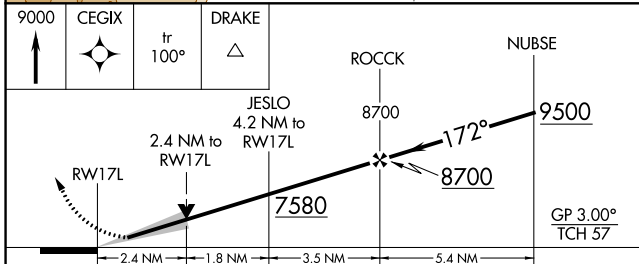
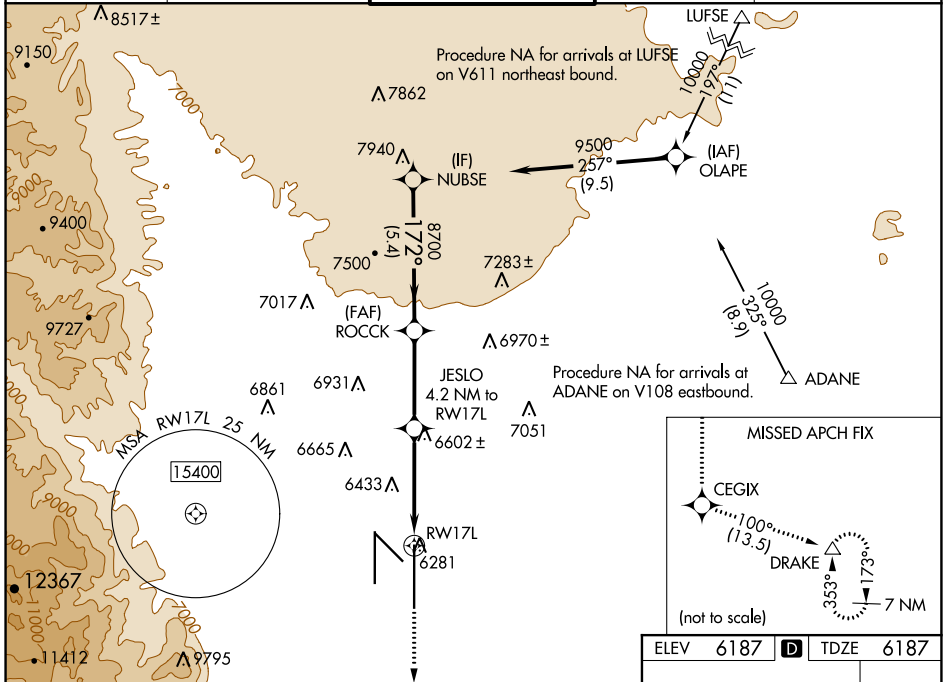
WAAS CH 69618 W17A	APP CRS 172°	Rwy Idg TDZE 6187 Apt Elev 6187	13500
--	------------------------	---	--------------

RNAV (GPS) Y RWY 17L

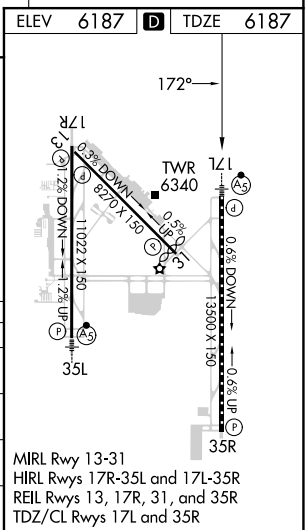
CITY OF COLORADO SPRINGS MUNI (COS)

RNP APCH - GPS.		MALSRL	MISSED APPROACH: Climb to 9000 direct CEGIX and on track 100° to DRAKE and hold.
⚠ For uncompensated Baro-VNAV systems, LNAV/VNAV NA below -21°C or above 44°C. For inop MALSRL, increase LNAV Cat C/D visibility to 2½ SM.			

ATIS 125.0 254.3	SPRINGS APP CON 124.0 257.875	SPRINGS TOWER 119.9 360.6	GND CON 121.7 348.6	CLNC DEL 134.45 363.125
----------------------------	---	-------------------------------------	-------------------------------	-----------------------------------



CATEGORY	A	B	C	D
LPV DA		6387/18	200 (200-½)	
LNAV/VNAV DA		6602/45	415 (500-¾)	
LNAV MDA	7000/24 813 (900-½)	7000/40 813 (900-¾)	7000-1⅞	813 (900-1⅞)
C CIRCLING	7000-1¼	813 (900-1¼)	7040-2½ 853 (900-2½)	7260-3 1073 (1100-3)



SW-1, 28 NOV 2024 to 26 DEC 2024

SW-1, 28 NOV 2024 to 26 DEC 2024