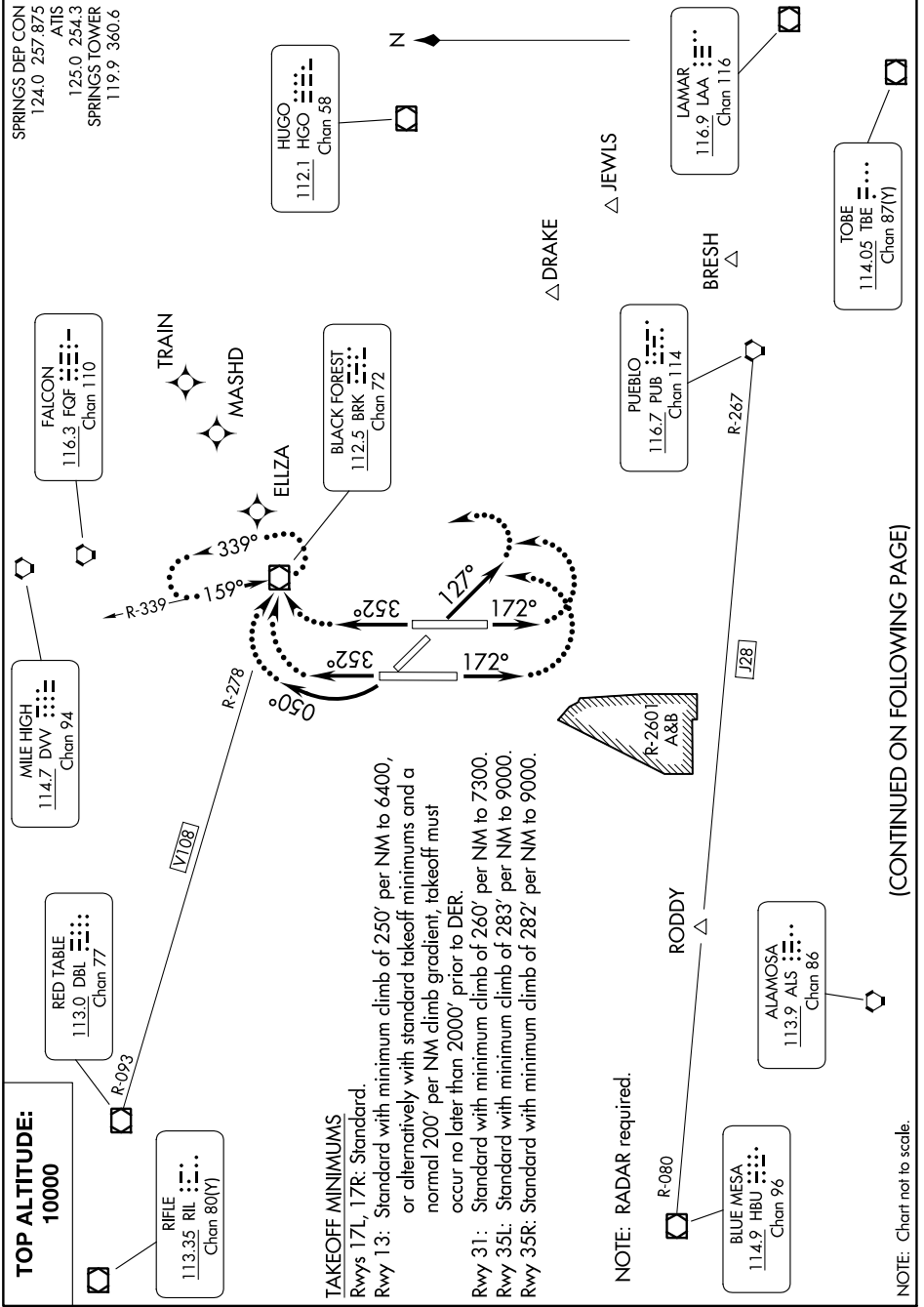


# SPRINGS SIX DEPARTURE

AL-87 (FAA)

CITY OF COLORADO SPRINGS MUNI (COS)  
COLORADO SPRINGS, COLORADO

SW-1, 28 NOV 2024 to 26 DEC 2024



**TOP ALTITUDE:**  
**10000**

SPRINGS DEP CON  
124.0 257.8/5  
ATIS  
125.0 254.3  
SPRINGS TOWER  
119.9 360.6

FALCON  
116.3 FOF  
Chan 110

MILE HIGH  
114.7 DVV  
Chan 94

RED TABLE  
113.0 DBL  
Chan 77

RIFLE  
113.35 RIL  
Chan 80(Y)

HUGO  
112.1 HGO  
Chan 58

BLACK FOREST  
112.5 BRK  
Chan 72

PUEBLO  
116.7 PUB  
Chan 114

LAMAR  
116.9 LAA  
Chan 116

TOBE  
114.05 TBE  
Chan 87(Y)

ALAMOSA  
113.9 ALS  
Chan 86

BLUE MESA  
114.9 HBU  
Chan 96

**TAKEOFF MINIMUMS**  
Rwys 17L, 17R: Standard.  
Rwy 13: Standard with minimum climb of 250' per NM to 6400,  
or alternatively with standard takeoff minimums and a  
normal 200' per NM climb gradient, takeoff must  
occur no later than 2000' prior to DER.  
Rwy 31: Standard with minimum climb of 260' per NM to 7300.  
Rwy 35L: Standard with minimum climb of 283' per NM to 9000.  
Rwy 35R: Standard with minimum climb of 282' per NM to 9000.

**NOTE: RADAR required.**

(CONTINUED ON FOLLOWING PAGE)

NOTE: Chart not to scale.

# SPRINGS SIX DEPARTURE

SW-1, 28 NOV 2024 to 26 DEC 2024