

COLUMBUS, MISSISSIPPI

# HI-ILS or LOC Z RWY 13C

LOC I-CBM <b>109.3</b>	APCH CRS <b>135°</b>	13C	13L
		Rwy ldg	<b>12,004 8001</b>
		TDZE	<b>196 194</b>
		Arprt Elev	<b>218 218</b>

AL-91 [USAF]

COLUMBUS AFB (KCBM)

▲ \*When ALS inop, increase RVR to 40, vis to ¼ mile.  
 \*\*When ALS inop, increase vis to 1½ miles.

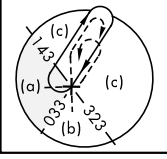
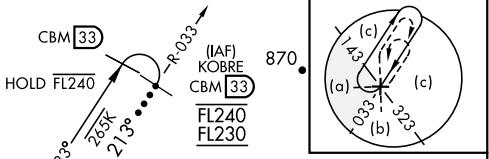


MISSED APPROACH: Climb heading 135° to intercept the CBM VORTAC R-135 outbound to WEEWA (CBM R-135/20) and hold. Maintain 4000

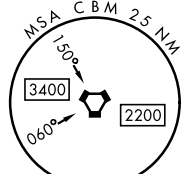
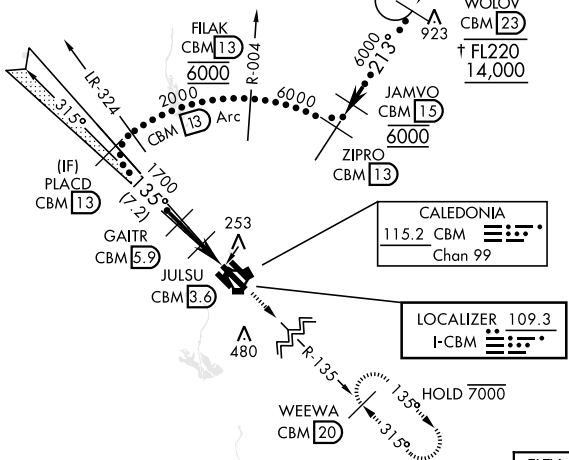
ATIS★ <b>115.2 273.5</b>	APP CON★ <b>126.075 239.25</b> (N) <b>134.55 350.3</b> (SE) <b>135.6 323.275</b> (SW)	TOWER★ <b>126.65 379.925</b>	GND CON★ <b>121.9 275.8</b>	CLNC DEL★ <b>269.55</b>
-----------------------------	--	---------------------------------	--------------------------------	----------------------------

\*\*\* CAUTION:  
 Rwy centerlines separated by 1450',  
 SIDESTEP not for civilian use.  
 \*\*\*\* When ALS inop, increase CAT CDE vis to 1½ miles.

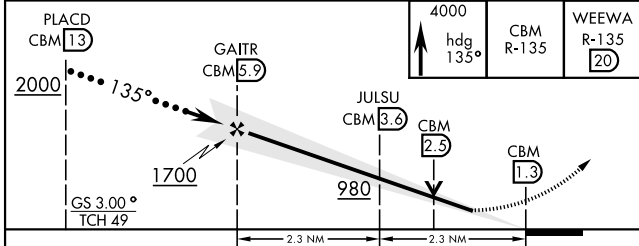
When circling to Rwy 31R at night, operational VGSI required,  
 remain on or above VGSI glidepath until threshold.



† Altitude restriction only applies when WOLOV is IAF.

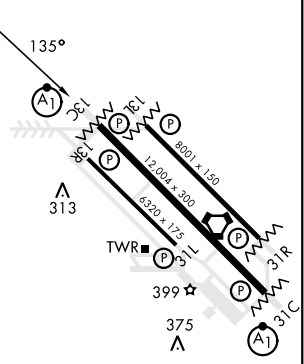


EMERG SAFE ALT 100 NM 3700 FROM CBM



ELEV 218	TDZE 13C 196	TDZE 13L 194
----------	--------------	--------------

CATEGORY	C	D	E
S-ILS 13C*	396/24	200	(200-½)
S-LOC 13C**	640/45	444	(500-¾)
SIDESTEP *** RWY 13L	640-1½	446	(500-1¾)
<b>C</b> CIRCLING	740-1½ 522 (600-1½)	880-2 662 (700-2)	1240-3 1022 (1100-3)
LOCAL ALTIMETER, WITHOUT LAST STEPDOWN FIX			
S-LOC 13C****	840-1¾	644	(700-1¾)
SIDESTEP *** RWY 13L	840-1¾	646	(700-1¾)
<b>C</b> CIRCLING	840-1¾ 622 (700-1¾)	880-2 662 (700-2)	1240-3 1022 (1100-3)



MIRL Rwy 13R-31L	120	140	160	180	200
HIRL Rwy 13C-31C, 13L-31R	2:18	1:58	1:44	1:32	1:23
FAF to MAP 4.6 NM					
Knots	120	140	160	180	200
Min:Sec	2:18	1:58	1:44	1:32	1:23

COLUMBUS, MISSISSIPPI

33° 39'N-88° 27'W

COLUMBUS AFB (KCBM)

Amdt 2 21APR22

# HI-ILS or LOC Z RWY 13C

SC-4, 28 NOV 2024 to 26 DEC 2024

SC-4, 28 NOV 2024 to 26 DEC 2024