

COLUMBUS, MISSISSIPPI

# RNAV (GPS) RWY 31C

WAAS CH 89580 W31A	APCH CRS 315°	Rwy ldg TDZE 12,004 213	Arpt Elev 218
--------------------------	------------------	-------------------------------	------------------

AL-91 (USAF)

COLUMBUS AFB (KCBM)

RNP APCH

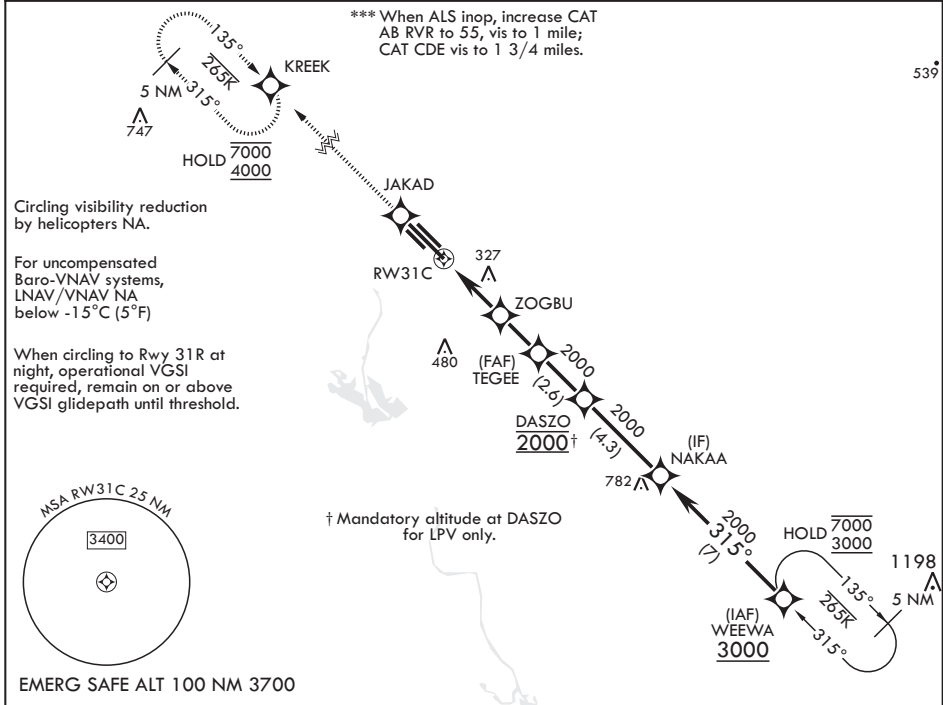
ALSIF-1

MISSED APPROACH: Climb to 4000 direct JAKAD, direct KREEK and hold.

▼ \* When ALS inop increase RVR to 40, vis to ¼ mile.  
\*\* When ALS inop, increase vis to 1 3/8 miles.

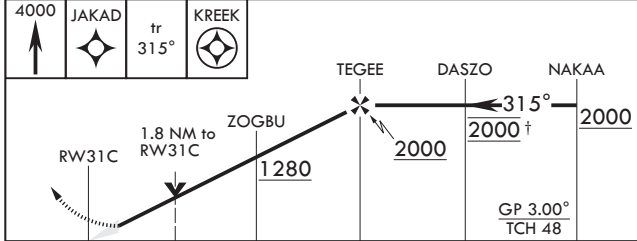


ATIS* 115.2 273.5	APP CON* 126.075 239.25 N 134.55 350.3 SE 135.6 323.275 SW	TOWER* 126.65 379.925	GND CON* 121.9 275.8	CLNC DEL* 269.55
----------------------	---	--------------------------	-------------------------	---------------------

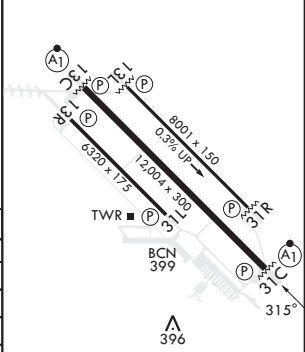


SC-4, 28 NOV 2024 to 26 DEC 2024

SC-4, 28 NOV 2024 to 26 DEC 2024



ELEV 218 TDZE 213



CATEGORY	A	B	C	D	E
LPV DA*	413/24	200	(200-½)		
LNAV/VNAV DA**	671/45	458	(500-¾)		
LNAV MDA***	840/24 627 (700-½)	840-1¼ 627 (700-1¾)	880-2 662 (700-2)	1240-3 1022 (1100-3)	
<b>C</b> CIRCLING	840-1 622 (700-1)	840-1¼ 622 (700-1¼)	880-2 662 (700-2)	1240-3 1022 (1100-3)	

HIRL Rwy's 13C-31C, 13L-31R  
MIRL Rwy 13R-31L

COLUMBUS, MISSISSIPPI

33°39'N - 88°27'W

COLUMBUS AFB (KCBM)

Amdt 4 07SEP23

# RNAV (GPS) RWY 31C