

WAAS CH 48999	APP CRS 281°	Rwy Idg TDZE 815	10113
W28A		Apt Elev 815	

RNAV (GPS) Y RWY 28L

JOHN GLENN COLUMBUS INTL (CMH)

RNP APCH

Simultaneous approach authorized. For uncompensated Baro-VNAV systems, LNAV/VNAV NA below -19°C or above 54°C. LNAV procedure NA during simultaneous operations. Use of FD or AP providing RNAV track guidance required during simultaneous operations. For inop ALS, increase LNAV Cat C/D visibility to 1½ SM.

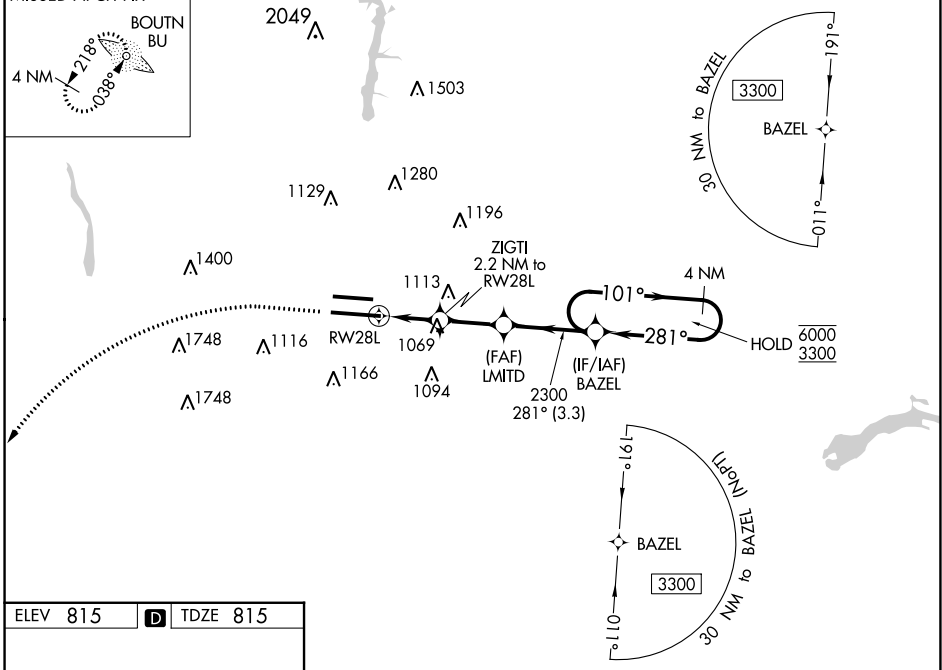
MALSR



MISSED APPROACH: Climb to 1400 then climbing left turn to 3000 direct BOUTN LOM and hold.

D-ATIS 124.6	COLUMBUS APP CON 125.95 371.975	COLUMBUS TOWER 132.7 257.8	GND CON 121.9 348.6	CLNC DEL 126.3	CPDLC
------------------------	---	--------------------------------------	-------------------------------	--------------------------	-------

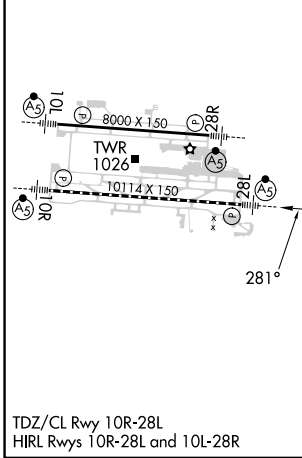
MISSED APCH FIX



EC-2, 28 NOV 2024 to 26 DEC 2024

EC-2, 28 NOV 2024 to 26 DEC 2024

ELEV 815	D	TDZE 815
----------	----------	----------



1400	3000	BU	VGSI and RNAV glidepath not coincident (VGSI Angle 3.00/TCH 68).	4 NM Holding Pattern
*LNAV only.		ZIGTI 2.2 NM to RWY 28L	LMTD 2300	BAZEL 101° → 6000
RWY 28L		*1.4 NM to RWY 28L	*1560	← 281° 3300
-1.4		-0.8	-2.3 NM	3.3 NM
CATEGORY	A	B	C	D
LPV DA		1015/18	200 (200-½)	
LNAV/VNAV DA		1237/40	422 (500-¾)	
LNAV MDA	1320/24	505 (600-½)	1320/55	505 (600-1)
<input checked="" type="checkbox"/> CIRCLING	1340-1	525 (600-1)	1520-2 705 (800-2)	1520-2¼ 705 (800-2¼)