

HI-TACAN W RWY 31L

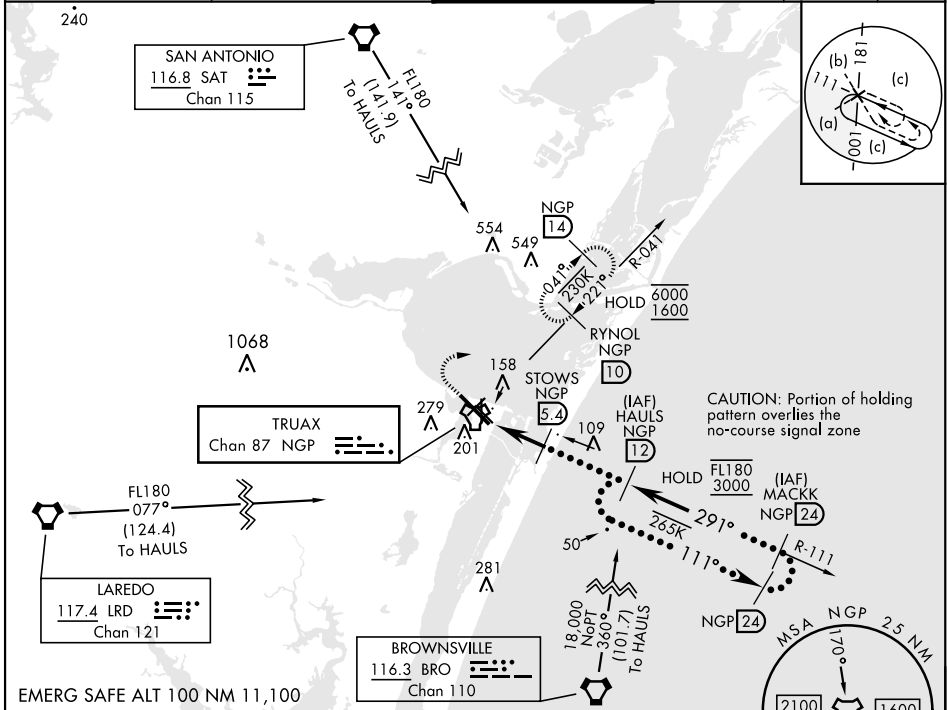
TACAN NGP Chan 87	APCH CRS 291°	Rwy Idg TDZE Arpt Elev	8001 17 18
-----------------------------	-------------------------	------------------------------	---------------------------------------

[USN]

CORPUS CHRISTI NAS (TRUAX FLD) (KNGP)

When local altimeter setting not received, use Corpus Christi (CRP) Intl altimeter setting. MISSED APPROACH: Climb to 1600 direct NGP TACAN and turn right to intercept R-041 to RYNOL and hold.

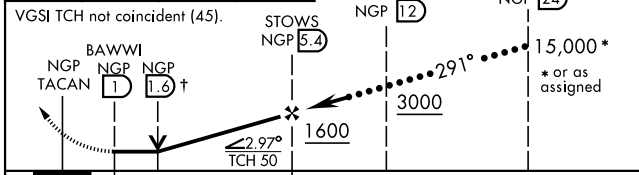
ATIS ★ 127.9 290.9	APP CON 127.5 259.3	NAVY CORPUS TOWER ★ 134.85 0 340.2	GND CON 118.7 257.85	CLNC DEL 314.3	ASR/ PAR
------------------------------	-------------------------------	--	--------------------------------	--------------------------	-------------



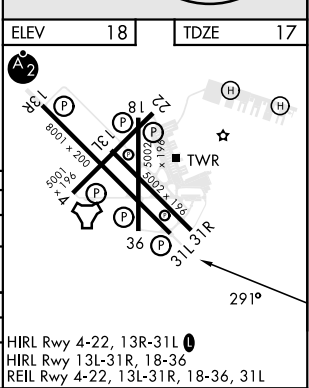
CAUTION: Portion of holding pattern overlies the no-course signal zone

EMERG SAFE ALT 100 NM 11,100

↑ VDP NA when using Corpus Christi (CRP) Intl altimeter setting.



CATEGORY	C	D	E
S-31L	420-1 1/8	403 (500-1 1/8)	
CIRCLING	520-1 1/2 502 (600-1 1/2)	580-2	562 (600-2)
CORPUS CHRISTI (CRP) INTL ALTIMETER SETTING			
S-31L	460-1 3/8	443 (500-1 3/8)	
CIRCLING	540-1 1/2 522 (600-1 1/2)	620-2 602 (700-2)	620-2 1/4 602 (700-2 1/4)



CORPUS CHRISTI, TEXAS 27°42'N-97°17'W CORPUS CHRISTI NAS (TRUAX FLD) (KNGP)

Orig 30NOV23

HI-TACAN W RWY 31L

SC-3, 28 NOV 2024 to 26 DEC 2024

SC-3, 28 NOV 2024 to 26 DEC 2024