

HI-TACAN X RWY 13R

TACAN NGP Chan 87	APCH CRS 147°	Rwy Idg TDZE Arprt Elev	8001 13 18
-----------------------------	-------------------------	-------------------------------	---------------------------------------

[USN]

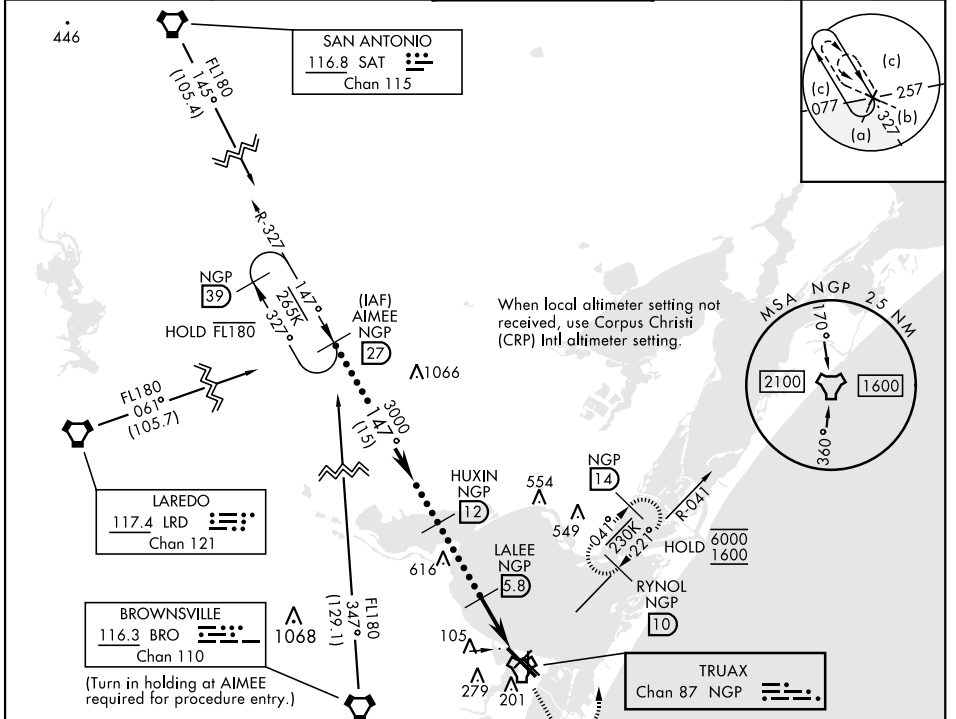
CORPUS CHRISTI NAS (TRUAX FLD) (KNGP)

V * When ALS inop, increase vis to 1½ miles.

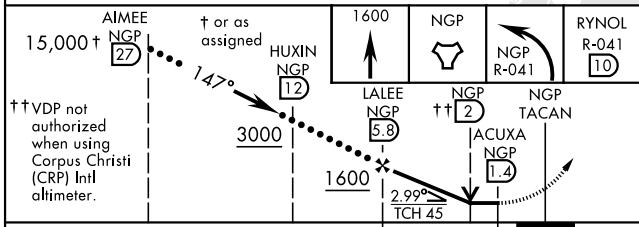
SALSF
A2

MISSED APPROACH: Climb to 1600 direct NGP TACAN and turn left to intercept R-041 to RYNOL and hold.

ATIS * 127.9 290.9	APP CON 120.9 348.725	NAVY CORPUS TOWER * 134.85 0 340.2	GND CON 118.7 257.85	CLNC DEL 314.3	ASR/PAR
-------------------------------------	--	---	---------------------------------------	---------------------------------	----------------



EMERG SAFE ALT 100 NM 11,100



CATEGORY	C	D	E
S-13R*	400-7/8	387	(400-7/8)
CIRCLING	520-1½ 502 (600-1½)	580-2	562 (600-2)
CORPUS CHRISTI (CRP) INTL ALTIMETER SETTING			
S-13R*	420-1	407	(500-1)
CIRCLING	540-1½ 522 (600-1½)	620-2 602 (700-2)	620-2¼ 602 (700-2¼)

ELEV 18 | **TDZE** 13

This diagram shows the TRUAX field with runways 13L, 13R, 13C, 13D, 13E, 13F, 13G, 13H, 13I, 13J, 13K, 13L, 13M, 13N, 13O, 13P, 13Q, 13R, 13S, 13T, 13U, 13V, 13W, 13X, 13Y, 13Z. It also shows taxiways, parking areas, and the tower (TWR). The diagram includes a compass rose and a scale bar.

HIRL Rwy 4-22, 13R-31L
HIRL Rwy 13L-31R, 18-36
REIL Rwy 4-22, 13L-31R, 18-36, 31L

HI-TACAN X RWY 13R

SC-3, 28 NOV 2024 to 26 DEC 2024

SC-3, 28 NOV 2024 to 26 DEC 2024