

# RNAV (GPS) RWY 18

APCH CRS	Rwy ldg	5002
177°	TDZE	18
	Arpt Elev	18

[USN]

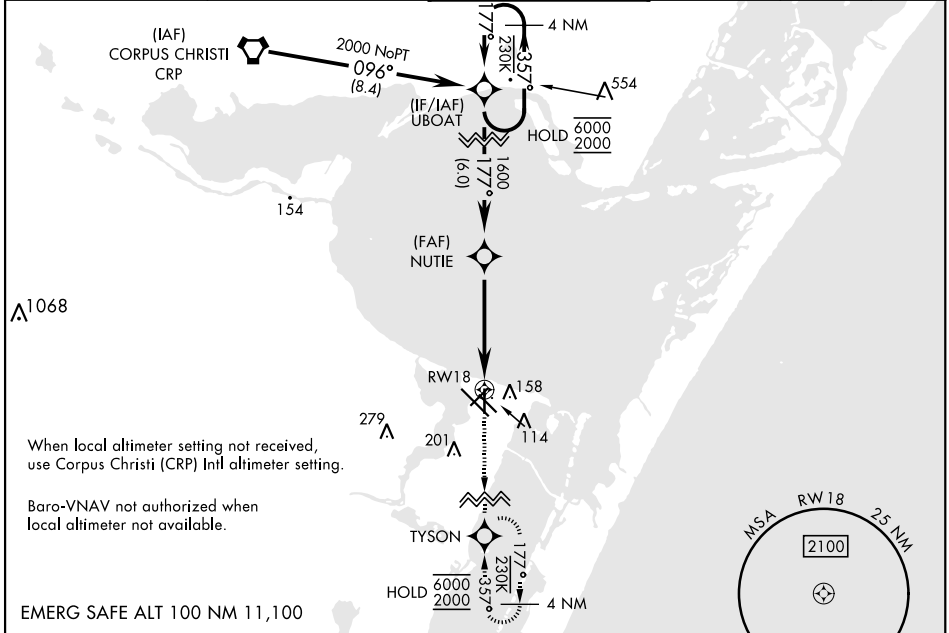
CORPUS CHRISTI NAS (TRUAX FLD) (KNGP)

RNP APCH

For uncompensated Baro-VNAV systems, LNAV/VNAV NA below -15° C (5° F) or above 54° C (129° F).

MISSED APPROACH: Climb to 2000 direct TYSON and hold.

ATIS ★ 127.9 290.9	APP CON 128.675 343.75	NAVY CORPUS TOWER ★ 134.85 340.2	GND CON 118.7 257.85	CLNC DEL 314.3	ASR/ PAR
-----------------------	---------------------------	-------------------------------------	-------------------------	-------------------	-------------



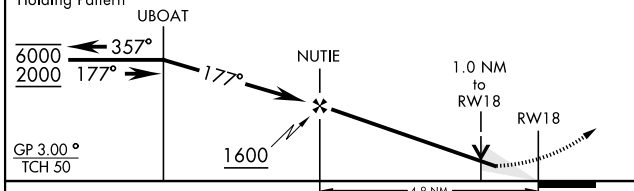
When local altimeter setting not received, use Corpus Christi (CRP) Intl altimeter setting.

Baro-VNAV not authorized when local altimeter not available.

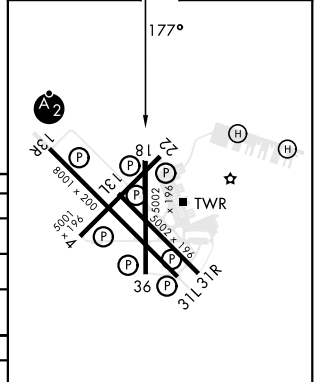
EMERG SAFE ALT 100 NM 11,100

VDP not authorized when using Corpus Christi (CRP) Intl altimeter setting.

2000	TYSON
↑	⊙



ELEV	18	TDZE	18
------	----	------	----



CATEGORY	A	B	C	D
LNAV/VNAV DA	268- <sup>3</sup> / <sub>4</sub>	250	(300- <sup>3</sup> / <sub>4</sub> )	275- <sup>3</sup> / <sub>4</sub> (300- <sup>3</sup> / <sub>4</sub> )
LNAV MDA	380-1		362	(400-1)
CIRCLING	460-1	480-1	520-1 <sup>1</sup> / <sub>2</sub>	580-2
	442 (500-1)	462 (500-1)	502 (600-1 <sup>1</sup> / <sub>2</sub> )	562 (600-2)
CORPUS CHRISTI (CRP) INTL ALTIMETER SETTING				
LNAV MDA	400-1	382 (400-1)	400-1 <sup>1</sup> / <sub>8</sub>	382 (400-1 <sup>1</sup> / <sub>8</sub> )
CIRCLING	500-1	482 (500-1)	540-1 <sup>1</sup> / <sub>2</sub>	620-2
			522 (600-1 <sup>1</sup> / <sub>2</sub> )	602 (700-2)

HIRL Rwy 4-22, 13R-31L  
 HIRL Rwy 13L-31R, 18-36  
 REIL Rwy 4-22, 13L-31R, 18-36, 31L

# RNAV (GPS) RWY 18

SC-3, 28 NOV 2024 to 26 DEC 2024

SC-3, 28 NOV 2024 to 26 DEC 2024