

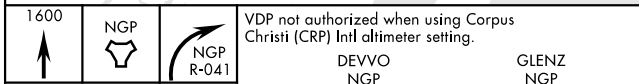
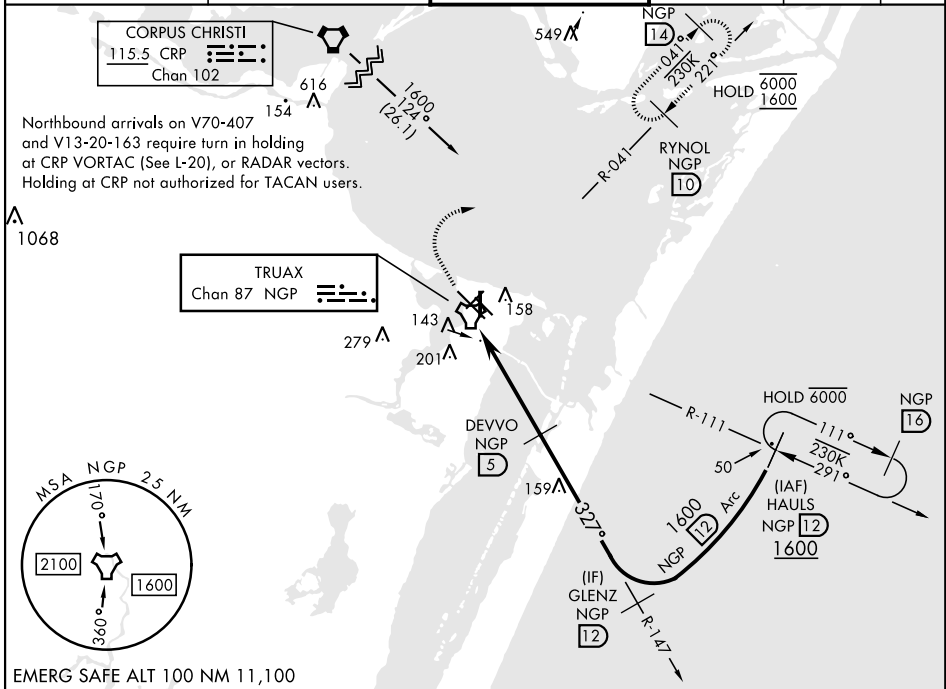
# TACAN RWY 36

TACAN NGP Chan <b>87</b>	APCH CRS <b>327°</b>	Rwy ldg TDZE Arprt Elev	<b>5002</b> <b>18</b> <b>18</b>
-----------------------------	-------------------------	-------------------------------	---------------------------------------

[USN] CORPUS CHRISTI NAS (TRUAX FLD) (KNGP)

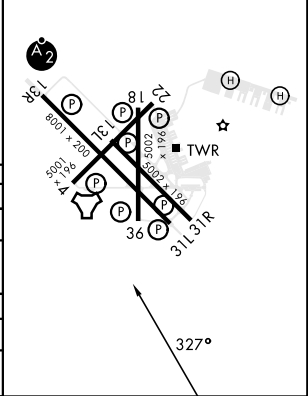
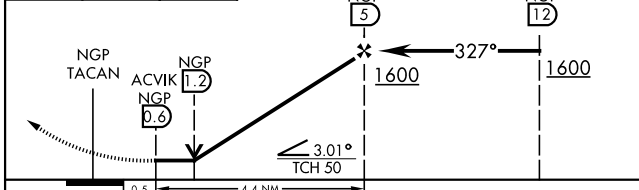
**▼** When local altimeter setting not received, use Corpus Christi (CRP) Intl altimeter setting. MISSED APPROACH: Climb to 1600 direct NGP TACAN and turn right to intercept R-041 to RYNOL and hold.

ATIS ★ <b>127.9 290.9</b>	APP CON <b>128.675 343.75</b>	NAVY CORPUS TOWER ★ <b>134.85 340.2</b>	GND CON <b>118.7 257.85</b>	CLNC DEL <b>314.3</b>	ASR/ PAR
------------------------------	----------------------------------	--	--------------------------------	--------------------------	-------------



ELEV	<b>18</b>	TDZE	<b>18</b>
------	-----------	------	-----------

HIRL Rwy 4-22, 13R-31L  
HIRL Rwy 13L-31R, 18-36  
REIL Rwy 4-22, 13L-31R, 18-36, 31L



CATEGORY	A		B		C		D	
S-36	400-1	382 (400-1)	400-1	382 (400-1)	400-1	382 (400-1)	400-1	382 (400-1)
<b>C</b> CIRCLING	460-1	480-1	460-1	480-1	520-1	500-1	580-2	560-2
	442 (500-1)	462 (500-1)	442 (500-1)	462 (500-1)	502 (600-1)	522 (600-1)	562 (600-2)	582 (600-2)
CORPUS CHRISTI (CRP) INTL ALTIMETER SETTING								
S-36	440-1	422 (500-1)	440-1	422 (500-1)	440-1	422 (500-1)	440-1	422 (500-1)
<b>C</b> CIRCLING	500-1	482 (500-1)	500-1	482 (500-1)	540-1	522 (600-1)	620-2	602 (700-2)
	500-1	482 (500-1)	500-1	482 (500-1)	522 (600-1)	502 (600-1)	602 (700-2)	582 (600-2)

CORPUS CHRISTI, TEXAS 27° 42' N-97° 17' W CORPUS CHRISTI NAS (TRUAX FLD) (KNGP)

Amdt 2 30NOV23

# TACAN RWY 36

SC-3, 28 NOV 2024 to 26 DEC 2024

SC-3, 28 NOV 2024 to 26 DEC 2024