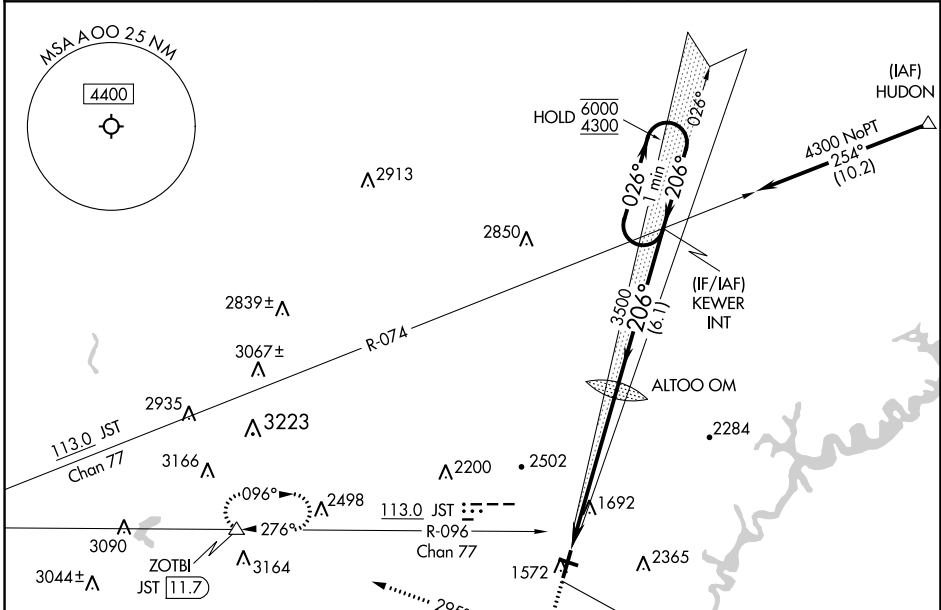


LOC I-AOO <b>111.1</b>	APP CRS <b>206°</b>	Rwy ldg TDZE <b>1486</b> Apt Elev <b>1503</b>
---------------------------	------------------------	---

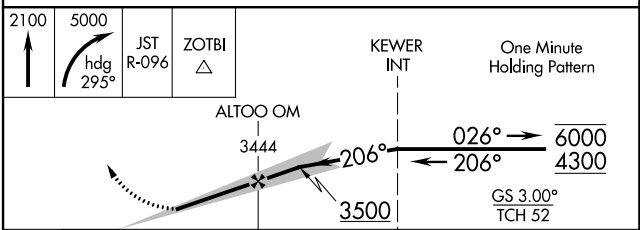
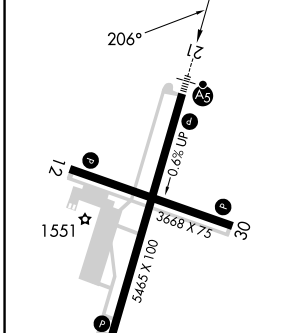
**ILS or LOC RWY 21**  
ALTOONA/BLAIR COUNTY (AOO)

DME required. ▼ Circling NA to Rwy 12 and 30. Circling NA for Cats C, D northwest of Rwy 12 and 21. For inop ALS increase S-LOC 21 visibility Cats C and D to 2 SM.	MALSR 	MISSED APPROACH: Climb to 2100 then climbing right turn to 5000 on heading 295° and on JST R-096 to ZOTBI/JST 11.7 DME and hold, continue climb-in-hold to 5000.
--	-----------	--

ASOS <b>127.125</b>	JOHNSTOWN APP CON * <b>121.2 299.2</b>	CTAF <b>123.60</b>
------------------------	---	-----------------------



ELEV 1503	<b>D</b> TDZE 1486
-----------	--------------------



FAF to MAP 6 NM	Knots					
	60	90	120	150	180	
	Min:Sec	6:00	4:00	3:00	2:24	2:00
<input checked="" type="checkbox"/> CIRCLING	2240-1 737 (800-1)	2240-1 1/4 737 (800-1 1/4)	2240-3/4 754 (800-3/4)	2240-1 3/4 754 (800-1 3/4)	2840-3 1337 (1400-3)	

NE-4, 28 NOV 2024 to 26 DEC 2024

NE-4, 28 NOV 2024 to 26 DEC 2024