

LOC/DME I-DPX <b>111.1</b> Chan <b>48</b>	APP CRS <b>133°</b>	Rwy Idg TDZE Apt Elev <b>8310</b> <b>479</b> <b>487</b>
---	------------------------	--

# ILS Y or LOC Y RWY 13R

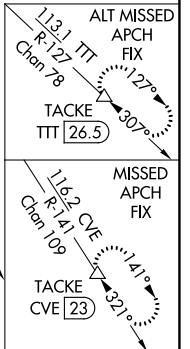
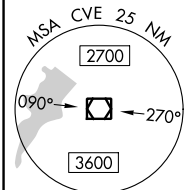
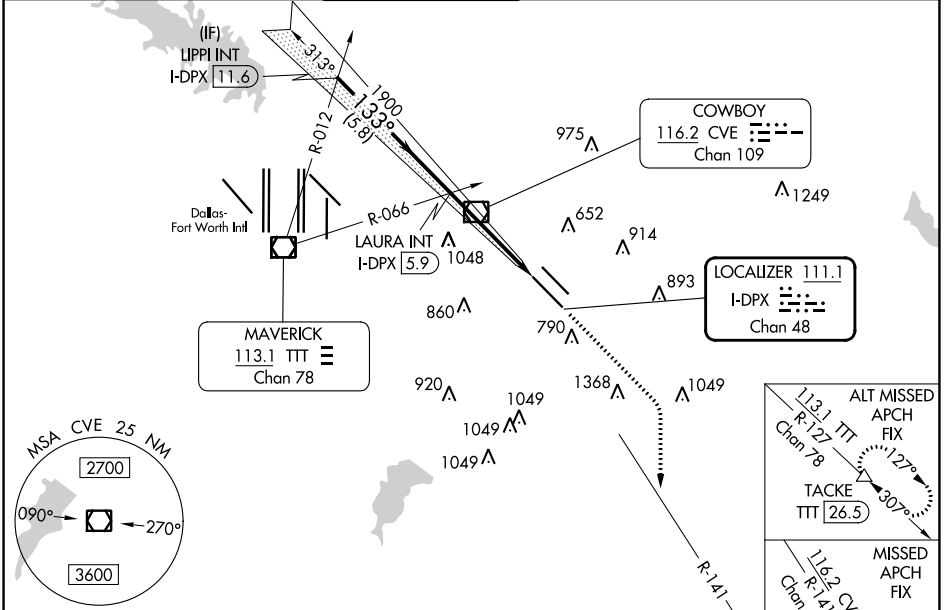
DALLAS LOVE FLD (DAL)

DME required.  
RADAR required for procedure entry.

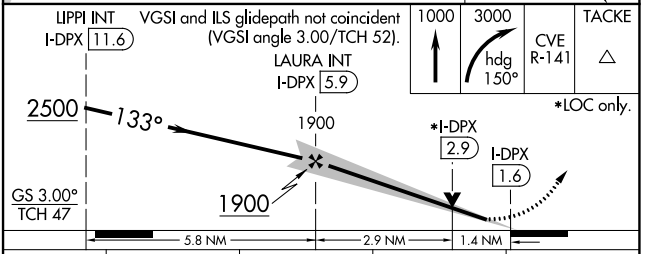
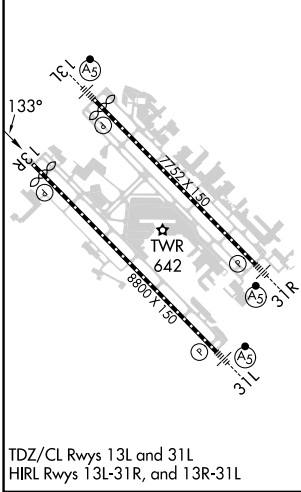
Simultaneous approach authorized.

MISSED APPROACH: Climb to 1000 then climbing right turn to 3000 on heading 150° and CVE VOR/DME R-141 to TACKE/CVE 23 DME and hold.

D-ATIS <b>120.15</b>	LONE STAR APP CON NORTH <b>124.3 282.275</b> SOUTH <b>125.2 343.65</b>	LOVE TOWER <b>123.7 239.3</b>	GND CON <b>121.75 348.6</b>	CLNC DEL <b>127.9</b>	CPDLC
-------------------------	--	----------------------------------	--------------------------------	--------------------------	-------



ELEV 487	<b>D</b>	TDZE 479
----------	----------	----------



CATEGORY	A	B	C	D
S-ILS 13R	679/40		200 (200-3/4)	
S-LOC 13R	960/55	481 (500-1)	960-13/8	481 (500-13/8)
<b>C</b> CIRCLING	1080-1 593 (600-1)	1140-1 653 (700-1)	1220-2 733 (800-2)	1520-3 1033 (1100-3)

SC-2, 28 NOV 2024 TO 26 DEC 2024

SC-2, 28 NOV 2024 TO 26 DEC 2024