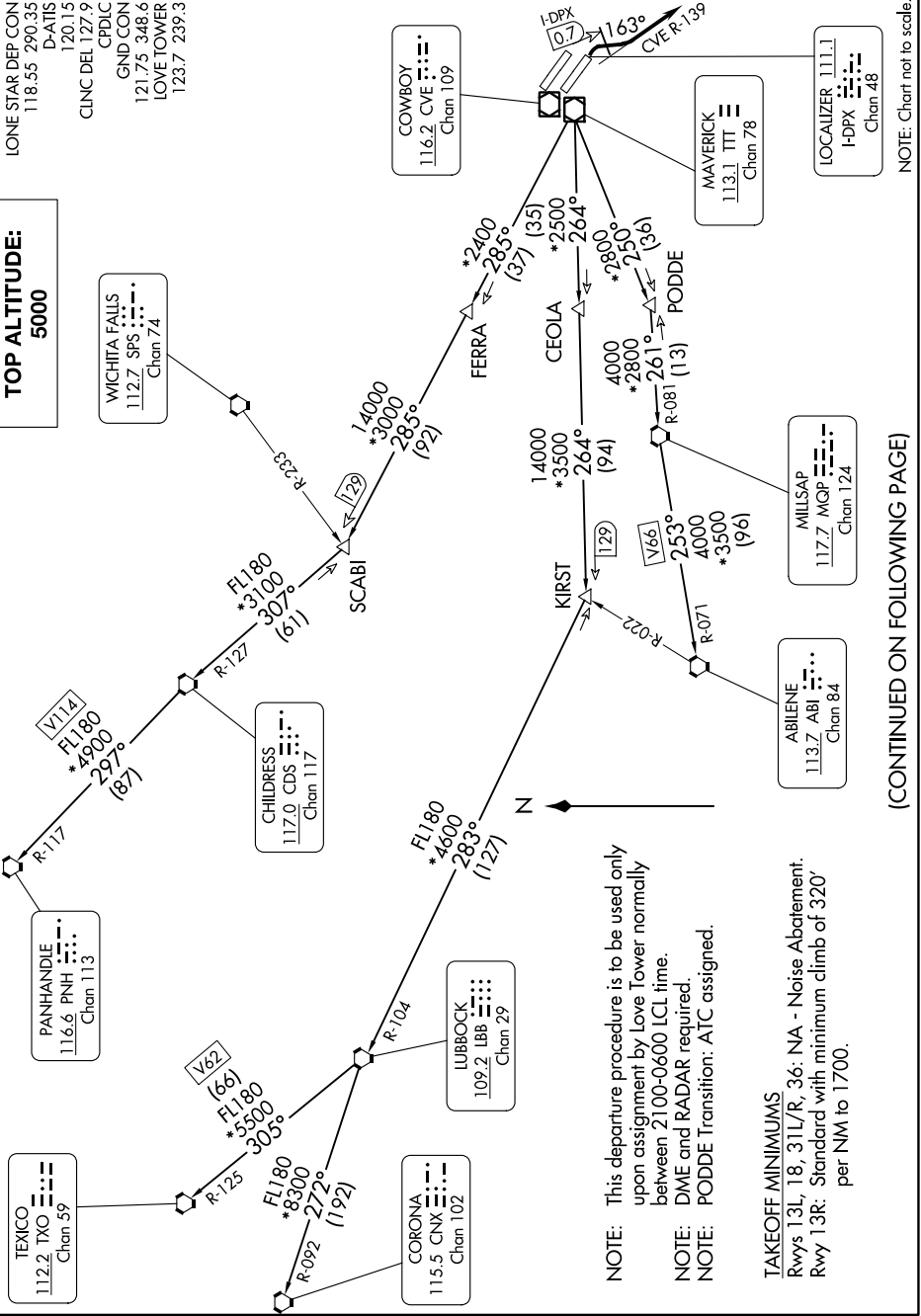


# LOVE SIX DEPARTURE

LONE STAR DEP CON  
118.55 290.35  
D-ATIS  
120.15  
CLINC DEL 127.9  
CPDLC  
GND CON  
121.75 348.6  
LOVE TOWER  
123.7 239.3

**TOP ALTITUDE:  
5000**



NOTE: Chart not to scale.

(CONTINUED ON FOLLOWING PAGE)

NOTE: This departure procedure is to be used only upon assignment by Love Tower normally between 2100-0600 LCL time.  
NOTE: DME and RADAR required.  
NOTE: PODDE Transition: ATC assigned.

**TAKEOFF MINIMUMS**  
Rwys 13L, 18, 31L/R, 36: NA - Noise Abatement.  
Rwy 13R: Standard with minimum climb of 320' per NM to 1700.

SC-2, 28 NOV 2024 to 26 DEC 2024

SC-2, 28 NOV 2024 to 26 DEC 2024