

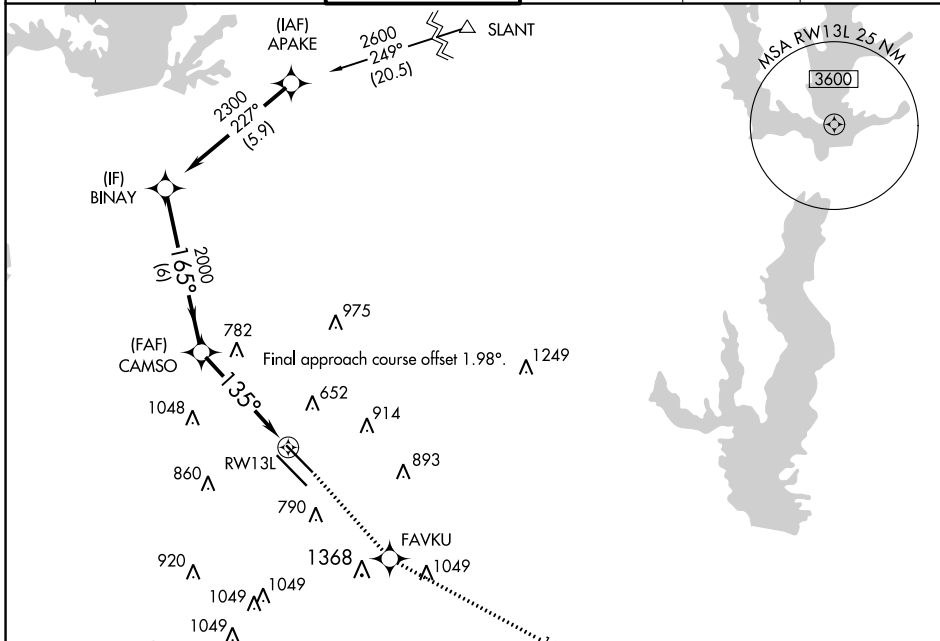
APP CRS	Rwy Idg	<b>7352</b>
<b>135°</b>	TDZE	<b>485</b>
	Apt Elev	<b>487</b>

# RNAV (GPS) Y RWY 13L

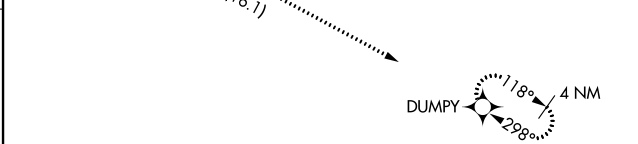
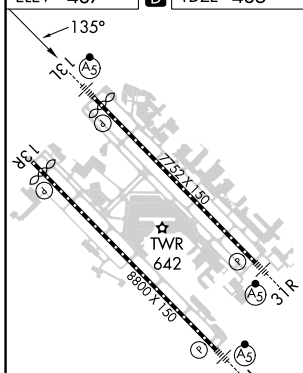
DALLAS LOVE FLD (DAL)

RNP APCH.		MALSRL	MISSED APPROACH: Climb to 3000 direct FAVKU and on track 115° to DUMPY and hold.		

D-ATIS	LONE STAR APP CON	LOVE TOWER	GND CON	CLNC DEL	CPDLC
<b>120.15</b>	NORTH <b>124.3 282.275</b> SOUTH <b>125.2 343.65</b>	<b>123.7 239.3</b>	<b>121.75 348.6</b>	<b>127.9</b>	



ELEV	<b>487</b>	<b>D</b>	TDZE	<b>485</b>
------	------------	----------	------	------------



	BINAY	CAMSOS	FAVKU	DUMPY
	↑	✧	tr 115°	✧
	2300	2000	1368	4 NM
	6 NM	3.3 NM	1.3 NM	

CATEGORY	A	B	C	D
LNAV MDA	940/24	455 (500-1/2)	940/45	455 (500-7/8)
<b>C</b> CIRCLING	1080-1 593 (600-1)	1140-1 653 (700-1)	1220-2 733 (800-2)	1520-3 1033 (1100-3)

SC-2, 28 NOV 2024 to 26 DEC 2024

SC-2, 28 NOV 2024 to 26 DEC 2024