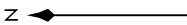


SNSET FOUR DEPARTURE (RNAV)

DALLAS, TEXAS

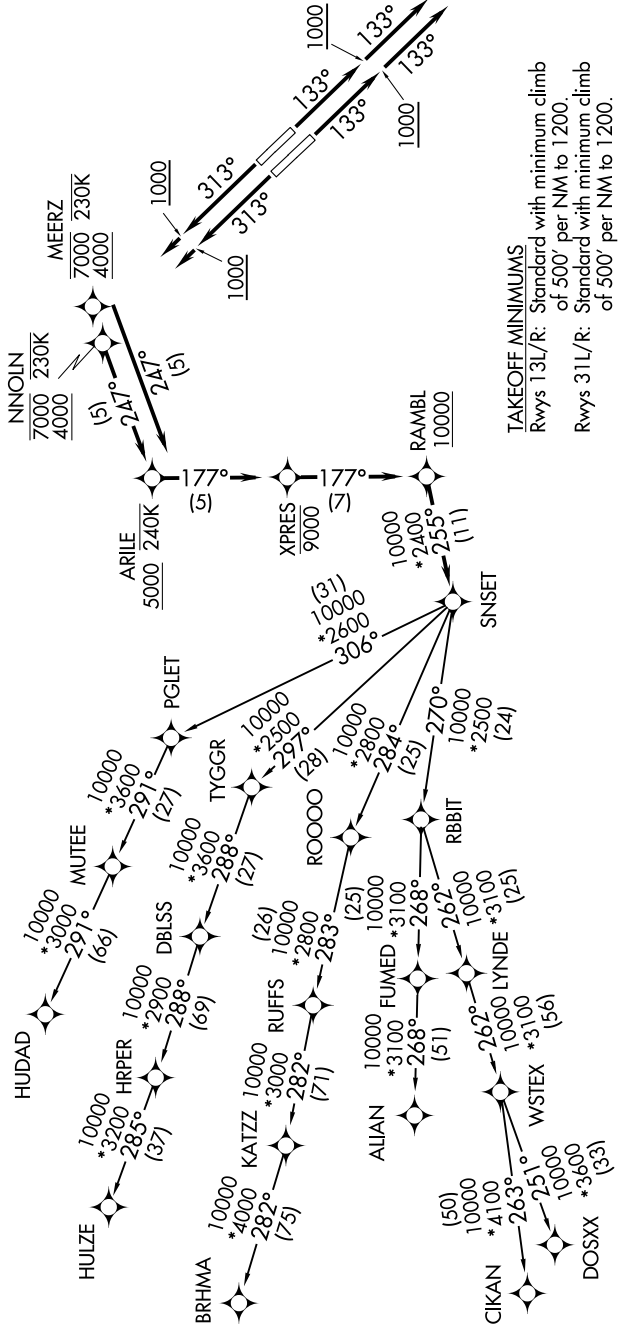
SC-2, 28 NOV 2024 to 26 DEC 2024

- LONE STAR DEP CON 126.475 363.15
- D-ATIS 120.15
- CINC DEL 127.9
- CPDLC
- GND CON 121.75 348.6
- LOVE TOWER 123.7 239.3



TOP ALTITUDE:
RWYS 13L/R: 3000
RWYS 31L/R: 10000

- NOTE: RADAR required.
- NOTE: DME/DME/IRU or GPS required.
- NOTE: RNAV 1.
- NOTE: For use by turbojet aircraft only.
- NOTE: RNAV-capable props: File and expect the SWABR RNAV SID.
- NOTE: ALIAN Transition: ATC assigned only.
- NOTE: Aircraft landing in Lubbock terminal area file the BRHMA enroute transition.



TAKEOFF MINIMUMS
 Rwys 13L/R: Standard with minimum climb of 500' per NM to 1200.
 Rwys 31L/R: Standard with minimum climb of 500' per NM to 1200.

(CONTINUED ON FOLLOWING PAGE)

NOTE: Chart not to scale.

SC-2, 28 NOV 2024 to 26 DEC 2024

SNSET FOUR DEPARTURE (RNAV)

DALLAS, TEXAS