

WAAS CH 45724 W17A	APP CRS 169°	Rwy Idg TDZE Apt Elev	6065 4760 4760
--	------------------------	-----------------------------	---

RNAV (GPS) RWY 17

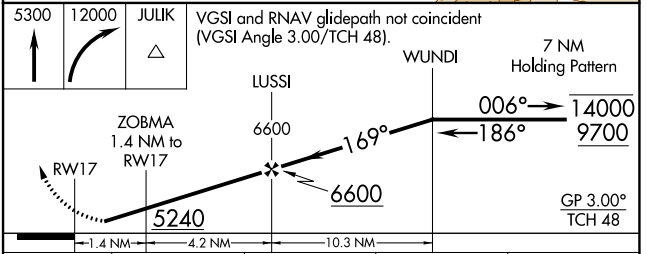
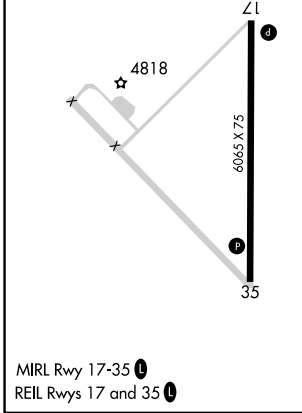
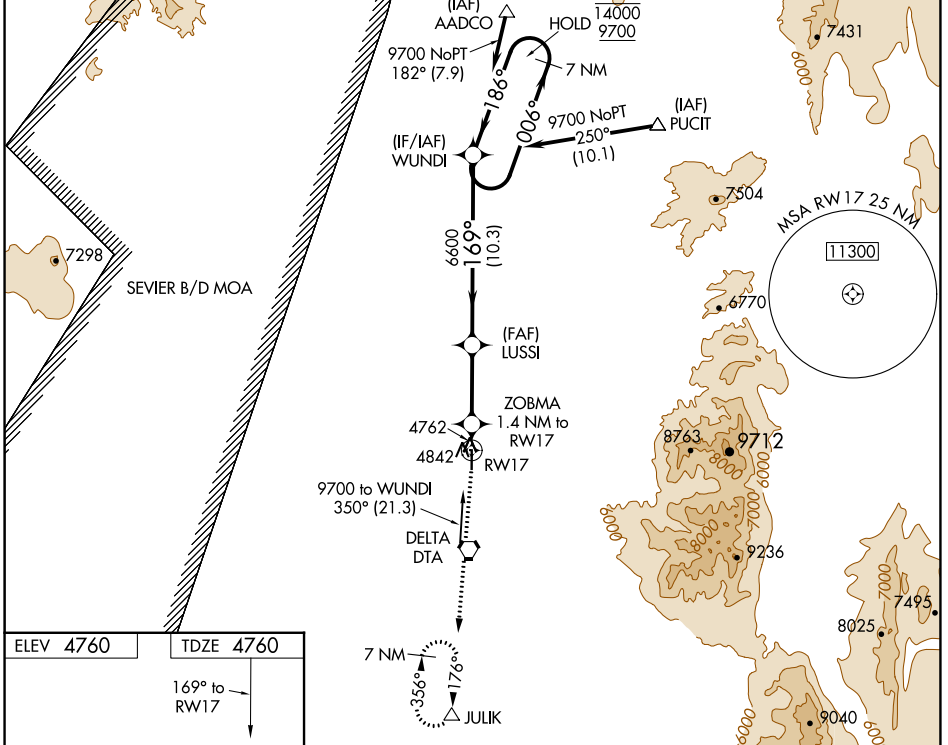
DELTA MUNI (DTA)

RNP APCH-GPS.

▼ Rwy 17 helicopter visibility reduction below 3/4 SM NA. For uncompensated Baro-VNAV systems, LNAV/VNAV NA below -24°C or above 54°C.

MISSED APPROACH: Climb to 5300, then climbing right turn to 12000 direct JULIK and hold, continue climb-in-hold to 12000.

AWOS-3 127.75	SALT LAKE CENTER 127.825 239.025	UNICOM 122.8 (CTAF) 0
-------------------------	--	---------------------------------



CATEGORY	A	B	C	D
LPV DA		5010-1	250 (300-1)	
LNAV/VNAV DA		5010-1	250 (300-1)	
LNAV MDA		5100-1	340 (400-1)	

SW-4, 28 NOV 2024 to 26 DEC 2024

SW-4, 28 NOV 2024 to 26 DEC 2024