

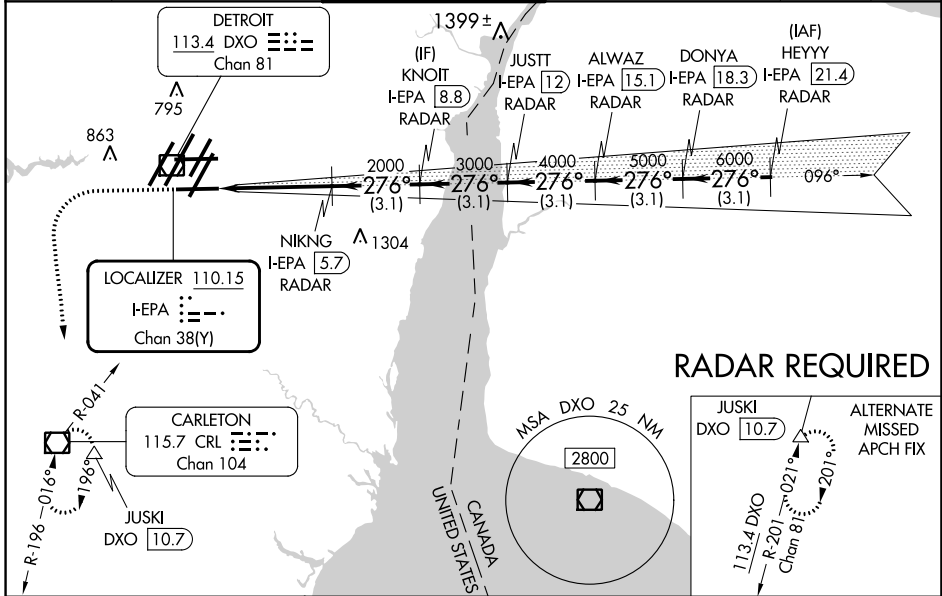
LOC/DME I-EPA 110.15 Chan 38(Y)	APP CRS 276°	Rwy Ldg TDZE Apt Elev 8500 630 645
---	------------------------	--

ILS RWY 27L (SA CAT I & II)

DETROIT METRO WAYNE COUNTY (DTW)

<p>▼ DME or RADAR required. Simultaneous approach authorized. SA Cat I: Requires specific OPSPEC, MSPEC, or LOA approval and use of HUD to DH. SA Cat II: Reduced lighting: Requires specific OPSPEC, MSPEC, or LOA approval and use of Autoland or HUD to touchdown.</p>	<p>MALSR AS</p>	<p>MISSED APPROACH: Climb to 1100 then climbing left turn to 4000 on heading 180° and CRL VOR/DME R-041 to CRL VOR/DME and hold, continue climb-in-hold to 4000.</p>
--	---------------------	--

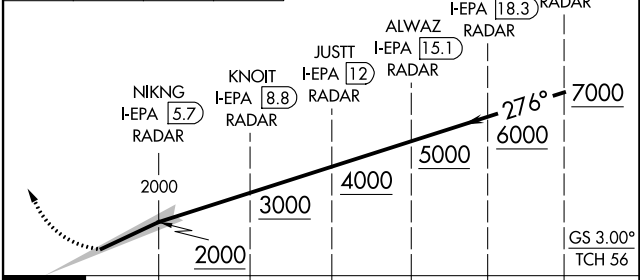
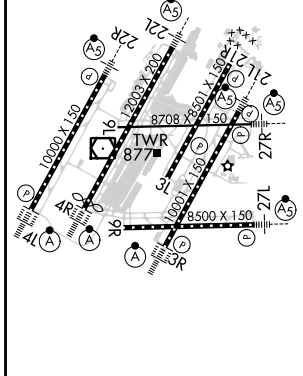
D-ATIS 133.675	DETROIT APP CON 124.05 284.0	METRO TOWER 128.75 317.725	GND CON 121.8 (NW) 119.45 (NE) 132.725 (SW) 119.25 (SE)	CLNC DEL 120.65	CPDLC
--------------------------	--	--------------------------------------	---	---------------------------	-------



EC-1, 28 NOV 2024 to 26 DEC 2024

EC-1, 28 NOV 2024 to 26 DEC 2024

ELEV 645	D	TDZE 630	1100	4000	hdg 180°	CRL R-041	VGSI and ILS glidepath not coincident (VGSI Angle 3.00/TCH 71).
-----------------	----------	-----------------	------	------	----------	-----------	---



1000'	4.1 NM	3.1 NM	3.1 NM	3.1 NM	3.1 NM	3.1 NM
CATEGORY	A	B	C	D		
S-ILS 27L	SA CAT I RA 146/16 150 DA 780					
S-ILS 27L	SA CAT II RA 96/16 100 DA 730					

TDZ/CL Rwy 3R, 4L, 4R and 22R
REIL Rwy 3L, 9L, 9R and 21R
HIRL all runways

SA CATEGORY I & II ILS SPECIAL AIRCREW & AIRCRAFT CERTIFICATION REQUIRED