

LOC/DME I-DTW <b>110.7</b>	APP CRS <b>036°</b>	Rwy Idg <b>11494</b>
Chan <b>44</b>		TDZE <b>640</b>
		Apt Elev <b>645</b>

# ILS RWY 4R (CAT II & III)

DETROIT METRO WAYNE COUNTY (DTW)

RNAV 1-GPS

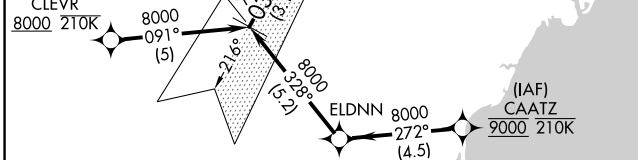
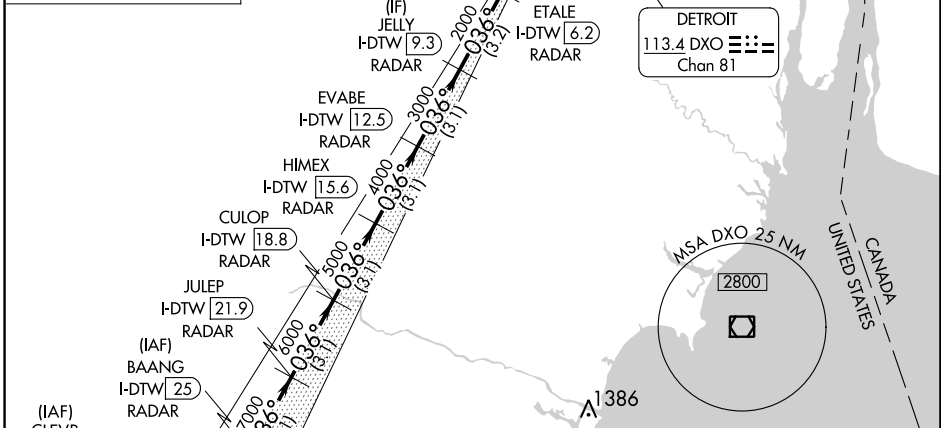
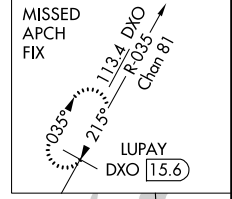
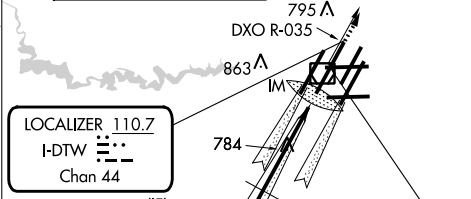
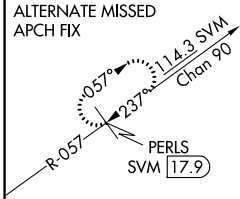
CLEVR, CAATZ and ELDNN: RNAV 1-DME/DME/IRU or GPS required.  
Aircraft not DME/DME/IRU or GPS equipped - RADAR required for procedure entry.  
DME or RADAR required.



MISSED APPROACH: Climb to 4000 on DXO VOR/DME R-035 to LUPAY/DXO VOR/DME/15.6 DME and hold.

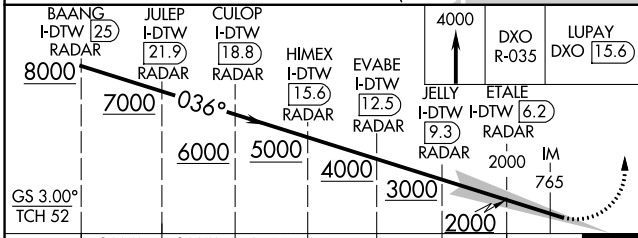
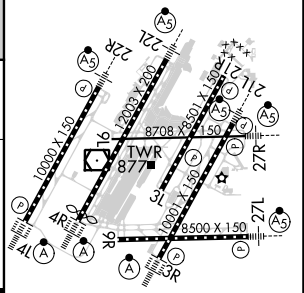
Simultaneous approach authorized.

D-ATIS <b>133.675</b>	DETROIT APP CON <b>124.05 284.0</b>	METRO TOWER <b>128.125 317.725</b>	GND CON <b>121.8 (NW)</b> <b>132.725 (SW)</b>	<b>119.45 (NE)</b> <b>119.25 (SE)</b>	CLNC DEL <b>120.65</b>	CPDLC
--------------------------	--	---------------------------------------	---	--	---------------------------	-------



ELEV 645	<b>D</b> TDZE 640
----------	-------------------

TDZ/CL Rwy 3s, 4L, 4R and 22R  
REIL Rwy 3L, 9L, 9R and 21R  
HIRL all runways



GS 3.00° TCH 52	3.1 NM	3.1 NM	3.1 NM	3.1 NM	3.1 NM	3.2 NM	4.1 NM	980'
CATEGORY	A							
S-ILS 4R	CAT II RA 104/12				100 DA 740			
S-ILS 4R	CAT III				RVR 06			

## CATEGORY II & III ILS - SPECIAL AIRCREW & AIRCRAFT CERTIFICATION REQUIRED

EC-1, 28 NOV 2024 to 26 DEC 2024

EC-1, 28 NOV 2024 to 26 DEC 2024