

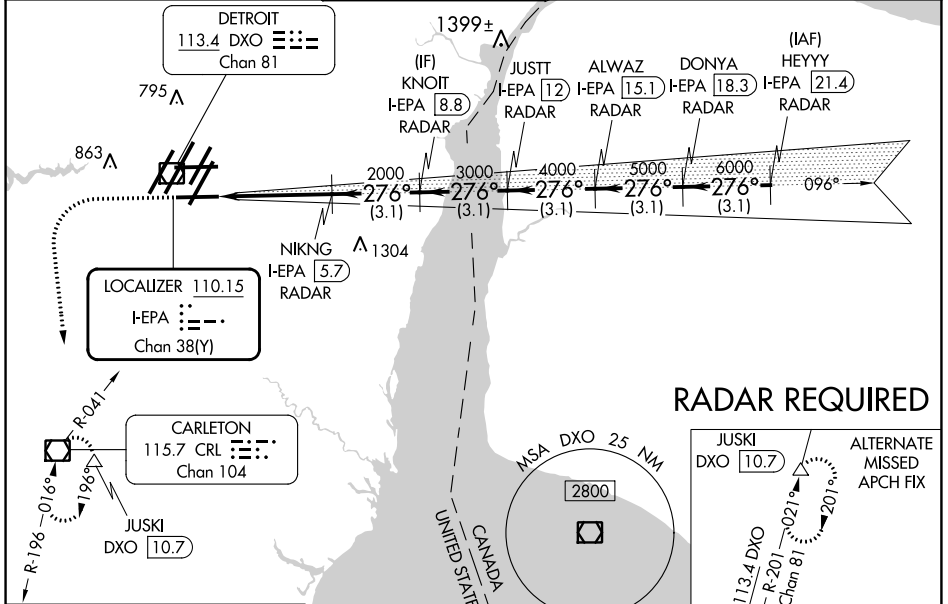
LOC/DME I-EPA 110.15	APP CRS 276°	Rwy Ldg TDZE Apt Elev	8500 630 645
Chan 38(Y)			

ILS or LOC RWY 27L

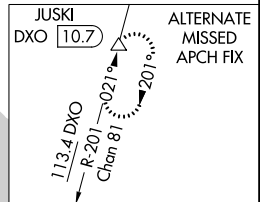
DETROIT METRO WAYNE COUNTY (DTW)

<p>▽ DME or RADAR required. Simultaneous approach authorized. **RVR 1800 authorized with use of FD or AP or HUD to DA.</p>	<p>MALS R</p>	<p>MISSED APPROACH: Climb to 1100 then climbing left turn to 4000 on heading 180° and CRL VOR/DME R-041 to CRL VOR/DME and hold, continue climb-in-hold to 4000.</p>
---	---------------	--

D-ATIS 133.675	DETROIT APP CON 124.05 284.0	METRO TOWER 128.75 317.725	GND CON 121.8 (NW) 119.45 (NE) 132.725 (SW) 119.25 (SE)	CLNC DEL 120.65	CPDLC
--------------------------	--	--------------------------------------	---	---------------------------	-------

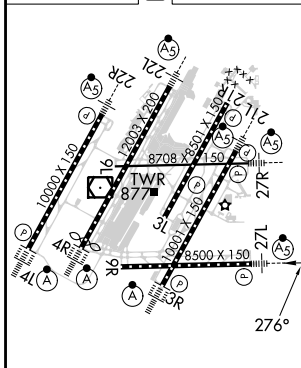
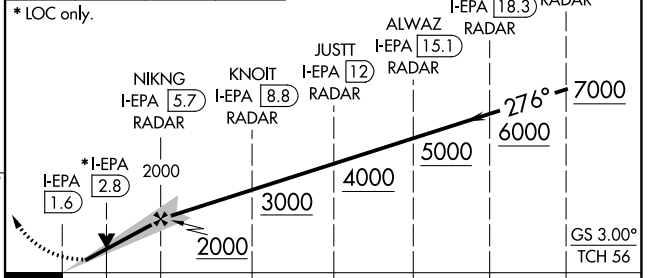


RADAR REQUIRED



ELEV 645	D	TDZE 630
-----------------	----------	-----------------

1100	4000	CRL R-041	CRL	VGSI and ILS glidepath not coincident (VGSI Angle 3.00/TCH 71).
	hdg 180°			



CATEGORY	A	B	C	D
S-ILS 27L **	830/24 200 (200-1/2)			
S-LOC 27L	1080/24	450 (500-1/2)	1080/45	450 (500-2/3)
C CIRCLING	1180-1	535 (600-1)	1180-1 1/2 535 (600-1 1/2)	1240-2 595 (600-2)

EC-1, 28 NOV 2024 to 26 DEC 2024

EC-1, 28 NOV 2024 to 26 DEC 2024