

LOC/DME I-ALA 111.75	APP CRS 038°	Rwy Idg TDZE Apt Elev	10000 645 645
Chan 54 (Y)			

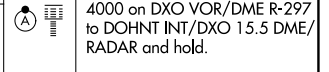
ILS PRM Y RWY 4L (CLOSE PARALLEL)

DETROIT METRO WAYNE COUNTY (DTW)

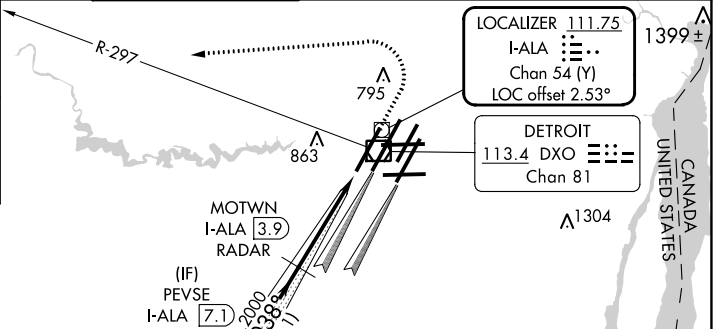
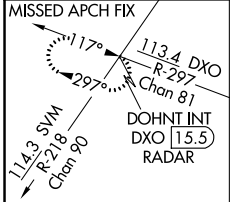
From GRBAC, SIZOR: RNAV 1-DME/DME/IRU or GPS required.
Aircraft not DME/DME/IRU or GPS equipped - RADAR required for procedure entry.
DME or RADAR required.

ALSF-2
MISSED APPROACH: Climb to 1100 then climbing left turn to 4000 on DXO VOR/DME R-297 to DOHNT INT/DXO 15.5 DME/RADAR and hold.

▼ Rwy 4L and 4R separated by 3000 feet centerline to centerline. Simultaneous approach authorized. Use of FD or AP required during simultaneous operations. Dual VHF Comm required. See additional requirements on AAUP.

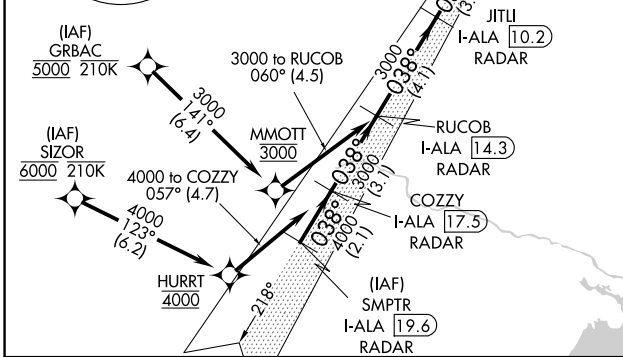
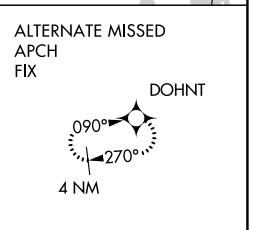
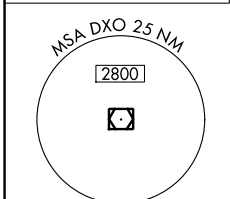


D-ATIS 133.675	DETROIT APP CON 124.05 284.0	METRO TOWER 135.0 317.725 PRM 127.05	GND CON 121.8 (NW) 119.45 (NE) 132.725 (SW) 119.25 (SE)	CLNC DEL 120.65	CPDLC
--------------------------	--	--	---	---------------------------	-------



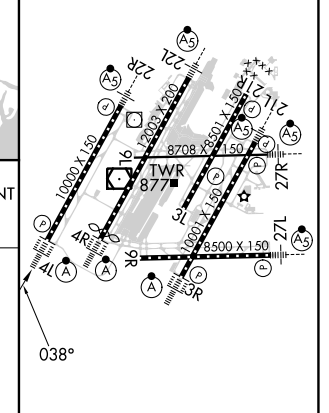
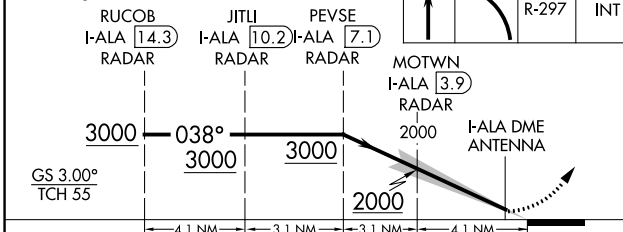
LOCALIZER **111.75**
I-ALA **111.75**
Chan **54** (Y)
LOC offset **2.53°**

DETROIT
113.4 DXO **113.4**
Chan **81**



ELEV 645	D TDZE 645
-----------------	--------------------------

VGSI and ILS glidepath not coincident (VGSI Angle 3.00/TCH 71).



CATEGORY	A	B	C	D
S-ILS 4L		895/24 250 (300-1/2)		

TDZ/CL Rws 3R, 4L, 4R and 22R
REIL Rws 3L, 9L, 9R and 21R
HIRL all runways

EC-1, 28 NOV 2024 to 26 DEC 2024

EC-1, 28 NOV 2024 to 26 DEC 2024