

LOC/DME I-ALA <b>111.75</b> Chan <b>54 (Y)</b>	APP CRS <b>038°</b>	Rwy Idg TDZE Apt Elev <b>10000</b> <b>645</b> <b>645</b>
--	------------------------	---

# ILS Y RWY 4L

DETROIT METRO WAYNE COUNTY (DTW)

From GRBAC, SIZOR: RNAV 1-DME/DME/IRU or GPS required.  
Aircraft not DME/DME/IRU or GPS equipped - RADAR required for procedure entry.  
DME or RADAR required.

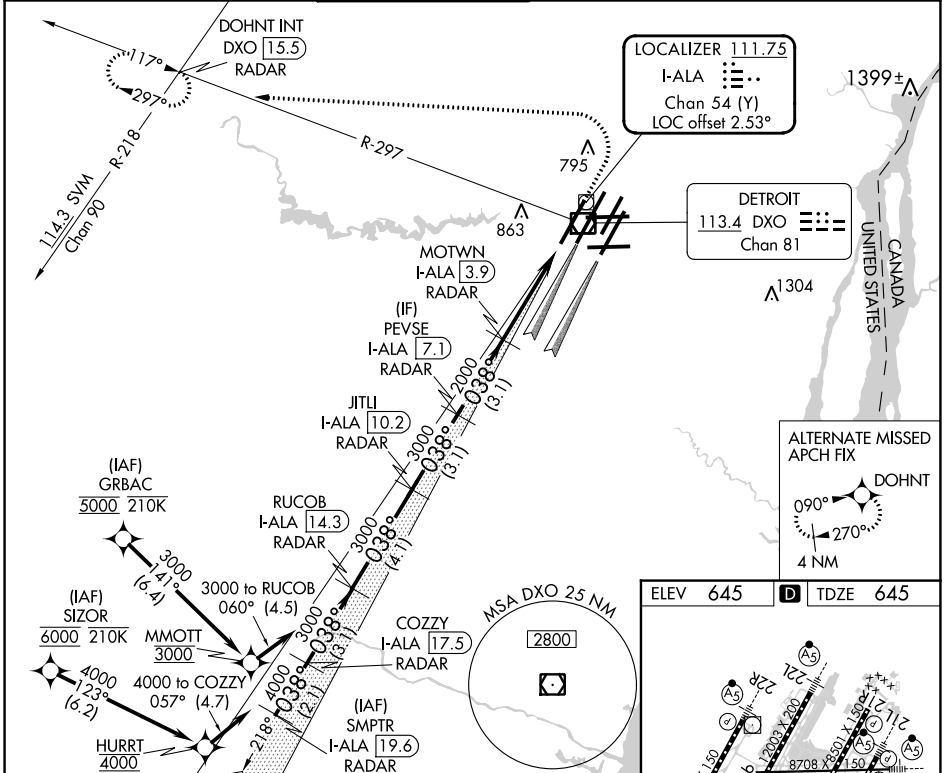
ALSF-2



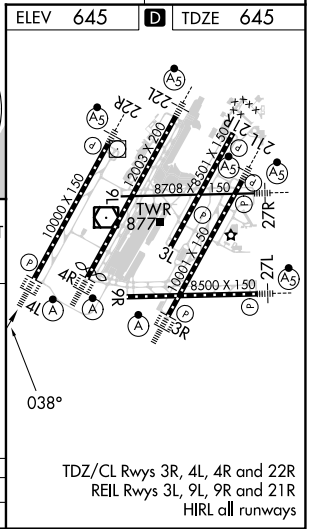
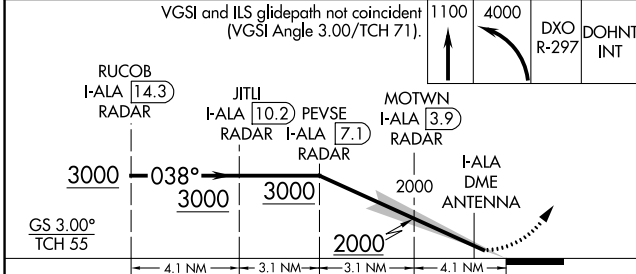
MISSED APPROACH: Climb to 1100 then climbing left turn to 4000 on DXO VOR/DME R-297 to DOHNT INT/DXO 15.5 DME/RADAR and hold.

Simultaneous approach authorized.

D-ATIS <b>133.675</b>	DETROIT APP CON <b>124.05 284.0</b>	METRO TOWER <b>135.0 317.725</b>	GND CON <b>121.8 (NW) 119.45 (NE)</b> <b>132.725 (SW) 119.25 (SE)</b>	CLNC DEL <b>120.65</b>	CPDLC
--------------------------	--	-------------------------------------	---	---------------------------	-------



VGSI and ILS glidepath not coincident (VGSI Angle 3.00/TCH 71).



TDZ/CL Rwys 3R, 4L, 4R and 22R  
REIL Rwys 3L, 9L, 9R and 21R  
HIRL all runways

EC-1, 28 NOV 2024 to 26 DEC 2024

EC-1, 28 NOV 2024 to 26 DEC 2024