

(KZLOV2.WINNZ) 24137

# KZLOV TWO DEPARTURE (RNAV)

DETROIT METRO WAYNE COUNTY (DTW)  
AL-119 (FAA) DETROIT, MICHIGAN

DETROIT DEP CON  
132.025 284.0  
D-ATIS 118.125  
CLINC DEL 120.65  
CPDLC

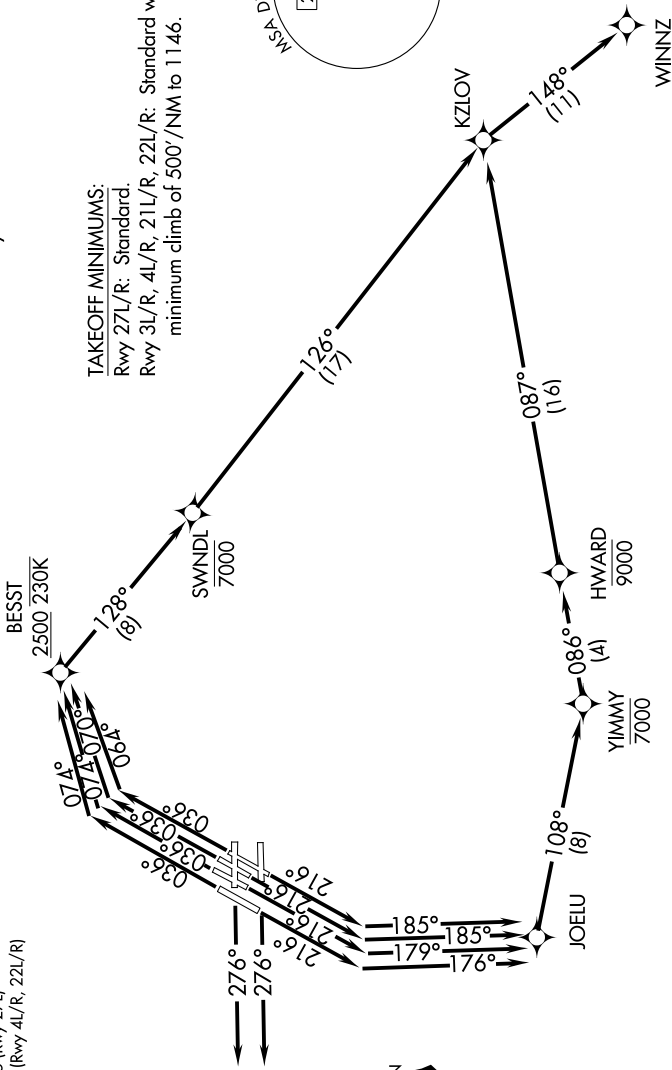
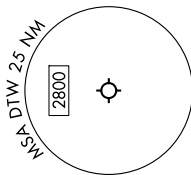
GND CON  
121.8 (NW) 119.45 (NE)  
132.725 (SW) 119.25 (SE)  
METRO TOWER  
118.4 317.725 (Rwy 3L/R, 21L/R, 27R)  
128.75 317.725 (Rwy 27L)  
135.0 317.725 (Rwy 4L/R, 22L/R)

**TOP ALTITUDE:  
10000**

RNAV 1 - DME/DME/IRU or GPS.  
RADAR required.

NOTE: Turbojet departures at/above 10000,  
maintain 280K until advised by ATC.  
NOTE: For use by Cleveland terminal arrivals only.

TAKEOFF MINIMUMS:  
Rwy 27L/R: Standard.  
Rwy 3L/R, 4L/R, 21L/R, 22L/R: Standard with  
minimum climb of 500'/NM to 1146.



(CONTINUED ON FOLLOWING PAGE)

NOTE: Chart not to scale.

# KZLOV TWO DEPARTURE (RNAV)

(KZLOV2.WINNZ) 16MAY24

DETROIT, MICHIGAN  
DETROIT METRO WAYNE COUNTY (DTW)