

(GRAYT.LAYKS2) 21112

# LAYKS TWO ARRIVAL (RNAV)

AL-119 (FAA)

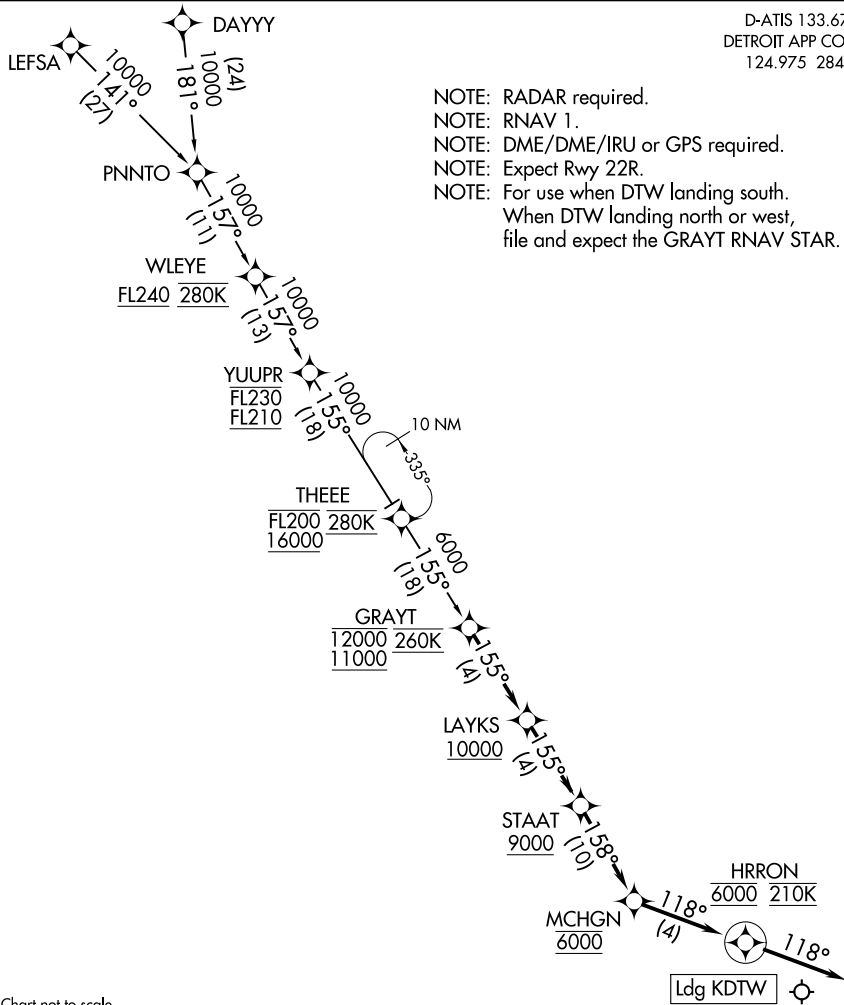
DETROIT METRO WAYNE COUNTY (DTW)

DETROIT, MICHIGAN

D-ATIS 133.675

DETROIT APP CON

124.975 284.0



NOTE: Chart not to scale.

## ARRIVAL ROUTE DESCRIPTION

DAYYY TRANSITION (DAYYY.LAYKS2)

LEFSA TRANSITION (LEFSA.LAYKS2)

From GRAYT on track 155° to cross LAYKS at or above 10000, then on track 155° to cross STAAT at or above 9000, then on track 158° to MCHGN at 6000, then on track 118° to cross HRRON at 6000 and at 210K, then on track 118°. Expect RADAR vectors to final approach course.

LOST COMMUNICATIONS: From HRRON, execute RNAV (GPS) Y RWY 22R or ILS Y RWY 22R approach.

# LAYKS TWO ARRIVAL (RNAV)

(GRAYT.LAYKS2) 100CT19

DETROIT, MICHIGAN

DETROIT METRO WAYNE COUNTY (DTW)

EC-1, 28 NOV 2024 to 26 DEC 2024

EC-1, 28 NOV 2024 to 26 DEC 2024