

# RNAV (GPS) PRM Y RWY 4L (CLOSE PARALLEL)

DETROIT METRO WAYNE COUNTY (DTW)

WAAS CH <b>82439</b> <b>W04A</b>	APP CRS <b>038°</b>	Rwy Idg TDZE <b>645</b> Apt Elev <b>645</b>	<b>10000</b>
--	------------------------	---	--------------

RNP APCH.

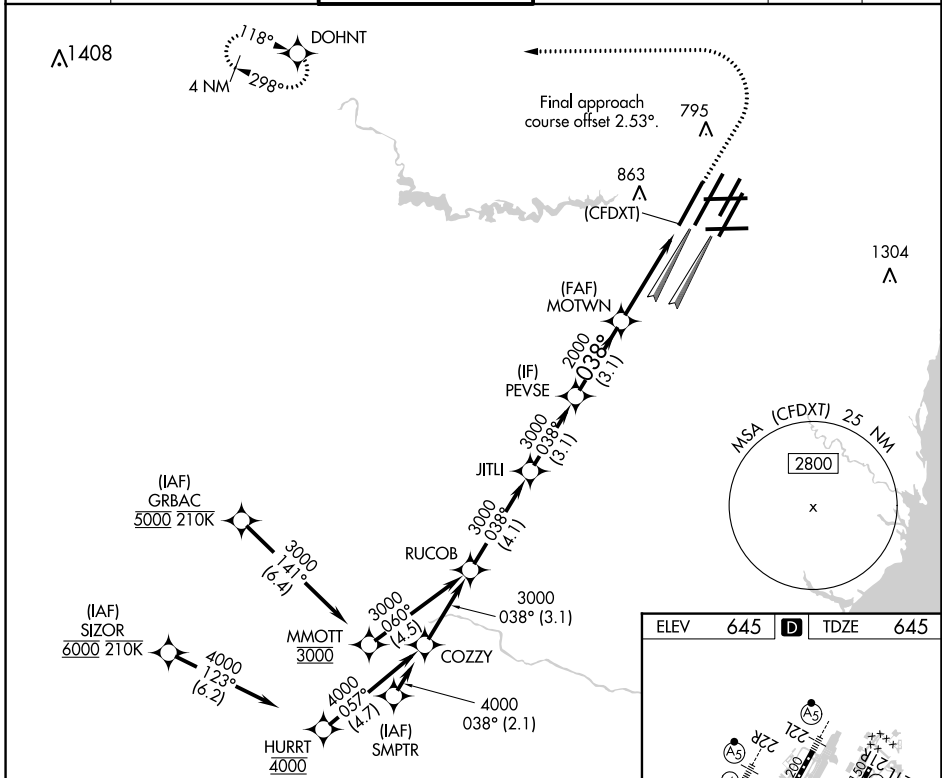
▼ Rwy 4L and 4R separated by 3000 feet centerline to centerline. For uncompensated Baro-VNAV systems, LNAV/VNAV NA below -19°C or above 54°C. Simultaneous approach authorized. Use of FD or AP required during simultaneous operations. Dual VHF comm required. See additional requirements on AAUP.

ALSF-2



MISSED APPROACH:  
Climb to 1100 then  
climbing left turn to 4000  
direct DOHNT and hold.

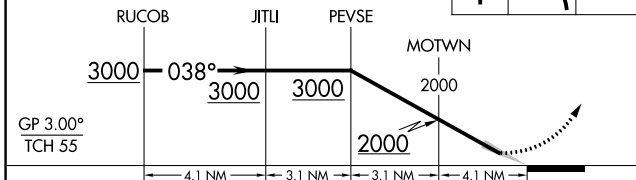
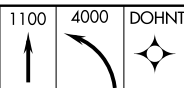
D-ATIS <b>133.675</b>	DETROIT APP CON <b>124.05 284.0</b>	METRO TOWER <b>135.0 317.725</b> <b>PRM 127.05</b>	GND CON <b>121.8 (NW) 119.45 (NE)</b> <b>132.725 (SW) 119.25 (SE)</b>	CLNC DEL <b>120.65</b>	CPDLC
--------------------------	--	--	---	---------------------------	-------



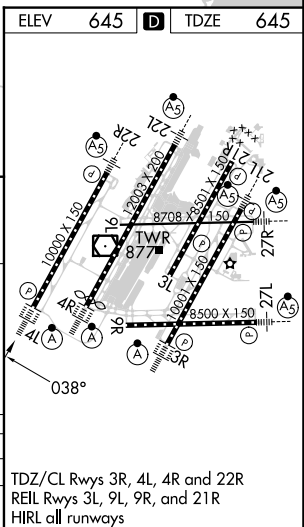
EC-1, 28 NOV 2024 to 26 DEC 2024

EC-1, 28 NOV 2024 to 26 DEC 2024

VGSI and RNAV glidepath not coincident  
(VGSI Angle 3.00/TCH 71).



CATEGORY	A	B	C	D
LPV DA		895/24	250 (300-½)	
LNAV/VNAV DA		1068/45	423 (500-¾)	



# RNAV (GPS) PRM Y RWY 4L (CLOSE PARALLEL)