

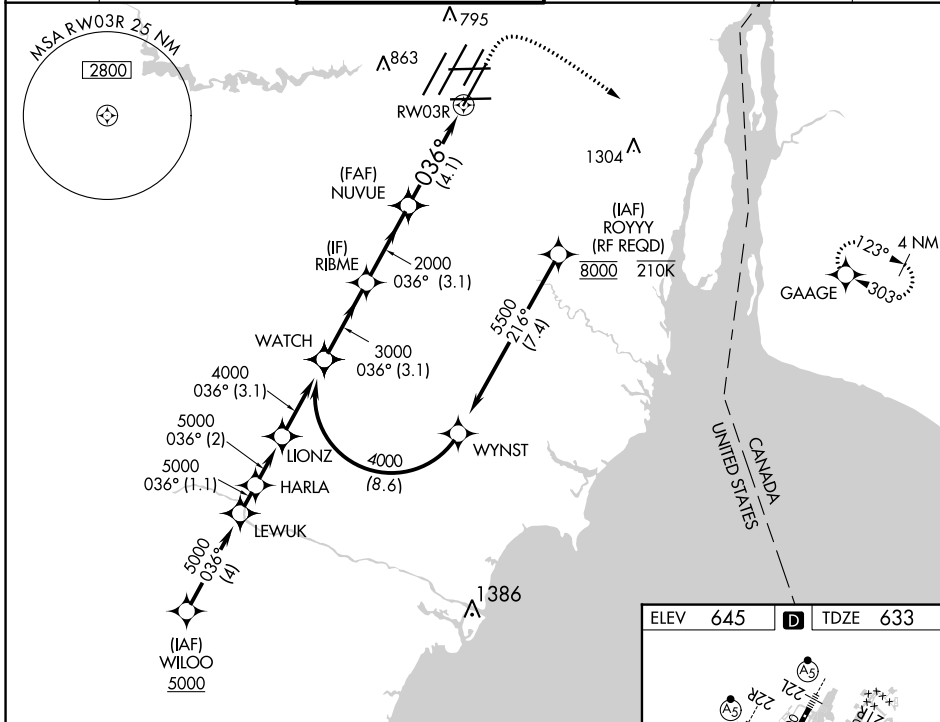
APP CRS	Rwy Idg	10001
036°	TDZE	633
	Apt Elev	645

RNAV (RNP) W RWY 3R

DETROIT METRO WAYNE COUNTY (DTW)

RNP AR APCH.		ALSF-2	MISSED APPROACH: Climb to 1100 then climbing right turn to 4000 direct GAAGE and hold.
<p>For uncompensated Baro-VNAV systems, procedure NA below -19°C (-2°F) or above 54°C (130°F). Simultaneous approach authorized.</p>			

D-ATIS	DETROIT APP CON	METRO TOWER	GND CON	CINC DEL	CPDLC
133.675	125.15 284.0	118.4 317.725	121.8 (NW) 119.45 (NE) 132.725 (SW) 119.25 (SE)	120.65	



EC-1, 28 NOV 2024 to 26 DEC 2024

EC-1, 28 NOV 2024 to 26 DEC 2024

VGSI and RNAV glidepath not coincident (VGSI Angle 3.00/TCH 70).

WATCH	RIBME	NUVUE	RWY 3R
4000	3000	2000	
GP 3.00° TCH 54			
3.1 NM		4.1 NM	
CATEGORY	A	B	C
RNP 0.30 DA	1021/35 388 (400-5%)		

AUTHORIZATION REQUIRED

