


APP CRS 216°	Rwy ldg TDZE Apt Elev	10000 642 645
------------------------	-----------------------------	--

RNAV (RNP) X RWY 22R

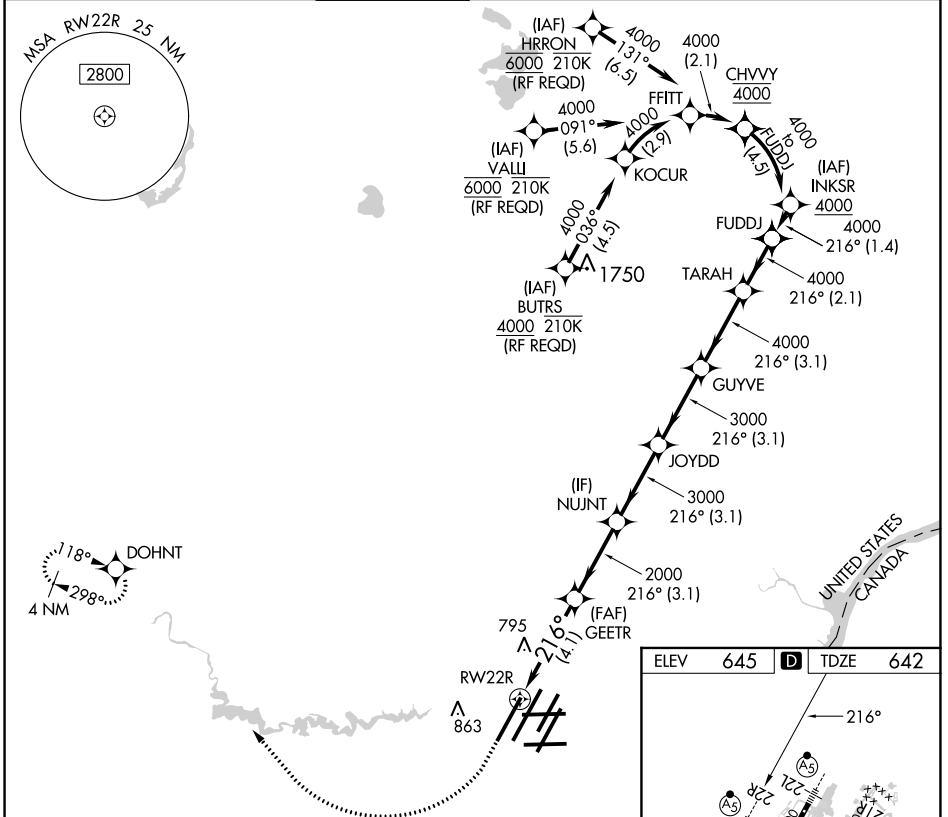
DETROIT METRO WAYNE COUNTY (DTW)




RNP AR APCH. MALSR 

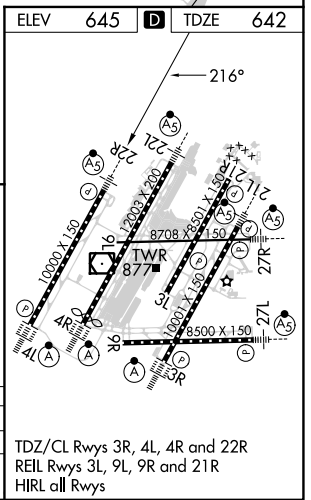
▼ For uncompensated Baro-VNAV systems, procedure NA below -19°C (-2°F) or above 54°C (130°F). Simultaneous approach authorized. For inop ALS, increase RNP 0.30 cll Cats visibility to RVR 5500.

MISSED APPROACH: Climb to 1100 then climbing right turn to 4000 direct DOHNT and hold.

D-ATIS 133.675	DETROIT APP CON 124.05 284.0	METRO TOWER 135.0 317.725	GND CON 121.8 (NW) 119.45 (NE) 132.725 (SW) 119.25 (SE)	CLNC DEL 120.65	CPDLC
--------------------------	--	-------------------------------------	---	---------------------------	-------



1100	4000	DOHNT	VGSi and RNAV glidepath not coincident (VGSi Angle 3.00/TCH 71).				
			GUYVE	TARA	FUDDJ		
RWY 22R			GEETR	NUJNT	JOYDD	216°	
			2000	3000	3000	4000	4000
			2000	3000	3000	4000	4000
			GP 3.00°	TCH 55			
			4.1 NM	3.1 NM	3.1 NM	3.1 NM	2.1 NM
CATEGORY	A		B		C		D
RNP 0.30 DA	987/30		345 (400-5%)				



AUTHORIZATION REQUIRED

TDZ/CL Rwy's 3R, 4L, 4R and 22R
REIL Rwy's 3L, 9L, 9R and 21R
HIRL all Rwy's

EC-1, 28 NOV 2024 to 26 DEC 2024

EC-1, 28 NOV 2024 to 26 DEC 2024