

WAAS CH <b>99601</b> <b>W22A</b>	APP CRS <b>216°</b>	Rwy Idg <b>12003</b> TDZE <b>637</b> Apt Elev <b>645</b>
--	------------------------	--

# RNAV (GPS) Z RWY 22L

DETROIT METRO WAYNE COUNTY (DTW)

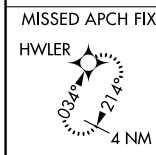
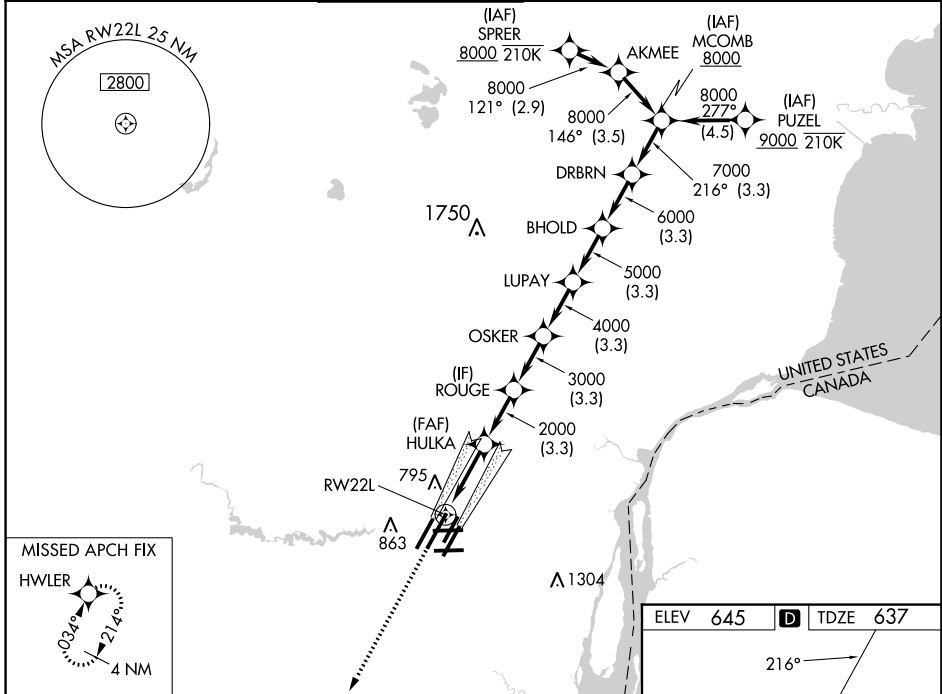
RNP APCH.

▼ For uncompensated Baro-VNAV systems, LNAV/VNAV NA below -10°C (14°F) or above 54°C (130°F). Simultaneous approach authorized. LNAV procedure NA during simultaneous operations. Use of FD or AP required during simultaneous operations. For inop ALS, increase LNAV/VNAV all Cats visibility to RVR 4500 and LNAV Cat C/D visibility to 1½ SM. #RVR 1800 authorized with use of FD or AP or HUD to DA.

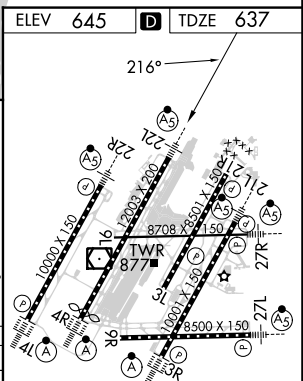


MISSED APPROACH:  
Climb to 4000 direct  
HWLER and hold.

D-ATIS <b>133.675</b>	DETROIT APP CON <b>124.05 284.0</b>	METRO TOWER <b>128.125 317.725</b>	GND CON <b>121.8 (NW) 119.45 (NE)</b> <b>132.725 (SW) 119.25 (SE)</b>	CLNC DEL <b>120.65</b>	CPDLC
--------------------------	--	---------------------------------------	---	---------------------------	-------



4000 HWLER							
*LNAV only.							
RW22L	HULKA	ROUGE	OSKER	LUPAY	BHOLD	DRBRN	MCOMB
1.3 NM	3 NM	3.3 NM	3.3 NM	3.3 NM	3.3 NM	3.3 NM	3.3 NM
2000	2000	3000	4000	5000	6000	7000	8000
216°							
GP 2.85°							
TCH 60'							
CATEGORY	3	A	B		C		D
LPV DA#	837/24 200 (200-½)						
LNAV/VNAV DA	938/24 301 (300-½)						
LNAV MDA	1100/24 463 (500-½)		1100/50 463 (500-¾)				
CIRCLING	1180-1 535 (600-1)		1180-1½ 535 (600-½)		1240-2 595 (600-2)		



TDZ/CL Rwys 3R, 4L, 4R and 22R  
REIL Rwys 3L, 9L, 9R and 21R  
HIRL all runways

EC-1, 28 NOV 2024 to 26 DEC 2024

EC-1, 28 NOV 2024 to 26 DEC 2024