

(TRMML4.TRMML) 24137

AL-119 (FAA)

DETROIT METRO WAYNE COUNTY (DTW)

# TRMML FOUR DEPARTURE (RNAV) Departure Routes

DETROIT, MICHIGAN

**TOP ALTITUDE:  
17000**



DETROIT DEP CON  
 125.525 284.0 (Rwys 22L/R, 27L/R)  
 132.025 284.0 (Rwys 3L/R, 4L/R, 21L/R)  
 D-ATIS 118.125  
 CLNC DEL 120.65  
 CPDLC  
 GND CON  
 121.8 (NW) 119.45 (NE)  
 132.725 (SW) 119.25 (SE)  
 METRO TOWER  
 118.4 317.725 (Rwys 3L/R, 21L/R, 27R)  
 128.75 317.725 (Rwy 27L)  
 135.0 317.725 (Rwys 4L/R, 22L/R)

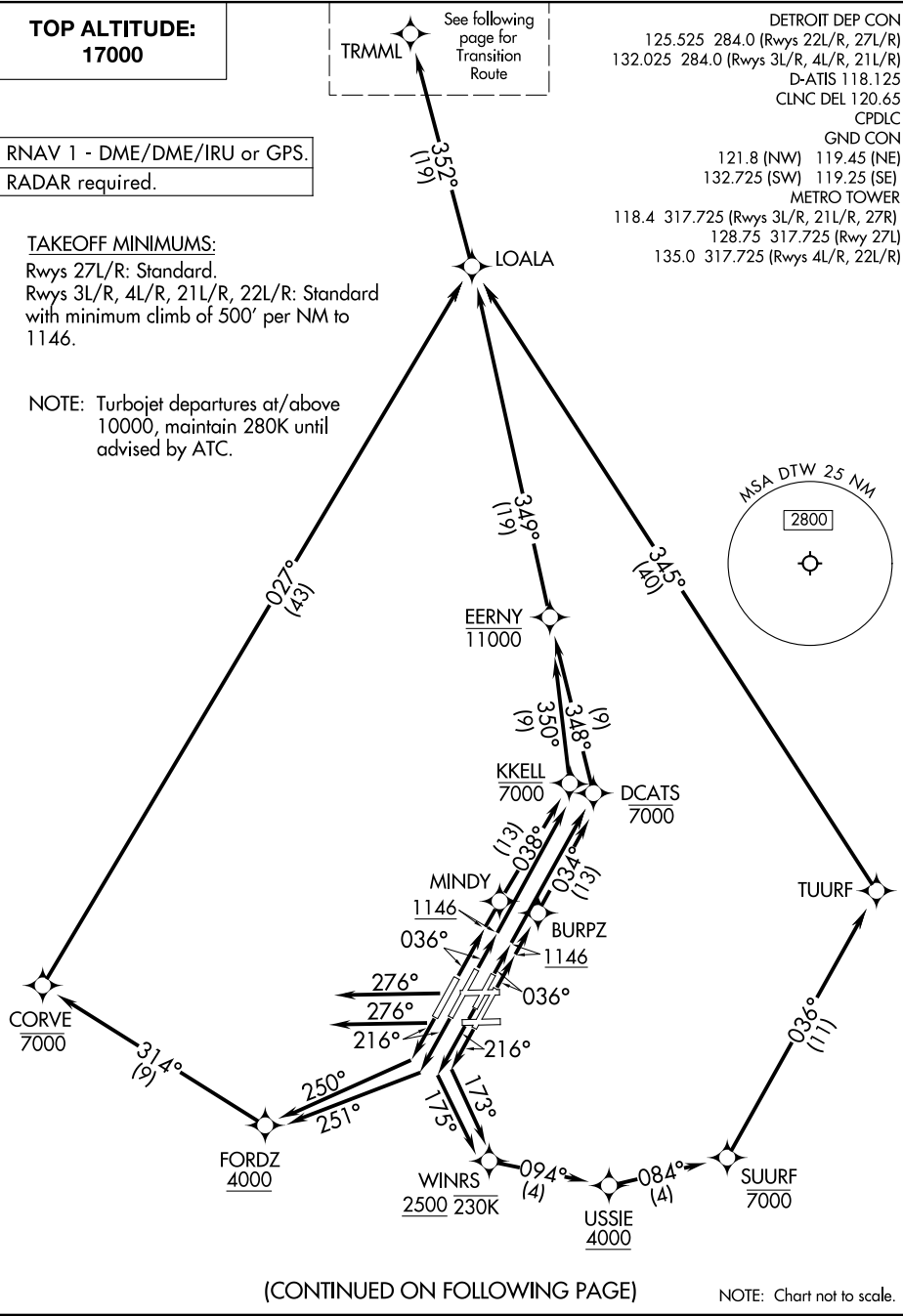
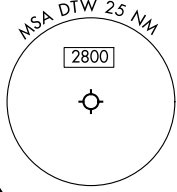
RNAV 1 - DME/DME/IRU or GPS.

RADAR required.

### TAKEOFF MINIMUMS:

Rwys 27L/R: Standard.  
 Rwys 3L/R, 4L/R, 21L/R, 22L/R: Standard  
 with minimum climb of 500' per NM to 1146.

NOTE: Turbojet departures at/above  
 10000, maintain 280K until  
 advised by ATC.



(CONTINUED ON FOLLOWING PAGE)

NOTE: Chart not to scale.

EC-1, 28 NOV 2024 to 26 DEC 2024

EC-1, 28 NOV 2024 to 26 DEC 2024

# TRMML FOUR DEPARTURE (RNAV) Departure Routes

DETROIT, MICHIGAN

(TRMML4.TRMML) 16MAY24

DETROIT METRO WAYNE COUNTY (DTW)